

In This Issue

Cliddesden art group	1	Village hall news and celebration	3
100 Club	1	Parish council pages	4
Service times at St. Leonard's Cliddesden	1	Film club	6
Coffee morning.....	1	CGHB patients group	7
Wine walk.....	2	Village directory	8

Cliddesden Art Group

The Cliddesden Art Group's exhibition is nearly upon us.

A NOTE for your diary; is the **16th & 17th August 2025**, to visit Cliddesden Village Hall.

Inside you will be delighted by the artwork being displayed, which will highlight the many accomplishments of this group. This is being held in conjunction with Hampshire Open Studios.

The exhibition will also be a tribute to Mary Thomas who guided the pencils and brushes of her numerous students over so many years. On the 16th there will also be a dedication to the garden in Mary's memory attended by her sons Alistair and Dominic.

The Village Hall will be open from 10.00am until 5.00pm both days. Refreshments will be available.

Pat Doel

100 Club



Hello members

The draw for July was called at the Coffee Morning held at the Hall on 14th July 2025. Here are the lucky winners:

1 st	Rosemary Mansbridge	123
2 nd	Alison Mosson	110
3 rd	Jean Forbes	89

Congratulations.

Next Coffee Morning **8th September** - come along for good cakes and company. (Coffee Morning cancelled for August).

Rose Beevers Tel: 475944
100club@cliddesdenhall.org.uk

SERVICE TIMES AT ST. LEONARD'S CLIDDESSEN

SUN 3 RD AUG	9.45AM	MORNING PRAYER
SUN 10 TH AUG	11.15AM	FAMILY COMMUNION
SUN 17 TH AUG	11.15AM	FAMILY SERVICE



Please note that due to village hall refurbishment it has been necessary to *cancel coffee morning in August*.

September 8 th
October 13 th
November 10 th
December 8 th

Please come along to have a natter and make new friends, browse the second-hand book stall, and of course enjoy a good cuppa and a slice of cake!

We meet on the second Monday morning of each month, from 10.30 – 12 noon.

We meet as usual in September, hope to see you then.

Gill (01256 359413)





As the second heatwave of the year threatened to give way to more traditional July weather in the UK, 3 host houses bravely continued their preparations for a fully subscribed, Italian-themed Wine Walk. The theme was loosely connected to the papal succession although, raising for local church funds, a general Italian theme was warmly embraced by all the hosts.

And so it was the 2025 Cliddesden Wine walk was underway. All the houses were beautifully decorated, offering a lovely selection of antipasto, Italian chicken salad and Lasagne plus trimmings, the event was warmly supported by all. We all met and shared time with a number of new and familiar faces (and were sorry to not see others) and the weather and flow of guests was kind to all. There was a little bit of tooting and froing of stock levels,

ably coordinated by Val and Robert's 'helpers' (grandchildren). The night ended slightly later than originally advertised but was artfully managed by the hosts. The final tally saw us netting £1,310 which was gratefully received by St Leonard's. Thank you to all those involved in making the event such a success and the kind notes from those that attended the evening.

Early days I know but if you'd consider being a host for one of these events then please do get in touch with John or Miche (07770 950111 or 07984 077555), we normally earmark the first or second weekend in July (4th or 11th July for 2026), it really is fun and this event really needs a variety of hosts as well as enthusiastic guests!

John Donaldson



Village Hall News

cliddesdenhall.org.uk

facebook.com/CliddesdenVillageHall



As advised in my earlier reports, the work to refurbish the Hall and Meeting room floor, as well as the upgrade of the Male and Female toilets is due to commence. To facilitate this, the Hall will close on from Monday 4th August. It will reopen to accommodate the Art Exhibition with doors opening between 9.00am to 5.00pm on Saturday 16th / Sunday 17th August.

To coincide with the Art Exhibition, a commemorative garden for Mary Thomas, who played such a key role in the village's Art Classes over the years, is to be opened. The garden is located adjacent to the hall's entrance and will be opened by Mary's sons, Dominic and Alistair at 2.00pm Saturday 16th August. All are welcome to attend.

Many of you may have noticed the mobile radio transmitter, which has been temporarily located in the car park since October. We have now been advised by Messrs. Bauer Media that it is to be removed. This

arrangement has been a very useful source of income to the Hall and has contributed to the cost of the works described above.

We are pleased to announce that a clearly marked refuse collection bin, for aluminium cans only, has been located at the rear of the building. Collection is made regularly with the proceeds going to the Hampshire and Isle Wight Air Ambulance; so please bring your old cans to us.

Finally, we have all been greatly saddened at the news of the passing of Bob Randall. He had recently joined the Hall's management committee and will be greatly missed. Our condolences go to his wife Lesley and family.

Leslie J. Smith, 19th July 2025
Hall Management Committee
www.cliddesdenhall.org.uk
facebook.com/CliddesdenVillageHall
LJChairVH@outlook.com



Save the Date!



Cliddesden Village Hall's 25th Birthday Celebration

Saturday 4th October 8.00pm

Band, dancing, bar, cake



Tickets & further details next month.....



PARISH PLANNING APPLICATIONS

25/01597/HSE (Validated 10 July)
Three Horseshoes, Woods Lane.
Replace render on exterior walls with render insulation system; remove chimney stack; replacement windows and doors, and to replace tarmac driveway with resin driveway.

25/01544/PIP (Validated 04 July)
Land South Of Woods. Application for Permission in Principle for the erection of up to four dwellings.

25/01476/OUT (Pending 13 June) Land West Of Millars, Station Road. Outline application for four dwellings with some matters reserved (appearance and landscaping).

25/01313/OUT (Pending 27 May) Land North of Bramble Bank. Farleigh Road. Outline application, with all matters reserved save for access, for up to 17 dwellings with access, parking, drainage works, open space, landscaping and associated infrastructure.

25/01215/PIP (Refuse 10 July) Land North of Woods. Application for Permission in Principle for the erection of four detached single dwellings and associated access

25/01198/HSE (Pending 14 May)
Crockley House, Farleigh Road.
Proposed rear extension to garage (part retrospective).

25/00808/HSE (Pending 31 March)
Netherfield, Farleigh Road. Re-construction of side extension, new external materials, new roof dormer, new car-port, widening driveway, alterations to doors, windows. Repairs to render, external redecoration and change colour of windows.

24/02778/FUL (Pending 03 December)
Land South Of Farleigh Road. Change of use of agricultural land to use for exercising of dogs, including perimeter fence, pathway, shelter, vehicle access and parking.

24/02689/RET (Pending 25 November)
Appleyard, Woods Lane. Variation of Condition 1 (plans) of 20/01098/FUL (four new dwellings with associated parking and access) to amend the approved width of the access road.

24/02430/RET (Grant 30 May)
1 Chapel Walk. Change of use from garage to ancillary accommodation and external works (retrospective).

Parish Council meeting for July rescheduled to Tuesday 29th.

The September meeting will be held on Tuesday 2nd.

Both at 7.30pm in the Village Hall meeting room, all welcome.

PARISH COUNCILLOR VACANCY

Cliddesden Parish Council is allocated five Parish Councillors and has one vacancy. If you wish to contribute to the community and care for the wellbeing of your local area, this could be the role for you.

Expressions of interest please to clerk.cliddesden@gmail.com, or please contact any of the parish councillors.

24/00617/RET (Pending 17 June)
1A Millars Cottages, Station Road. Revised parking arrangements and associated landscaping, ref 20/00390/FUL (retrospective).

PARISH TREE APPLICATION

T/00250/25/TPO (Refuse 25 June) The Black Barn. T1 Horse Chestnut – 15% canopy thin and localised reduction by up to 2m of SW aspect.

PLANNING APPLICATIONS FROM WINSLADE PARISH

25/01235/FUL (Validated 01 July) The Firs, Alton Road. Material Change of Use of Land to a use of Gypsy/Traveller site comprising two pitches with the siting of one Mobile Home, one Touring Caravan, and one Dayroom per pitch, and alteration of access onto the A339 (part Retrospective).

25/00200/LBC (Validated 06 Feb) and **25/00199/FUL** (Validated 28 May)
Hackwood Park. Conversion of Hackwood Park from residential use to hotel and ancillary hotel use, including conversion of Mansion House, erection of extension to west, two new basements to north and south and minor alterations. Conversion of Stable Block to hotel rooms. Erection of hotel bedroom buildings to north and south of Stable Block and Car Park and Energy Centre. Demolition of six non-listed structures and replace with 12 hotel lodges. Construction of satellite support building for BOH (Back of House) facilities, car parking and decked visitors' car park.

BASINGSTOKE & DEANE FOOD WASTE COLLECTIONS FROM OCTOBER 2025

From BDBC press release 10645 published 14 July

Basingstoke & Deane Borough Council and Hart District Council will introduce food waste collections week commencing Monday 06 October.

This is ahead of the Government's mandatory deadline of April 2026.

All households will be provided with:

- one grey indoor caddy
- a roll of liners
- an information leaflet to help use the service.

Households who have kerbside wheelie bin collections will also receive a green outdoor caddy.

When the new service starts, the food waste caddies are to be put out each week with other bins on the usual collection day.

All food items can be put out for recycling – fruit and vegetable peelings, meat and fish and bones and shells, tea bags, eggshells, pet food and all leftover food and plate scrapings – to become greener energy and fertiliser.

While the Borough / District Councils are responsible for waste collection, County are responsible for waste disposal and recycling.

GO-AHEAD FOR HAMPSHIRE-WIDE FOOD WASTE RECYCLING

www.hants.gov.uk/News/20250623Foodwasterecycling

Hampshire County Council has agreed to the food waste recycling, reference their 'Universal Services' Decision Day of 23 June:

'Plans to enable Hampshire residents to recycle household food waste from April 2026 have been confirmed.

'Hampshire County Council has agreed to progress with arrangements that will see an estimated 30,000 to 50,000 tonnes of food waste from Hampshire households recycled through anaerobic digestion – a process whereby bacteria breaks down organic matter to produce by-products such as renewable gas and organic fertilizer.'

[Noting the HCC notice says from April 2026.]

Shaping your future council

PLEASE COMPLETE THE 'FUTURE CHANGES TO NORTH HAMPSHIRE COUNCILS' SURVEY

www.basingstoke.gov.uk/future-councils

The survey is being run in partnership with Hart District Council and Rushmoor Borough Council, open to Sunday 17 August.

'We want to hear your views on the proposals we are working on that would see a new Unitary Council created for north Hampshire covering the areas of Basingstoke & Deane, Hart and Rushmoor area.'

'We want to know what's important to you about your local council and how you feel future local councils should operate.'



OUR SURVEY IS OPEN UNTIL SUNDAY 17 AUGUST



LOCAL GOVERNMENT REORGANISATION SHAPING YOUR FUTURE COUNCIL

As you will know, Government wants to replace the current 15 councils in Hampshire and the Isle of Wight with new, larger, unitary councils that provide all services in each area.

Each council has been asked to submit a single preferred proposal to Government, by 26 September, for new unitary councils. These would take over from the existing councils in April 2028.

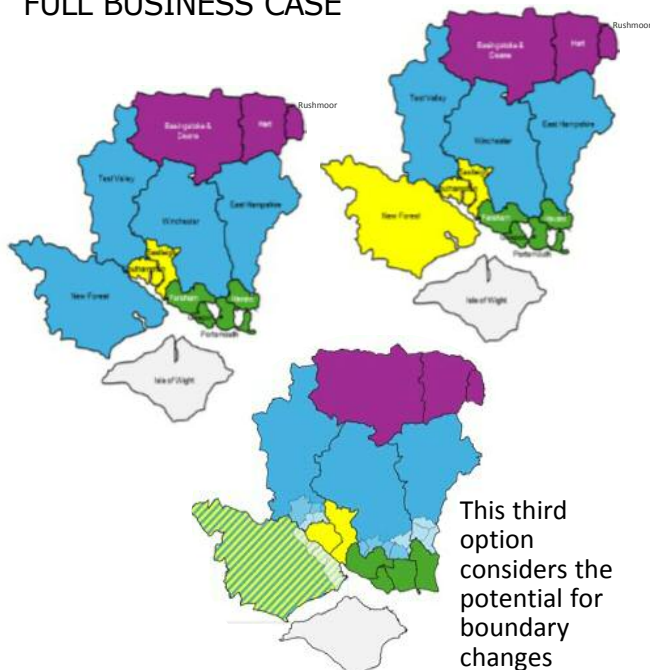
Following in-depth assessments, 12 councils are working together and believe creating four unitary councils for mainland Hampshire would best meet the Government's criteria.

Three variations of this option are being considered, but all include a 'Northern Unitary' comprising Basingstoke & Deane, Hart and Rushmoor.

PLEASE COMPLETE THE SURVEY
Most questions focus on the local area, though with some asking for thoughts on the wider proposals for all 'Hampshire & the Solent'. You can answer as few or as many questions as concisely or as broadly as you wish.

OPTIONS FOR A FOUR-MAINLAND UNITARY SOLUTION

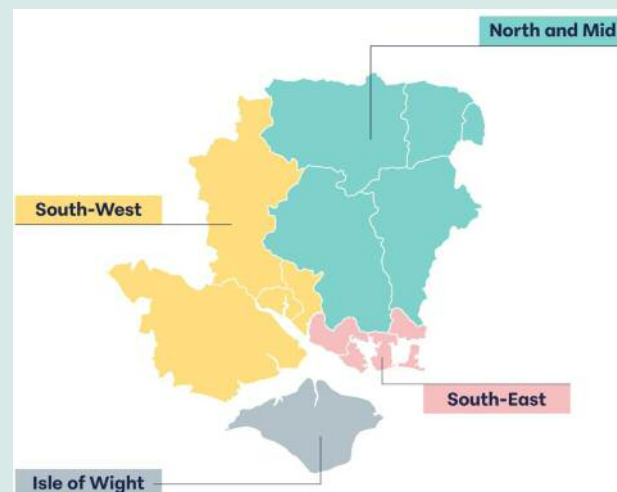
FINAL SHORTLIST AGREED BY MAJORITY (12 COUNCILS) TO BE WORKED INTO FULL BUSINESS CASE



THE PROPOSAL FROM COUNTY COUNCIL AND EAST HANTS DISTRICT COUNCIL IS FOR THREE MAINLAND UNITARIES

This would see a much larger 'North and Mid' Unitary Council comprising BDBC, Hart, Rushmoor, Winchester and East Hants.

Please respond to this consultation at www.hants.gov.uk/lgr also open to 17 August.



Social and Entertainment Club

Cliddesden Millennium Village Hall

'You'll be sure of a warm welcome and a great evening'

The bar opens at 7.30pm and we start at 8pm. There is an intermission half way through during which refreshments and drinks at the bar are available at very low prices.

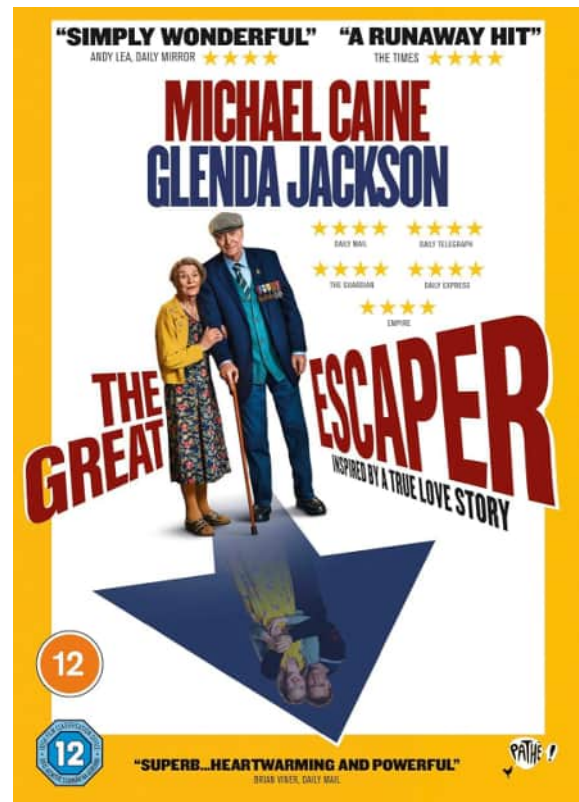
Admission is only £2 per person. Please note we work on a cash only basis.



Thursday 31st July
Moulin Rouge
 2001, 122 minutes
 Certificate 12

Christian, an English writer, travels to Paris to join the Bohemian revolution. He visits the city's biggest nightclub, Moulin Rouge, and falls in love with its star performer and courtesan, Satine.

Starring Nicole Kidman, Natalie Mendoza, Ewan McGregor, Richard Roxburgh, John Leguizamo and Jim Broadbent.



Thursday 4th September
The Great Escaper
 2023, 92 minutes
 Certificate 12

In the summer of 2014, Bernard Jordan (Michael Caine) made global headlines. He had staged a 'great escape' from his care home to join fellow war veterans on a beach in Normandy, commemorating their fallen comrades at the D-Day Landings 70th anniversary. It is a story that captured the imagination of the world as Bernie embodied the defiant, "can-do" spirit of a generation that was fast disappearing. But, of course, it wasn't the whole story. It was an inspirational but sanitised retelling of one man's need to come to terms with the lasting trauma of war.

Starring Michael Caine, Glenda Jackson, John Standing, Laura Marcus, Jackie Clune and Wolf Kahler

Please note we work on a cash only basis.

Everybody welcome from wherever you live. We hope to see you there.

Diane Rampton
dianerampton@btinternet.com



www.cghppg.weebly.com

hosts the in depth patient news with direct links and there is a 'Self Help A-Z' of Health and Wellbeing information, fast track treatment options, support groups and local contacts. Citizens Advice **0808 278 7829** can access the A-Z if you cannot use the internet.

PPG email: cghb.surgeryppg@btinternet.com
Facebook Page www.facebook.com/CGHB.PPG

Membership of the Patient Participation Group is open to all patients of the practice. If you are interested in joining find out more and apply online www.cghppg.weebly.com/join-the-ppg

Practice complaints process is on the practice website or write to The Manager at Gillies Health Centre or email: hiowicb-hsi.cghpartnership.complaints@nhs.net

July 2025 News.

Phone, Continuity of Care and Triage improvements.

The practice is actively assessing the impact of team and call answering changes made and plan to adjust these as needed. They report patients calling the practice wait on average 16 minutes down from 46 minutes and opening hours for online requests through DriQ powered by Evergreen have greatly improved. We would like to thank the Reception and Management teams who have worked very hard to transform the contact processes

Changes are being made to the triage and routing system to further improve appointment availability.

As a part of the process Reception staff have been trained to ask questions to ensure patients receive

- the most appropriate medical care
- from the most appropriate health professional
- at the most appropriate time
- or suggest other appropriate community services

Care Quality Commission Inspection.

The recent inspection report has been published. Overall the practice rating remains good but improvement was required for 'responsiveness'. We wait to hear how this will be addressed by the practice. The report can be viewed online. <https://www.cqc.org.uk/location/1-10472984618/reports/AP8468/overall>

Patients aged 25 to 64 years can have a Cervical screening test once every 5 years. They are invited to an appointment, or can request one if they forgot or lost the invited At our Practice, Cervical Screening is available by requesting a nurses appointment, by phone, in person at reception or you can request an appointment using the Dr IQ Evergreen App 'Book Nurses appointment' link.

***** NHS 10 YEAR PLAN PUBLISHED JULY 25 *****

3 big shifts to get the NHS back on its feet and to make it fit for the future are:

From hospital to community - transforming health-care with easier GP appointments, extended neighbourhood health centres, better dental care, quicker specialist referrals, convenient prescriptions, and round-the-clock mental health support – all designed to bring quality care closer to home.

From analogue to digital - creating a seamless healthcare experience through digital innovation, with a unified patient record eliminating repetition, AI-enhanced doctor services and specialist self-referrals via the NHS app, a digital red book for children's health information, and online booking that ensures equitable NHS access nationwide.

From sickness to prevention - shifting to preventative healthcare by making healthy choices easier – offering new weight loss services & introducing home screening kits.

Lung Cancer Screening is available to people aged between 55 and 74 who have ever smoked.

If your GP records show you are a current or former smoker you will be invited for screening. If you have symptoms of lung cancer you must contact your GP directly. If you think you have been missed or forgot to tell the practice you've smoked, contact the screening team. Email: lcs@hhft.nhs.uk. Phone 0800 098 2945

Carers Support On 24th June about 50 carers took the opportunity to receive 1-2-1 support relevant to their personal needs. Carers could also make a playlist of meaningful music to help people living with Dementia, and discuss Health, with particular focus on falls prevention, hydration and continence, and Cancer screening. Support was provided by practice staff, volunteers, and Princess Royal Trust For Carers. Dr Glew (cancer lead) dropped in during her lunch break. It became apparent carers would benefit from greater opportunities to chat together regularly and specific information on local support for Down's Syndrome Carers was sought. Subsequently we found this information and added it to the online version of this news sheet. Carers can view support guidance online at www.cghppg.weebly.com/carers-advice or visit the **next Drop in at St Andrews Surgery 10am to 2 pm Tuesday 9th September 2025.**

Basingstoke Area Stroke Support (BASS) Need more Volunteers.

The group meet on Wednesdays 2-4pm, at Hill Rise Hall, Brighton Hill, Basingstoke and anyone interested in volunteering could just drop in.

Phone Jo Vockins Phone 07429 620459

Email BasingstokeSAVG@stroke.org.uk

Paydens Pharmacy at Brighton Hill is under new ownership and using a new app

The pharmacy will be called Medhill Pharmacy. The Paydens' Healthera app, is no longer active, using it could delay your prescriptions. Medhill Pharmacy and Brighton Hill Pharmacy will move to a new system for ordering medications online, using 'PharmAppy'. How to download the app is on the online version of this news sheet at www.cghppg.weebly.com/news

VILLAGE DIRECTORY

POLICE	PCSO Andy Jones (Basingstoke Rural South) <i>andrew.jones.13301@hampshire.pnn.police.uk</i>	07775 542 021
NEIGHBOURHOOD WATCH	Simon Barker <i>sibarksy@hotmail.com</i>	07732 100 990
PARISH COUNCIL	<i>www.cliddesdenparishcouncil.info</i> Susan Turner (clerk) <i>clerk.cliddesden@gmail.com</i> Alan Tyler (chairman) <i>alanbtyler19@btinternet.com</i> Mark Gifford <i>m.gifford1@outlook.com</i> Alison Mosson <i>alison@abe.co.uk</i> Dave Rudge <i>hugh.rudge@gmail.com</i>	07515 777 060 460 425 07504 104 621 07721 046 146 07813 070 261
TREE WARDEN	Alison Mosson <i>alison@abe.co.uk</i>	07721 046 146
WARD COUNCILLORS	Onnalee Cubitt <i>cllr.onnalee.cubitt@basingstoke.gov.uk</i> Kate Tuck <i>cllr.kate.tuck@basingstoke.gov.uk</i> Sheena Grassi <i>cllr.sheena.grassi@basingstoke.gov.uk</i>	07762 067 411 07762 067 411 07561 060 596
COUNTY COUNCILLOR MEMBER OF PARLIAMENT	Juliet Henderson <i>juliet.henderson@hants.gov.uk</i> Alex Brewer MP <i>alex.brewer.mp@parliament.uk</i> House of Commons, London SW1 AOM	07738 289 849
MILLENNIUM VILLAGE HALL	<i>www.cliddesdenhall.org.uk</i> Leslie Smith (Chairman) 3 rd alarm contact Angie Fewster (Vice Chair) 2 nd alarm contact Ken Rampton (Caretaker) 1 st contact if alarm goes off Pat Rampton (Lettings Secretary) <i>bookings@cliddesdenhall.org.uk</i> Jo Capehorn (Secretary) Julie James (Treasurer)	07973 922 560 475 848 461 034 461 034 07528 856 157 363 753
NEIGHBOURHOOD PLAN	<i>www.cliddesdennp.wixsite.com/cliddesdennp</i>	
CLIDDESSEN COMMUNITY CONSERVATION GROUP	<i>cliddesdenconservation.org</i> Alison Mosson (Chairman) <i>alison@abe.co.uk</i> Angie Fewster (Secretary) <i>angie@fewster.me.uk</i>	07721 046 146 475 848
JOLLY FARMER	<i>thejollyfarmercliddesden.co.uk</i> <i>theJollythai@gmail.com</i>	358 288
CLIDDESSEN PRIMARY SCHOOL	<i>www.cliddesden.hants.sch.uk</i> Kenneth Davies (Headteacher)	321 571
BROWNIES	Sian Banks	333 151
FARLEIGH PLAYGROUP	Claire Nunn Melanie Gill	477 197 07833 528 040
ST LEONARD'S DISTRICT CHURCH COUNCIL	<i>www.farleighcandoverandwield.org.uk</i> Rectory: Vacancy Peter Raine (Church Warden) <i>peter.c.w.raine@btinternet.com</i> Val Gofton-Salmond Julian Nunn	381 221 474 425 477 197
FILM CLUB	Diane Rampton <i>dianerampton@btinternet.com</i>	467 533
HORTICULTURAL SOCIETY	<i>www.ellisfield.org.uk/hortsoc.html</i> Marilyn Smith	462 584
WOMEN'S INSTITUTE	Janet Fagg (President) <i>jkfagg@gmail.com</i> Pat Rampton (Vice President) Julia Ross (Secretary) <i>cliddesdenssec@hampshirewi.org.uk</i>	461 034
CLIDDESSEN & FARLEIGH WALLOP EDUCATIONAL TRUST	Vicky Tibble (Secretary & Treasurer) <i>Vicky.tibble@outlook.com</i> By text to: <i>admin@portsmouthstates.co.uk</i>	07552 927 692
AGE CONCERN	The Orchard, White Hart Lane, Basingstoke RG21 4AF <i>reception@ageconcernbasingstoke.freemove.co.uk</i>	423 874
B/STOKE ASTRONOMICAL SOC	<i>www.basingstokeas.org.uk</i>	
HILL & DALE	Jean Frost (Editor) <i>hillanddaleeditor@gmail.com</i> Ben Maunder (Distributor)	327 859
VILLAGE ARCHIVE	<i>www.cliddesden-archive.uk</i> David Brown <i>dave@cliddesden-archive.uk</i>	
VILLAGE NEWSLETTER	Editor: David Brown Copy date 20th preceding month to: <i>bootofthedailybeast@gmail.com</i>	
CLIDDESSEN CHAT	<i>www.facebook.com/groups/cliddesdenchat</i>	