

In This Issue

100 Club	1
Wine walk.....	1
Coffee morning.....	1
Film club	2
Horticultural society	3
The Cliddesden Players	4
Heritage open days 2025.....	4
The Women's Institute	5
Cliddesden art group	5
Air Ambulance.....	5
Parish council pages	6
Cliddesden primary school	8
Primary school summer fête	10
St Leonard's Noah's Ark.....	10
Farleigh parish playgroup	10
Children's singing group	10
CGHB patients group	10
Village directory	11

100 Club



Hello members

The draw for June was called at the Farleigh Parish Playgroup meeting on 13th June 2025. Here are the lucky winners:

1 st	Carol Hawkins	7
2 nd	Marilyn Smith	188
3 rd	Liz & Brian Karley	292

Congratulations.

Next Coffee Morning 14th July, come along for good coffee, cakes and company.

Rose Beevers Tel: 475944
100club@cliddesdenhall.org.uk

ST LEONARD'S CLIDDESSEN:



WALK



5th July 2025



IN RECOGNITION OF ALL THINGS ITALIAN
WITH WELCOMING HOSTS ACROSS THE
VILLAGE
FROM 7.30 PM UNTIL LATE (12ish)

Tickets £12 each available from:



Miche Donaldson	475721
Nicki Barnes	07889 236175
Ben Maunder	327859



Cash event in aid of church funds



July 14th

September 8th

October 13th

November 10th

December 8th

Please come along to have a natter and make new friends, browse the second-hand book stall, and of course enjoy a good cuppa and a slice of cake!

The 100 club is also drawn here each month.

We have table tennis available and all the equipment you will need if you fancy a game.

We meet on the second Monday morning of each month, from 10.30 – 12 noon.

Hope to see you there, all ages are welcome.

Gill (01256 359413)



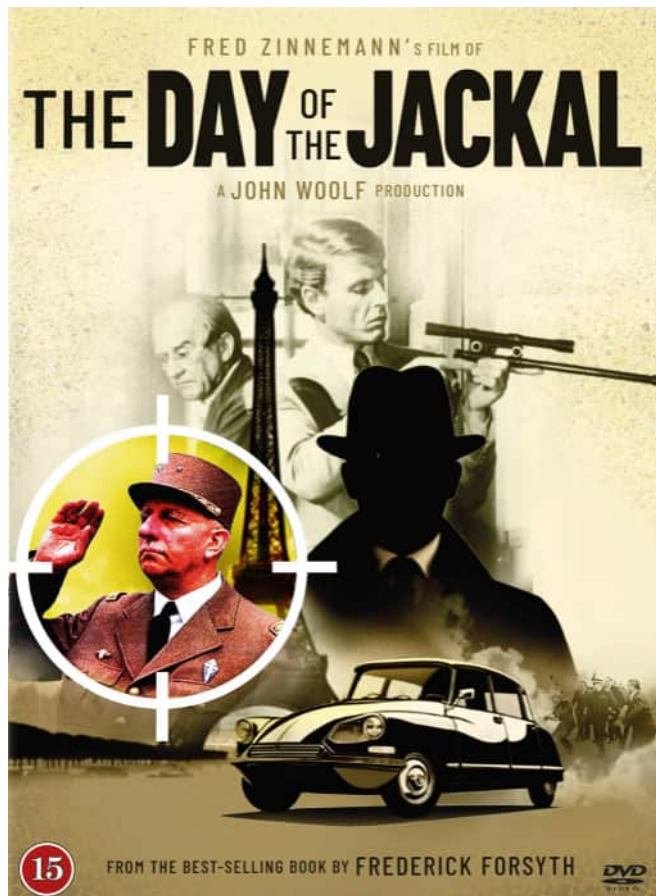
Social and Entertainment Club

Cliddesden Millennium Village Hall

'You'll be sure of a warm welcome and a great evening'

The bar opens at 7.30pm and we start at 8pm. There is an intermission half way through during which refreshments and drinks at the bar are available at very low prices.

Admission is only £2 per person. Please note we work on a cash only basis.



Thursday 3rd July
The Day Of The Jackal
 1973, 137 minutes
 Certificate 15

Based on a Frederick Forsyth best selling novel it tells the story of the plot to kill General Charles de Gaulle by a British assassin hired by the French OAS.

Starring Edward Fox, Michael Lonsdale,
 Olga George-Picot, Delphine Seyrig,
 Adien Cayla-Legrand and Michael Auclair.



Thursday August
Moulin Rouge
 2001, 122 minutes
 Certificate 12

Christian, an English writer, travels to Paris to join the Bohemian revolution. He visits the city's biggest nightclub, Moulin Rouge, and falls in love with its star performer and courtesan, Satine.

Starring Nicole Kidman, Natalie Mendoza,
 Ewan McGregor, Richard Roxburgh,
 John Leguizamo and Jim Broadbent.

Please note we work on a cash only basis.

Everybody welcome from wherever you live. We hope to see you there.

Diane Rampton
dianerampton@btinternet.com

Cliddesden, Farleigh Wallop & Ellisfield Horticultural Society

The three villages Gardening Club

Chairman: Seumas Foster tel: 07768443658 email: seumas@cropfosters.co.uk
 Secretary: Marilyn Smith tel: 462584 email: willow.ms@btinternet.com



Summer is here

At last, gardens, allotments and window boxes are very floriferous, and there is so much more to come even though rain has been a rare event for most of the spring. In May I recorded 15.5mm of rain, of which 10.5mm fell over two days at the end of the month. This is only about a third of the usual May totals. Recent rainfall in early June has been very helpful, and the water butts are briefly full again. Wildflowers are going well too, and the sight of the hawthorn in full flower this year was splendid.

Trees for the Garden

We had a very interesting talk at the end of May from Arboriculturalist Mark Hinsley, covering far more ground than we had expected. The Ginkgo tree was a favourite, with a history that makes it a fascinating tree to have in your garden.

Our next talk will be **Dry Gardening and Herbs, with Lynn Dupont** which will be on July 10th at the Cliddesden Memorial Hall from 7.30pm. Watch out for more information and reminders later.

The big event on the horizon is the **Summer Show on Sunday 3rd August** Schedules are available from Secretary Marilyn Smith, or any other committee member.

Staging is from 9.20 to 10.40 after which the Hall is closed to visitors for judging to take place and opens again at 2.00pm for viewing with presentations at 3.30pm.

We have made a few changes, and exhibitors can now show a single dahlia or gladiolus bloom in new classes, as well as the previous classes which needed 3 blooms. So often on the day you can find one stunning bloom, but not three, so here is a new class so you don't have to miss out.

This will be the second year of the Digital **photo classes**, the print classes will still be running, so check the topics in the Schedule.

We would love to see entries in the **children's classes**, which are the only ones to have cash prizes(!). Last year the **flower arranging classes** were spectacular so we hope the progress will continue this year.

In Mid June 18 of us visited the Japanese garden that has been created by Graham Bowyer and his family in Fleet. Although we had quite a lot of rain in the morning at home, our visit was in sunshine. We had a wonderfully stimulating visit and it was so interesting to see the symbolism and form of what has been created, tea and cake as well of course. Proceeds went to the Phyllis Tuckwell Hospice.

Seumas Foster



June visit to the Japanese garden that Gordon Bowyer has created at his home in Fleet

‘Dirty Business’ by Emily Golborn



The Cliddesden Players' summer production was another great comedy written by our very own Em, who also directed.

We had excellent audiences over the weekend of 13th & 14th June who laughed, drank, ate and chatted with friends and neighbours in the glorious sunshine.

Many thanks to Les & Sarina Smith and their wonderful BBQ crew for another delicious BBQ on the Saturday night.

Thanks to all the helpers – on refreshments, the bar, Door & first aid – we couldn't put on our productions without you. And thanks to the backstage crew for all the special effects, sounds & music, costumes and props which add so much to the plot.

Our talented bunch of actors brought all the characters to life as Richard's stag do ended with him in a laundrette having to dry clean his wedding suit after being thrown in the Thames! That day was certainly full of surprises, revelations and terror for everyone as the accidents piled up amid the realisation that an assassin was in the building! But it all ended happily with a blossoming love affair, a resolved family quarrel, and a groom finally coming to his senses and realising that his

bride-to-be was not for him!

As well as being such a wonderful occasion to bring the community together, we fund raise towards the maintenance of the Village Hall and made a superb profit of £2,293.25.

So many thanks to those who supported us!

Best wishes

The Cliddesden Players

Heritage Open Days 2025

Heritage Open Days (HODs) is an annual event that allows visitors free access to heritage sites that are not normally open to the public or would normally charge an entrance fee. One such local site is Farleigh House, Farleigh Wallop.



Visitors will be able to tour parts of the House viewing many works of art, furniture and silverware.

Tour days are Tuesday 16th & Thursday 17th September.

Booking, which is preferred, opens on 1st August and closes on 7th August. Full details of how to book and other heritage sites open can be found at:

www.heritageopendays.org.uk

Rose Beevers





CLIDDESSEN

Hello, my name is Caroline and I am taking over the job of writing our monthly reports to help Julia out.

Sadly my first report has to include the funeral of our friend and longest serving member Doreen Isley. It was a lovely sunny day, with only standing room left, as many of her family and friends filled St Leonard's church. The service was lovely. Emma, her granddaughter did a brilliant job, reading a beautiful eulogy of Doreen's life. I know Doreen would have been so proud of her, Michelle and Trevor.

God bless Doreen, we will all miss you.

Our speaker this time was Alan Jones who entertained us with Tales of a Roving BBC reporter. Alan started by apologising for turning up too early, saying he thought we were a very posh WI to have tables laid out with tablecloths and flowers! He asked where he should go to set up, only to be told he was a week too early and had sadly arrived when Doreen's family were setting up for the wake. We all said she would have found that to be very funny.

For his first job at the BBC Alan was told he was better suited to radio than tv and it wasn't until many years later, when he moved to the New Forest, he was offered the position of roving tv reporter based at their Southampton studios. Alan completed more than 24,000 interviews over his 20+ year career. Everyone found Alan to be very entertaining with his many interesting stories, some of which were funny, but also at times sobering.

Our next meeting will be Monday 21st July at 10.30am where we will be Jewellery making with Susan Waldon. Please note there will be an extra £2 charge for materials.

Caroline Poulter

Cliddesden Art Group

Cliddesden Art Group will be holding an art exhibition on the 16 & 17 August 2025, in Cliddesden Village Hall. This will be in conjunction with the Hampshire Open Studios.

The varied artwork being displayed will highlight the many accomplishments of the group members.

This is also a tribute to Mary Thomas who guided the pencils and brushes of her numerous students over so many years. One of Mary's talents was to nurture and encourage even the most timid of students, to achieve the many aspects of artwork, that some never thought possible.

The Village Hall will be open from 9.00am until 5.00pm both days. Refreshments will be available.

The meeting room will hold a memorial, together with the garden by the front door of the hall, dedicated to the memory of Mary.

Pat Doel.



**HAMPSHIRE AND
ISLE OF WIGHT
AIR AMBULANCE**

**SAVE YOUR ALUMINIUM CANS TO SUPPORT THE
AIR AMBULANCE!**



There is now a wheelie bin sited at **Cliddesden Village Hall** (at the back of the kitchen) for you to deposit crushed aluminium cans. Even if the barrier is down there is foot access, so available anytime!

Please do not put tin cans or any other recycling in the bin!

Every can helps and, as a result of all those cans, the network of collection sites that we are working with raised £1,774.00 last month, a great contribution to The Air Ambulance! Every month your cans help to keeping the Air Ambulance going, so thank you for your efforts.



Angie Fewster



THE NEXT PARISH COUNCIL MEETING
has been rescheduled to
TUESDAY 29 JULY 7.30pm, Village Hall
meeting room, everyone welcome

NOTES FROM THE 2025 PARISH ASSEMBLY

Present Parish Council; BDBC Council Leader Cllr Paul Harvey, Ward Cllrs Onnalee Cubitt, Kate Tuck, Sheena Grassi; Members of the Public c75 including from neighbouring Parishes. PCSO Andy Jones called in to report.

Address from BDBC Council Leader, Cllr Paul Harvey

Cllr Harvey opened by referring back to last December and three 'Christmas presents' received from Government:

- The new Dec 2024 NPPF which moved all the goalposts
- the Devolution White Paper
- a requirement for Local Government Reorganisation.

1. Devolution we knew was coming; it was in the Government's manifesto. We will be voting for the Mayor for Hampshire in May next year.

Mayoral powers will include strategic responsibility for transport – over the road, bus, and train networks – all emergency service, the PCC role; also strategic powers over planning. A real concern that housing need from one area may be moved to another, and no signs of what environmental protection there will be.

2. The new National Planning Policy Framework. As we discussed here last year, BDBC had a Reg 18 Draft Local Plan in place; fully consulted on, which identified sites for 700 houses per year over the first five years of the Plan. Preparation was well underway for the final Reg 19 Draft for submission to Government.

However the NPPF's new housing numbers made it impossible to carry on under Government's 'transitional arrangements'. The only way forward was to issue a call for more sites.

The borough has to find 6K more homes on top of those previously allocated. The level of uplift to the numbers is shocking. But if we don't provide for these numbers Central Government will take our planning powers away; this has been made clear in other parts of the country. Better to try to meet the numbers and have some form of control.

Biggest problem is infrastructure provision. Yet another letter sent to Government saying: 'You cannot expect us to provide housing if no

hospitals, no water or means of sewage disposal, and no power.' Power networks are incapable of more supply without investment. Little hope of changing things, but that's not stopping us putting the arguments forward.

Our borough's demographic growth is roughly 700 per year. Previous Government's standard method figure was 828dpa. Now the algorithm on affordability makes it 1,150 per year; and will only go up. Have to find at least 21K new homes. And BDBC no-longer has the land supply to support its housing policies.

The previous [Michael Gove] NPPF of December 2023 made provision for a four years' land supply requirement for Parishes at Reg 18 stage of their new Local Plan; and on 828 dwellings per annum we could show that four-year supply. This most recent NPPF took the four-year provision away and in increasing the housing figure made the requirement now for five years' supply impossible to achieve. The only thing on the horizon that will protect us from 'Planning by Appeal' is to have a new Local Plan in place – scheduled for adoption (Reg 26) in Winter 2027.

Until then, planning decisions are based on the current Local Plan Policy Framework adopted in 2016; these policies outdated, not meeting the standards written into the new Draft Policies. A disaster for our town; plus all the hard work put in to getting a Spatial Strategy in place without destroying the countryside has come to nothing.

This is not localism; it is top down requirement from Government. To not comply is unlawful. Working towards a new Local Plan and Policy Framework – however unpalatable – is the best we can do. Those who have gone to the Inspector with rushed through adaptations of plans-in-progress haven't been accepted – and left them even further behind in beginning a new process.

Must be clear there are no 'exceptional circumstances'. While many in Basingstoke might think of plenty – there are none that would be accepted by Government.

Bob Randall With great sadness the Parish Council records the death of Parish Councillor Bob Randall on 15th June. Our thoughts with and deepest condolences to his wife and family.

From Ward Councillors

COUNCILLOR COMMUNITY GRANTS SCHEME

As your elected Borough Councillors we have small pots of money, from £250 to £2,000 (up to a maximum of £3,000 if we pool our allocation), to award to local community groups or charities in our Ward of Basing and Upton Grey. These awards are governed by strict criteria clearly detailed in this link www.basingstoke.gov.uk/cllr-community-grants

We would love to hear from you if your group or charity is interested in seeking a small grant.

By no later than Sunday 28th September please email to cllr.kate.tuck@basingstoke.gov.uk with a brief outline of how much grant you are seeking and your reasons to be selected as one of the groups chosen for our support.

This email is requested prior to your submitting any formal application. We shall then collectively assess the brief outlines received. Sadly, not every application will be successful.

We look forward to hearing from you and your group and to learning about your deserving causes and the benefits such a grant would provide to our community.

Cllr Onnalee Cubitt, Cllr Sheena Grassi and Cllr Kate Tuck

3. Local Government Reorganisation

In three years' time all local councils in Hampshire will cease to exist. A new structure of Unitary councils will combine all council services. Final proposals to Government have to be submitted by 26 September.

It is so critical for the economic base to work. The major economic centres of Hampshire are Portsmouth

...continued

cont... Southampton, Winchester and Basingstoke. On the basis of this, can draft four mainland Unitaries. (The Isle of Wight evidently is uniquely placed and all initially agreed it should remain as a single Unitary.)

BDBC is pushing for such a proposal with a 'Northern Hampshire' Unitary comprising BDBC, Hart and Rushmoor. Important to show how a Northern Unitary works as a joint enterprise. These councils already have some joint services, joint working. The economies of North Hants in general look north-eastwards; Farnborough and Aldershot have economic bases which work with that of Basingstoke. This Northern Hants Unitary would have a population of 450K; the original Government guidance was for 500K or above, but since then they have cited lower figures.

All HCC land and other assets within the Unitary area will also transfer to the new Unitary Authority; along with all current 'county' responsibilities.

Recognise the challenges of Adult Social Care and Childrens' Services. This has to be about how those services work for the communities they serve. BDBC has appointed a Director of Adult Social Care and Director of Childrens' Services. At the moment 80% of council tax goes to

County, and of this, adult social care takes 84%. Hard to see a scenario in which BDBC council tax doesn't go up.

There will be all-out elections in 2027 for every Councillor in the new Unitary Authority areas; 'shadow' administrations will then run for a year before taking over in May 2028.

This is about more than lines on a map; it is about fighting for what form of Government we will have.

Question 'What can residents do?'

A: Re Local Government Reorganisation, will come a point, when preparing to submit proposals to Government, that individual letters of support for preferred Unitary option will be very helpful.

A: Re the Local Plan Update. The new Reg 18 first-Draft Plan is due late this year. Once published for consultation, give opinion as strongly as can, particularly around infrastructure; the louder the voice is, the stronger it is.

Question The likelihood now of the Upper Swallick site being selected?

A: Very likely; The new numbers and lack of new large sites means nowhere else to go other than include sites previously removed.

Onnalee noted – this the same question and the same answer now for all sites... for everywhere, for Old Basing through to Bramley.

LOCAL GOVERNMENT REORGANISATION – COUNTY PROPOSALS FOR FOUR OPTIONS

www.hants.gov.uk/News/20250616LGRoptions

'Hampshire County Council is preparing to submit its own proposal to Government this autumn, alongside those from other local authorities in the region. While we continue to work with our partners... as well as sharing data, it's important we put forward our own recommendation... In recent weeks we've been reviewing the detail of four options:

(All options include the Isle of Wight as a single independent unitary authority.)

Option 1 Two mainland unitaries.

- 1 North:** BDBC, East Hants, Hart, New Forest, Rushmoor, Test Valley, Winchester
- 2 South:** Eastleigh, Fareham, Gosport, Havant, Portsmouth, Southampton.

Option 2 Three mainland unitaries.

- 1 North:** BDBC, East Hants, Hart, Rushmoor, Test Valley, Winchester
- 2 South:** South-West: Eastleigh, New Forest, Southampton
- 3 South-East:** Fareham, Gosport, Havant, Portsmouth.

'These options will be considered in July by Hants Cabinet and Full Council meetings of 8th July at 10.30, and 17 July at 10.15 respectively.' [Noting BDBC have Cabinet and Council meetings at 6.30pm on the same days.]

If agreed, wider public engagement will begin during the summer.

Cllr Nick Adams-King, Leader, Hampshire County Council

PARISH PLANNING APPLICATIONS

25/01476/OUT (Validated 13 June) Land West Of Millars, Station Road. Outline application for four dwellings with some matters reserved (appearance and landscaping).

25/01313/OUT (Validated 27 May) Land North of Bramble Bank. Farleigh Road. Outline application, with all matters reserved save for access, for up to 17 dwellings with access, parking, drainage works, open space, landscaping and associated infrastructure.

25/01215/PIP (Pending 19 May) Land North Of Woods. Application for Permission in Principle for the erection of four detached single dwellings and associated access

25/01198/HSE (Validated 14 May) Crockley House, Farleigh Road. Proposed rear extension to garage (part retrospective).

25/00808/HSE (Pending 31 March) Netherfield, Farleigh Road. Re-construction of side extension, new external materials, new roof dormer, new car-port, widening driveway, alterations to doors, windows. Repairs to render, external redecoration and change colour of windows.

24/02778/FUL (Pending 03 December) Land South Of Farleigh Road. Change of use of agricultural land to use for exercising of dogs, including perimeter fence, pathway, shelter, vehicle access and parking.

24/02689/RET (Pending 25 Nov) Appleyard, Woods Lane. Variation of Con 1 (plans) of 20/01098/FUL (four new dwellings with associated parking and access) to amend the approved width of the access road.

24/02430/RET (Pending 12 Nov) 1 Chapel Walk. Change of use from garage to ancillary accommodation and external works (retrospective).

24/01393/TDC (Granted 12 June, ref DC 11 June) Little Acre, Woods Lane. Technical Details Consent for four new dwellings with parking, access and landscaping, in accordance with Permission in Principle 21/01591/PIP.

24/00617/RET (Pending 17 June) 1A Millars Cottages, Station Road. Revised parking arrangements and associated landscaping ref 20/00390/FUL (retrospective).

PARISH TREE APPLICATION

T/00250/25/TPO (Pending 14 May) The Black Barn. T1 Horse Chestnut – 15% canopy thin and localised reduction by up to 2m of SW aspect.

Cliddesden Primary School



A half term full of superb sport and wonderful workshops...

Basketball



Cliddesden Primary School's Basketball team played incredibly well at the regional finals in Southampton. They demonstrated great stamina and determination playing 6 back to back games before lunch where they won three and lost three. They then qualified for the top tier competition after lunch where they played three more games against the best teams in the whole of Hampshire, including teams from the Isle of Wight. After multiple baskets against some very skilled teams they finished the day by securing 8th place in the county.

Girls Tag Rugby



Our girls Tag Rugby team had a lovely day out yesterday at the Basingstoke Schools Girls Tag Rugby Festival. They came third in their pool winning two games, losing two and drawing one in the morning. This meant they qualified for the top group in the afternoon who were all challenging to win the cup. The competition was much harder at this stage and we lost most of our games but had the consolation of beating Park View. The girls all tried hard and we also had a couple of new players from

Year 4 in our team. Congratulations to Castle Hill for winning the cup.

Tag Rugby Tournament



We were lucky enough to have two teams represent our school at the annual Tag Rugby Tournament held at May's Bounty. For a number of the children, this was the first time they had represented their school in an external sporting event. The weather was changeable, one-minute beautiful sunshine and pouring with rain the next. This did not deter our teams. Each team played a number of games against other local Basingstoke schools and despite the score line not being in our favour, the children learnt some valuable lessons. They learnt to work as a team and the need to communicate. They demonstrated our school values with each and every child contributing a skill of some description. Some showed speed and accuracy, others communication and leadership and many showing how they had developed their skills and understanding of the game.

The children had a wonderful time at the Summer School Disco.



Morse Code Workshop

During the Spring term, Chestnut Class have been learning about the Titanic. As part of the topic, they took part in a Morse code workshop run by Mr Kevin Wood C.Eng. Mr Wood is a Cyber Design Authority who originally



trained as a Morse Code operator before working on ships radios for the Marconi company. The class learnt about the different distress call signs, CQD and SOS, how to both send and receive Morse and about the importance of keeping a message short - every letter cost money! Everyone had a go using a real Morse key and used the knowledge they have gained over the term to write their own telegrams from the Titanic. They then listened to Mr Wood sending Morse and decoded his message. Mr Wood said "The class were so knowledgeable, I was very impressed". The children greatly enjoyed the workshop, especially when they received a morse code message from a book character they had been learning about in English - 'Johnny Trott saved Kaspar'. Everyone agreed it was a most enjoyable afternoon.



Chestnut Class were lucky to have Mrs Elliot, a desk-based assessment coordinator and historic buildings, give a workshop on how ground is excavated by archaeologists. Using our field and the surrounding area as an example, she explained that the first thing archaeologists do when looking at a site is to undertake research using maps or online information to assess the area. Once they are ready to start excavating, archaeologists first dig a test trench across an identified feature. They remove the top soil and then dig down until they reach the natural layer. Much to the excitement of the children she used a cake to demonstrate the process. Within the cake she demonstrated how different artefacts and graves are documented and labelled. Mrs Elliot showed the class the difference between Christian burials and non-Christian burials including directions and position. All the children expressed their enjoyment of the workshop and displayed a new understanding of archaeology and the process they use. They all thoroughly enjoyed a slice of the cake at the end of their morning.

Animal Workshop



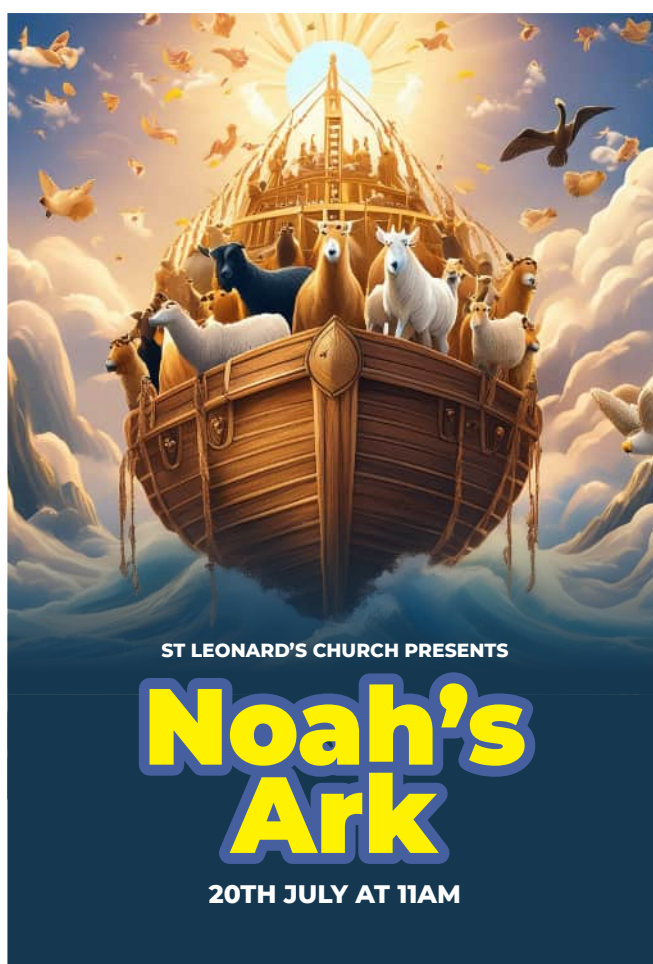
Today Poppy's dad brought in his collection of amazing animals. We looked carefully at different insects, including a praying mantis. We also found out about spiders and how tarantulas drop hairs when they are frightened. The tarantula was very big and hairy. Mr Hamilton showed us some tree frogs and explained how they use their feet to stick to smooth surfaces. We then looked at some snakes and a tegu. Poppy showed us her gecko. Lastly, we were amazed by the turtle which was enormous and very heavy. Thank-you very much to Mr Hamilton for giving up his time to share his love of amazing animals with us. We are just beginning our theme of animals in hot and dry habitats and now know some animals to research.

Rainforest Visit



Willow Class arrived at Gatwick airport ready to fly to Manaus in Brazil, to visit a rainforest. We collected our passports, went through security and had our bags scanned. Then we had our passports stamped and added a stamp of our own too!

We waited in the busy airport to board the plane. Once we matched our boarding pass number to our seat we were ready for the safety talk. The pilot said hello, and we had a slightly bumpy take-off. As the flight was so long, the air stewards passed round drinks and snacks. We could see the forest as the plane flew over Brazil, and we landed safely into a rainy Manaus. The rainforest leader met us, taking us through passport control and to our rainforest classroom. The leader checked all our backpacks and opened the door for us to hear the rainforest sounds. After lunch we went exploring with iPads and found many animals. We had a great time exploring and now have many more questions to ask about the rainforest.



Farleigh Parish Playgroup



Cliddesden Millennium Village Hall

Friday Mornings 11am-12noon Term Time

4th & 11th July (our end of term party). Return 12 Sept.
Wishing you a happy summer holiday.

0 - 4 year old and their grown-ups. A warm welcome awaits you and we look forward to you joining us for a fun and happy time

Cost: £3 donation per family

Contact:

Melanie: Qualified in early years (07833 528040)

Claire: Qualified teacher (07757 498653)



CHILDREN'S SINGING GROUP



Come along, meet new friends, and learn new Songs

We meet every Friday during term time
3.45pm snack, 4-4.30pm singing

ST LEONARD'S CHURCH, CLIDDESSEN



Scan me!

June 2025 Newsletter

Phone and Continuity of Care Improvements.

Last month the practice introduced their new team working and phone routing system.

Each patient should now have been informed by letter or text who their named GP is and which team they work in. If you don't know please ask next time you contact the surgery. Stephen Collier the practice manager has reassured us that if you get through to the wrong team, the staff member will still deal with your enquiry without having to transfer you. Continuity of care should improve as you will be dealing with the same team each time you contact the practice. Keep a note of your GP and the team colour name. We knew this would cause some disruption, but the practice has minimized this. Many patients report a better and faster experience contacting the practice, but some are still experiencing issues, with long wait times on the phone and routine appointments being booked 28 days or more from contacting the practice. Although this may not be ideal, it enables more clinically urgent appointments to be available when needed. If the allocation to a particular team is causing significant issues for you please use the complaints system to discuss a solution.

The Practice complaints process

The process is detailed on the practice website or you can send a letter to The Manager at Gillies Health Centre or email:

hiowicb-hsi.cghpartnership.complaints@nhs.net

Buckskin Over 55 event.

Last month practice staff from the frailty and social prescribing teams, and PPG members were at the Buckskin Over 55's event to meet and support patients. They helped patients with many health and well-being issues without the need for an appointment.

Anne, a Social prescriber from the practice also promoted bowel cancer screening. *"Patients between 50 and 74 are invited to take part in bowel cancer screening every 2 years. Kits are sent to patients to provide a small sample of poo. If you have not returned a sample or think your test is due and haven't received a kit simply ring 0800 707 6060 to request one."*

Quality Care Commission Inspection.

The practice has been inspected in some areas of work. We will let you have an update when this is published.

Disability Awareness Day

27th June 2025, 9.30am to 4pm at The Malls Shopping Centre, Basingstoke.

The PPG Website www.cghppg.weebly.com hosts the online version of this news with direct links.

The website also has a 'Self Help A-Z' of Health and Wellbeing information, fast track treatment options, support groups and local contacts.

Citizens Advice 0808 278 7829 can access the resource for patients who cannot use the internet.

Email us: cghb.surgeryppg@btinternet.com

Unpaid carers support 'drop in' with Princess Royal Trust for Carers and the PPG at St Andrews Surgery 10am and 2pm, on Tuesday 24th June 25.

Citizens Advice Basingstoke

A New hub has been opened on Tuesdays between 09.30am and 12.30 am at the Ridgeway Centre, Basingstoke.

Check your Osteoporosis Risk

A half of women and one fifth of men (over 50) will break a bone due to osteoporosis.

Check your risk immediately on the Royal Osteoporosis Society website. www.theros.org.uk/risk-checker

Membership of the Patient Participation Group is open to all patients of the practice.

We meet once a month alternating between face-to-face meetings and using the on-line tool Zoom with meetings lasting around 60-90 minutes starting around 7 pm. We discuss patient issue trends to be raised with practice management to enable improvements.

We are particularly interested in anyone who would be willing to not only attend our meetings, but to take an active part in running the group or getting involved in our patient facing support events.

Our volunteers are supported to 'Make Every Contact Count' and the current 'work' includes:

- Improving Patient access to Health Services.
- Improving take up of cancer screening.
- Improving support for Carers
- Improving Dementia support access.
- Ageing Well information provision.
- Responding to calls for help on social media by signposting services and helping patients navigate the healthcare system.
- Providing vaccination clinic marshalling.

If you are interested in joining the PPG apply online at www.cghppg.weebly.com/join-the-ppg or to find out more email us.

Your details will be sent to the practice manager who will validate that you are a patient of CGHB, before passing your details to the patient group.

VILLAGE DIRECTORY

POLICE	PCSO Andy Jones (Basingstoke Rural South) <i>andrew.jones.13301@hampshire.pnn.police.uk</i>	07775 542 021
NEIGHBOURHOOD WATCH	Simon Barker <i>sibarksy@hotmail.com</i>	07732 100 990
PARISH COUNCIL	<i>www.cliddesdenparishcouncil.info</i> Susan Turner (clerk) <i>clerk.cliddesden@gmail.com</i> Alan Tyler (chairman) <i>alanbtyler19@btinternet.com</i> Mark Gifford <i>m.gifford1@outlook.com</i> Alison Mosson <i>alison@abe.co.uk</i> Dave Rudge <i>hugh.rudge@gmail.com</i>	07515 777 060 460 425 07504 104 621 07721 046 146 07813 070 261
TREE WARDEN	Alison Mosson <i>alison@abe.co.uk</i>	07721 046 146
WARD COUNCILLORS	Onnalee Cubitt <i>cllr.onnalee.cubitt@basingstoke.gov.uk</i> Kate Tuck <i>cllr.kate.tuck@basingstoke.gov.uk</i> Sheena Grassi <i>cllr.sheena.grassi@basingstoke.gov.uk</i>	07762 067 411 07762 067 411 07561 060 596
COUNTY COUNCILLOR MEMBER OF PARLIAMENT	Juliet Henderson <i>juliet.henderson@hants.gov.uk</i> Alex Brewer MP <i>alex.brewer.mp@parliament.uk</i> House of Commons, London SW1 AOM	07738 289 849
MILLENNIUM VILLAGE HALL	<i>www.cliddesdenhall.org.uk</i> Leslie Smith (Chairman) 3 rd alarm contact Angie Fewster (Vice Chair) 2 nd alarm contact Ken Rampton (Caretaker) 1 st contact if alarm goes off Pat Rampton (Lettings Secretary) <i>bookings@cliddesdenhall.org.uk</i> Jo Capehorn (Secretary) Julie James (Treasurer)	07973 922 560 475 848 461 034 461 034 07528 856 157 363 753
NEIGHBOURHOOD PLAN	<i>www.cliddesdennp.wixsite.com/cliddesdennp</i>	
CLIDDESSEN COMMUNITY CONSERVATION GROUP	<i>cliddesdenconservation.org</i> Alison Mosson (Chairman) <i>alison@abe.co.uk</i> Angie Fewster (Secretary) <i>angie@fewster.me.uk</i>	07721 046 146 475 848
JOLLY FARMER	<i>thejollyfarmercliddesden.co.uk</i> <i>theJollythai@gmail.com</i>	358 288
CLIDDESSEN PRIMARY SCHOOL	<i>www.cliddesden.hants.sch.uk</i> Kenneth Davies (Headteacher)	321 571
BROWNIES	Sian Banks	333 151
FARLEIGH PLAYGROUP	Claire Nunn Melanie Gill	477 197 07833 528 040
ST LEONARD'S DISTRICT CHURCH COUNCIL	<i>www.farleighcandoverandwield.org.uk</i> Rectory: Vacancy Peter Raine (Church Warden) <i>peter.c.w.raine@btinternet.com</i> Val Gofton-Salmond Julian Nunn	381 221 474 425 477 197
FILM CLUB	Diane Rampton <i>dianerampton@btinternet.com</i>	467 533
HORTICULTURAL SOCIETY	<i>www.ellisfield.org.uk/hortsoc.html</i> Marilyn Smith	462 584
WOMEN'S INSTITUTE	Janet Fagg (President) <i>jkfagg@gmail.com</i> Pat Rampton (Vice President) Julia Ross (Secretary) <i>cliddesdenssec@hampshirewi.org.uk</i>	461 034
CLIDDESSEN & FARLEIGH WALLOP EDUCATIONAL TRUST	Vicky Tibble (Secretary & Treasurer) <i>Vicky.tibble@outlook.com</i> By text to: <i>admin@portsmouthstates.co.uk</i>	07552 927 692
AGE CONCERN	The Orchard, White Hart Lane, Basingstoke RG21 4AF <i>reception@ageconcernbasingstoke.freemove.co.uk</i>	423 874
B/STOKE ASTRONOMICAL SOC	<i>www.basingstokeas.org.uk</i>	
HILL & DALE	Jean Frost (Editor) <i>hillanddaleeditor@gmail.com</i> Ben Maunder (Distributor)	327 859
VILLAGE ARCHIVE	<i>www.cliddesden-archive.uk</i> David Brown <i>dave@cliddesden-archive.uk</i>	
VILLAGE NEWSLETTER	Editor: David Brown Copy date 20th preceding month to: <i>bootofthedailybeast@gmail.com</i>	
CLIDDESSEN CHAT	<i>www.facebook.com/groups/cliddesdenchat</i>	