

VILLAGE QUIZ NIGHT!



+



This popular annual quiz for teams of up to 6 people will be held at Cliddesden Millennium Village Hall on

Saturday, 14th March, at 7.00 pm.

This is a fund-raising event with all proceeds going to St. Leonard's Church, Cliddesden.

Tickets, priced £15 per person, to include a hot meal and one glass of wine, beer or a soft drink from the licensed bar, will be limited and only on sale until **Saturday, 7th March**, available from:

Val Gofton-Salmond (07901 674531)

Please note:

This is the event that had to be unavoidably postponed from 8th November

100 Club



Happy New Year members

The draw for January was called at the Coffee Morning held at the Village Hall on 12th January 2026.

Here are the lucky winners

1 st	Katie James	445
2 nd	Julie James	442
3 rd	Kathy Snook	15

Congratulations.

If you are not already a member of the 100 Club and fancy being a lucky winner please consider joining. It is an easy way of supporting our Village Hall while at the same time having a flutter. The more members the bigger the prizes. Further details about joining as well as details for renewing subscriptions will appear in next month's newsletter or contact me using the details below.

Next Coffee Morning 9th February – do pop along.

Rose Beevers Tel: 475944
100club@cliddesdenhall.org.uk



In this issue

Village quiz night	1
100 Club	1
Save the date - village litter pick.....	1
The Cliddesden Players' Pantomime	2
St. Leonard's Christmas Sing-a-long	3
Farleigh Playgroup	3
Coffee morning.....	3
Cliddesden Women's Institute.....	4
Film club	5
Parish council pages	6
Pancake Party	8
Children's singing group	9
Youth group	10
Basingstoke Ladies Probus Club	11
Village directory	10

SAVE THE DATE!

3CG Litter Pick

Saturday 28th March

11am



Cliddesden
Community
Conservation
Group



The Cliddesden Players' Pantomime

Cast your mind back to 12th & 13th December last year and the Village Hall was filled with fun and laughter as the panto "*Catch a Falling Star*", written by Martin Amos, was performed with the Players' customary gusto!

A happy ending ensured that the audience went away knowing that kindness and forgiveness triumphed as Twinkle, the Star, asked the Bad Fairy to share the top of the Christmas tree so that they could stop their feuding. Even the Grinch admitted he might enjoy Christmas for once!

The magic ended, the toys went back to how they were, Father Christmas delivered his presents to Cliddesden and the house was silent once again.

Many thanks to all our actors, the stage management crew, lighting & sound tech, Sue Griffiths for finding the wonderful costumes, front of house, bar and refresh-

ment helpers – what a fantastic team! And a mention must go to those who worked so long and hard the previous weekend to build the stage, create the set and make props. Special thanks must go to Darren Capehorn. And then to take it all down again on the Sunday!

Our profit, which goes straight into Village Hall maintenance funds, was £3,419.97. We are very lucky to have such a wonderful Hall to host village social events, bringing friends and neighbours together, so please support it all you can.

Our charity for programme donations this year was Basingstoke & District Young Carers. Thanks for your generosity, an amazing £220.58 was collected.

Best wishes from The Cliddesden Players.

Save the Date: Summer Play Friday 12th & Saturday 13th (+ BBQ) June.



St Leonard's Sing-a-long!

St Leonard's hosted a Christmas Sing-a-long for Otters Nursery, Cliddesden School and James' Place. It was wonderful to bring these different groups from the community together, and celebrate this special time of year. We look forward to welcoming them back again, soon!



Farleigh Parish Playgroup



Cliddesden Millennium Village Hall

Friday Mornings 11am-12noon Term Time

6th, 13th & 27th February (closed on 20th for half term) and
6th, 13th, 20th & 27th March (end of term Easter party)

0 - 4 years old and their grown-ups. A warm welcome awaits you and we look forward to you joining us for a fun and happy time

Cost: £3 donation per family

Melanie: Qualified in early years (07833 528040)

Claire: Qualified teacher (07757 498653)



Cliddesden Millennium Village Hall



Please come along to have a natter and make new friends, browse the second-hand book stall, and of course enjoy a good cuppa and a slice of cake!

The 100 club is also drawn here each month.

We have table tennis available and all the equipment you will need if you fancy a game.

We meet on the second Monday morning of each month, from 10.30 – 12 noon.

Hope to see you there, all ages are welcome.

Next dates: **February 9th, March 9th.**

Gill (01256 359413)



CLIDDESSEN

January meeting

This month 14 members came along to a craft workshop, where they tried their hand at making macrame keyrings or some cards.

We provided prepared packs of three different types of keyrings:

- Feather/Leaf
- Flat Plait
- Twisted.

We set ourselves up into two groups, then proceeded to teach some basic techniques in macrame.

Most members completed two keyrings and took a third pack, of their choice, home with them to have go.

Everyone enjoyed learning some new skills whilst chatting to friends.

Our next meeting is Monday 16th February where Paul Beevers will talk to us on Local Wild Flowers.

Caroline Poulter



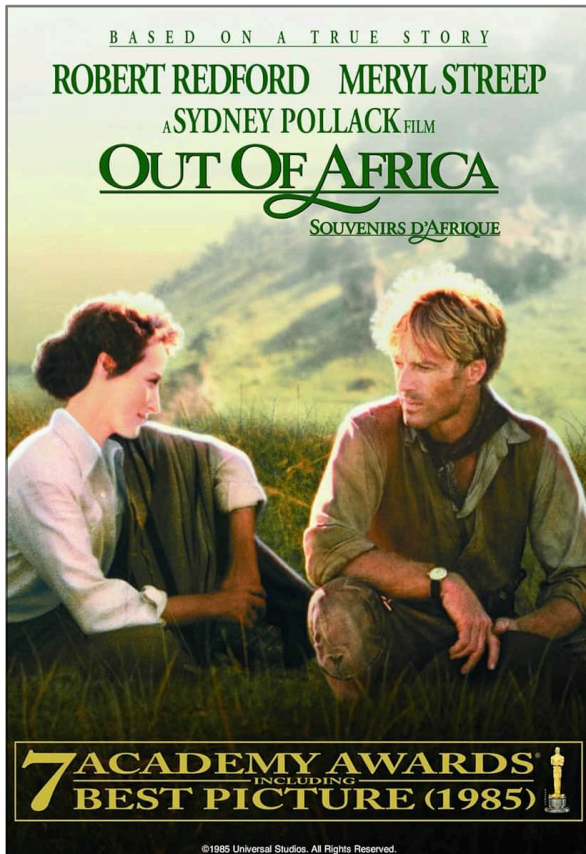
Social and Entertainment Club

Cliddesden Millennium Village Hall

'You'll be sure of a warm welcome and a great evening'

The bar opens at 7.30pm and we start at 8pm. There is an intermission half way through during which refreshments and drinks at the bar are available at very low prices.

Admission is only £2 per person. **Please note we work on a cash only basis.**



Thursday 5th February
Out Of Africa
 1985, 161 minutes
 Certificate PG

Out Of Africa is based loosely on the 1937 autobiographical book Out of Africa by Isak Dinesen

Set in Kenya in 1913, Danish aristocrat Karen Dineen (Meryl Streep) proposes a marriage of convenience to the brother of a Swedish nobleman who rejected her, Baron Bror Blixen. They plan to move to Nairobi, where Bror intends to invest Karen's money in a dairy farm. When she joins him a few months later to marry him, Karen discovers he has changed their plan and instead bought a coffee farm.

Starring Meryl Streep, Robert Redford, Klaus Maria Brandauer, Michael Kitchen, Malick Bowens and Lesley Phillips.

NB This is a long film and we will therefore be starting at 7.45pm, 15 minutes earlier than normal.



Thursday 5th March
Six Minutes to Midnight
 2020, 102 minutes
 Certificate 12A

Six Minutes to Midnight

In the summer of 1939, influential families in Nazi Germany have sent their daughters to a finishing school in an English seaside town to learn the language and be ambassadors for a future looking National Socialist. A teacher there sees what is coming and is trying to raise the alarm. But the authorities believe he is the problem.

Starring Judi Dench, James D'Arcy, Jim Broadbent, Eddie Izzard, Carla Juri and Celyn Jones

Everybody is welcome from wherever you live. We hope to see you there.

Diane Rampton
dianerampton@btinternet.com



Next Parish Council meeting Tuesday
10 March 7.30pm (a week later than
the usual schedule).

NOTES FROM JANUARY'S PARISH COUNCIL MEETING

Present Parish Councillors and Clerk, Tree warden Alison Mosson, Village Hall Chairman Les Smith. Seven members of the Public.

Public session A request for the Parish Council to consider purchasing tools and grass cutting equipment for community use around the Village. For example St Leonard's churchyard is a SINC and the church relies on volunteers to manage it. Parish Council agreed to consider and requested further detail to understand the scale of the request and type of equipment needed.

Martin Biermann To record with great sadness the death of Martin Biermann just before Christmas. As reported in today's *Gazette* (06 January) 'tributes pour in for former Councillor, former Mayor'. Martin also ran a printing company 'Personalised Print' and printed the Cliddesden *Newsletter* for many years – continuing up until November 2025. He made every effort to contribute wherever he could, and is remembered for being always polite, cheerful and friendly to all. He will be greatly missed and our deepest condolences to his family.

Parish Councillors Alison Mosson has resigned from the Parish Council having served several stints over many years; her resignation accepted with great regret. To record how much Parish Councillors appreciate the work Alison has done and particularly her contribution to producing the Neighbourhood Plan. It would not have been possible to achieve this without her: 'Thank you very very much.' Alison will continue as Tree Warden, in addition to everything else she does in the Parish. David Raggett from Hackwood Lane was co-opted to the Parish Council with unanimous agreement.

Cliddesden Parish Council now comprises: Cllrs Alan Tyler (Chairman), Nicola Barnes, Mark Gifford, David Raggett and Dave Rudge.

Precept request 2026/27 The draft budget for 2026/27 continues to show expenditure (less CIL) to be exceeding the Precept income.

Agreed that gradual Precept increases are needed to address the

budgeted deficit and to move towards building reserves for eg updating the Neighbourhood Plan. Agreed a Precept request of £9,994 which equates to a 5% increase.

Bus shelter repair quotes received based on structural engineer advice. Expenditure will be from CIL funding.

Direction sign post at the pond

The current condition reported on the HCC website. The post previously had three finger boards directing to Basingstoke; Ellisfield and Bradley; Farleigh Wallop and the Candovers.

Farleigh Road traffic calming

Highways will renew the 30mph roundels 'painted' on Farleigh Road from Southlea to beyond Otters' nursery. To be Parish (CIL)-funded, via the 'Community-funded initiative'.

Newsletter A proposal to consider again delivering a printed copy to all households, as used to happen pre-COVID. Since then approx two thirds of households chose to receive via email only, but anecdotal evidence suggests that the *Newsletter* is now not so widely read. It is thought that its sitting on a phone rather than on a table may be a contributing factor. But also recognising the key role played by volunteer distributors and that more would be needed.

Response to a question re the different roles of the Parish Council and STaNHd in relation to the proposals for Upper Swallick:

1. The role of the Parish Council (PC) in the Planning system is as a consultee to the Local Planning Authority. Thus the PC will form a view in response to a planning application or a policy consultation based on:
 - the impact on the Village and the Parish as a whole
 - the wider policy and legal framework, and
 - the majority view of residents.
2. When Upper Swallick was first proposed in 2019, the PC's agreed position – based on the above – and in anticipation of it becoming a formal planning application or policy allocation – was strongly opposed. This position has not changed.
3. The PC will take all means available within its remit to inform itself and

BDBC'S DRAFT LOCAL PLAN

To thank everyone who responded to BDBC's Reg 18 Spatial Strategy consultation. The Parish Council and STaNHd each submitted comprehensive comments supported by expert evidence.

Officers are reviewing responses and the resulting revised (Reg 19) Draft is due to be published for further consultation this summer.

BDBC's schedule, the 'Local Development Scheme (LDS)' says 'This involves the publication of the Plan in a form which the council believes to be sound and which it intends to submit for examination. A further six-week consultation (Reg 20) asks specifically for comments on the legal compliance and soundness of the plan.'

www.basingstoke.gov.uk/LDS

The Parish Council and STaNHd are preparing responses to the Reg 19 Submission Draft; these will be sent with the final Plan and evidence base to the Secretary of State for Inspector examination.

residents regarding issues affecting the Parish; in relation to Upper Swallick it will oppose the proposal by all means open to it within the planning system.

4. The PC also has a power to support and fund Neighbourhood Plans.

5. It's not the role of the PC to lobby or seek to influence residents to support or oppose any individual planning proposal or application.

6. It's not within its remit – as a Local Government Organisation funded via Precept – to seek public donations.

7. An Action Group within its stated aims can do both 5. And 6. above.

8. Thus a Parish Council and a residents' action group can work side by side and support each other where their aims coincide, but their roles remain separate.

9. STaNHd was formed by residents of Cliddesden and neighbouring Parishes in response to the Upper Swallick proposal in 2019, but with a stated aim of protecting the North Hampshire Downs in general. Cliddesden STaNHd is an offshoot which focuses specifically on Cliddesden interests.

DRAFT DEC 2025 NPPF

Consultation to 10 March

www.gov.uk/government/consultations/national-planning-policy-framework-proposed-reforms-and-other-changes-to-the-planning-system

The draft NPPF is restructured into two main sections:

- 1 Plan-making policies, and
- 2 National decision-making policies (NDMPs).

NDMPs seek to provide 'a consistent baseline for planning decisions across the country'.

Potential consequences:

- Limited scope for Local Planning Authorities to tailor NDMPs at the local policy level.
- Adopted Local Plans which conflict with NDMPs will carry 'very limited weight' once new NPPF is adopted.

Uncertainties which need to be resolved...

- How will tensions between NDMPs and existing Local Plans be reconciled/addressed?
- What will this mean for Local Plans in late stages of production or adoption at the time the revised NPPF takes effect?

The 'presumption in favour of sustainable development' and its tilted balance test becomes a permanent 'presumption in favour of suitably located development' which is focused on location-based needs and spatial strategies.

Government 'want to make clear what forms of development are acceptable in principle in different locations as part of creating a more rules-based approach to development'. This would 'direct development to the most appropriate location'.

Substantial weight is to be given to the benefits of supporting business growth in particular sectors, including AI Growth Zones, logistics, town centres, and agriculture and rural development.

See www.irwinmitchell.com/news-and-insights/expert-comment/post/102mfb5/decoding-the-new-nppf-consultation-draft-key-takeaways-from-december-2025s-prop

POLICE UPDATE

FROM PCSO ANDY JONES

Household burglaries During the first half of January, person or persons unknown targeted dwellings in Dummer, Upton Grey and South Warnborough among nine others as far as Highclere and Whitchurch.



Crime prevention advice

- If you have to keep your jewellery at home, invest in a safe and seriously consider installing a monitored alarm system. Your insurance company will provide advice as to which type and grade of safe and alarm is compliant with your home insurance policy.
- Ensure that your home is fully secured; take this opportunity to look around your property and consider improving any areas of poor security. More information can be found at www.hampshire.police.uk
- Keep an inventory of your jewellery. This can be done on line via Immobilise; for more information go to www.immobilise.com
- Photograph your jewellery. Place your jewellery against a plain background with a ruler next to it to give an idea of size; this can then be uploaded to Immobilise
- When leaving your home ensure doors and windows are locked, and use a timer that switches lights on when you go out to make your home look occupied.
- Book a free home security survey with the Blue Lamp Trust by calling 0300 777 0157 or by visiting www.bluelamptrust.org.uk
- Be cautious about what you say on social media as you cannot be sure who will see your posts. For example, don't indicate that you are going on holiday.

For further advice, please visit our website

www.hampshire.police.uk/cp/crime-prevention/protect-home-crime/

PARISH PLANNING APPLICATIONS

26/00041/HSE (Validated 15 January)
28 Southlea. Erection of single-storey rear extension, garage and porch to replace existing.

T/00001/26/TCA (Approve 27 January)
St Leonard's. Reduce height of 1x Pine by approximately 3m to prevent union failure/storm damage of twin stems (finished height 40-50ft approx). Remove 2x low boughs to avoid limb failure and to re-balance crown.

25/02855/LDPO (Grant 28 January)
Swallick Farm House, Alton Road. Certificate of lawful development for proposed change of use of agricultural building to flexible use within class E (commercial, business or service) as per Town & County Planning (GPD) Order 2015 (Class R Part 3, Sch 2).

25/02856/LDPO (Grant 27 January)
Swallick Farm House, Alton Road. Certificate of lawful development for proposed change of use of agricultural

building to flexible use within class B8 (storage or distribution) as per Town & County Planning (GPD) Order 2015 (Class R, Part 3, Schedule 2).

25/02272/FUL (Pending 18 Sept)
Mistral, Hackwood Lane. Erection of a detached dwelling (self build).

25/01597/HSE (Pending 10 July)
Three Horseshoes, Woods Lane. Replace cement render with lime render insulation system, replace windows and doors; replace tarmac with resin driveway. (Amended; reference to chimney removed.)

25/01313/OUT (Pending 27 May)
Land North of Bramble Bank. Farleigh Road. Outline application, with all matters reserved save for access, for up to 17 dwellings with access, parking, open space etc.

24/00617/RET (Pending 17 June 2024)
1A Millars Cottages, Station Road. Revised parking and landscaping, ref 20/00390/FUL (retrospective).

PARISH PLANNING APPEALS

6001439 Appeal in progress. Land South of Woods Lane. PIP for up to four dwellings and associated access.

PENSDELL FARM

Proposals as have recently appeared in the public domain were not part of the Reg 18 Spatial Strategy and are not a formal planning application. As such there is at present no reason or process via which to comment.

WINSLADE APPLICATIONS

25/01235/FUL (Pending 01 July)
The Firs, Alton Road. Material Change of Use to a Gypsy/ Traveller site of two pitches with one mobile home, one touring caravan and one dayroom per pitch, and alteration of access onto A339 (part retrospective).

25/00200/LBC (Pending 06 Feb 2025) and **25/00199/FUL** (Pending 28 May)
Hackwood House & Park. Conversion to hotel and ancillary hotel use.

PANCAKE PARTY

AT ST LEONARD'S CHURCH
CLIDDESSEN

TUESDAY 17TH FEBRUARY
10-11AM





MINOR KEYS

A CHILDREN'S SINGING GROUP

3.45-4.30pm

EVERY FRIDAY

ST LEONARD'S CHURCH



ST LEONARD'S CHURCH

YOUTH GROUP

AGES 10-14



12 NOON-
1.30PM

14TH DEC 11TH JAN 8TH FEB
SECOND SUNDAY OF THE MONTH

ST LEONARD'S CHURCH, CLIDDESSEN



THE ASSOCIATION OF
RETIRED PROFESSIONAL
AND BUSINESS PERSONNEL
IN LOCALISED CLUBS
THROUGHOUT THE WORLD

*Basingstoke Ladies
Probus Club*

BASINGSTOKE LADIES PROBUS

RECENT HAPPENINGS !

At the 32nd AGM of the Basingstoke Ladies' Probus Club, Alison Wood took up her role as President for the ensuing year of this social club for retired and semi-retired women with professional backgrounds or supervisory business experience, as reflected in the acronym PROBUS. At this regular monthly gathering in the BCoT restaurant followed by, as always, a delicious 3-course lunch, outgoing President Janet Fagg handed Alison the ribbon of office.

More recently the Club was treated to a fascinating talk by Hampshire Councillor Rhydian Vaughan MBE who, as a war historian and a passionate battlefields guide, has previously proved a very interesting speaker. On this occasion he held his audience spellbound as he detailed the sinking of the battleship, the Bismarck on 27th May, 1941 in a battle which lasted just 16 minutes and which resulted in what was said to be the Royal Navy's biggest disaster, the sinking also of HMS Hood with the loss of 1415 men - just 3 survived after being in the water for 3 hours. The Bismarck shortly met its own demise resulting from, initially, a torpedo fired from an antiquated Swordfish biplane from HMS Ark Royal which jammed her rudders. Thus unable to manoeuvre she was finally sunk by two torpedoes from HMS Devonshire. 2,090 lives were lost and for some time rescue efforts were made by British warships, ultimately saving 114 personnel, but when it was thought a U-Boat had been spotted, the rescue had to be abandoned.

The membership of this Ladies Probus Club covers a wide spread of experiences stimulating interesting conversations which, together with presentations by guest speakers, makes for lively interchanges. Outside visits, when BCoT is shut in summer, have recently included a private tour of Stratfield Saye and a visit to a speaker's beautiful Japanese garden, also the opportunity for theatre visits - several had attended the latest stunning production by **BATS**, Basingstoke's own excellent amateur theatre company, of 'Come From Away' which deals with the hospitality shown to those on the 38 planes diverted to Newfoundland following '9/11' - particularly emotional viewing for one member who was actually in New York on that dreadful day.

For more information and enquiries about possible membership, please contact: Admin
Secretary: reverendjane@hotmail.co.uk - 07754 296994

VILLAGE DIRECTORY

POLICE	PCSO Andy Jones (Basingstoke Rural South) <i>andrew.jones.13301@hampshire.pnn.police.uk</i>	07775 542 021
NEIGHBOURHOOD WATCH	Simon Barker <i>sibarksy@hotmail.com</i>	07732 100 990
PARISH COUNCIL	<i>www.cliddesdenparishcouncil.gov.uk</i> Susan Turner (clerk) <i>clerk.cliddesden@gmail.com</i> Alan Tyler (chairman) <i>alanbtyler19@btinternet.com</i> Mark Gifford <i>m.gifford1@outlook.com</i> Dave Rudge <i>hugh.rudge@gmail.com</i> Nicola Barnes <i>barnes72nb@gmail.com</i> David Raggett <i>davidaraggett@gmail.com</i>	07515 777 060 460 425 07504 104 621 07813 070 261
TREE WARDEN	Alison Mosson <i>alison@abe.co.uk</i>	07721 046 146
WARD COUNCILLORS	Onnalee Cubitt <i>cllr.onnalee.cubitt@basingstoke.gov.uk</i> Kate Tuck <i>cllr.kate.tuck@basingstoke.gov.uk</i> Sheena Grassi <i>cllr.sheena.grassi@basingstoke.gov.uk</i>	07762 067 411 07762 067 411 07561 060 596
COUNTY COUNCILLOR MEMBER OF PARLIAMENT	Juliet Henderson <i>juliet.henderson@hants.gov.uk</i> Alex Brewer MP <i>alex.brewer.mp@parliament.uk</i> House of Commons, London SW1 AOM	07738 289 849
MILLENNIUM VILLAGE HALL	<i>www.cliddesdenhall.org.uk</i> Leslie Smith (Chairman) 3 rd alarm contact Angie Fewster (Vice Chair) 2 nd alarm contact Ken Rampton (Caretaker) 1 st contact if alarm goes off Pat Rampton (Lettings Secretary) <i>bookings@cliddesdenhall.org.uk</i> Jo Capehorn (Secretary) Julie James (Treasurer)	07973 922 560 475 848 461 034 461 034 07528 856 157 363 753
NEIGHBOURHOOD PLAN	<i>www.cliddesdennp.wixsite.com/cliddesdennp</i>	
CLIDDESSEN COMMUNITY CONSERVATION GROUP	<i>cliddesdenconservation.org</i> Alison Mosson (Chairman) <i>alison@abe.co.uk</i> Angie Fewster (Secretary) <i>angie@fewster.me.uk</i>	07721 046 146 475 848
JOLLY FARMER	<i>thejollyfarmercliddesden.co.uk</i> <i>theJollythai@gmail.com</i>	358 288
CLIDDESSEN PRIMARY SCHOOL	<i>www.cliddesden.hants.sch.uk</i> Kenneth Davies (Headteacher)	321 571
BROWNIES	Haley Louise <i>hayley-scott@live.co.uk</i>	07740 116 853
FARLEIGH PLAYGROUP	Claire Nunn Melanie Gill	477 197 07833 528 040
ST LEONARD'S DISTRICT CHURCH COUNCIL	<i>www.farleighcandoverandwield.org.uk</i> Rectory: Revd Jennifer Wright <i>rev.jenn4@gmail.com</i> Peter Raine (Church Warden) <i>peter.c.w.raine@btinternet.com</i> Val Gofton-Salmond Julian Nunn	593 263 381 221 474 425 477 197
FILM CLUB	Diane Rampton <i>dianerampton@btinternet.com</i>	467 533
HORTICULTURAL SOCIETY	<i>www.ellisfield.org.uk/hortsoc.html</i> Marilyn Smith	462 584
WOMEN'S INSTITUTE	Janet Fagg (President) <i>jkfagg@gmail.com</i> Pat Rampton (Vice President) Julia Ross (Secretary) <i>cliddesdenssec@hampshirewi.org.uk</i>	461 034
CLIDDESSEN & FARLEIGH WALLOP EDUCATIONAL TRUST	Vicky Tibble (Secretary & Treasurer) <i>Vicky.tibble@outlook.com</i> By text to: <i>admin@portsmouthestates.co.uk</i>	07552 927 692
AGE CONCERN	The Orchard, White Hart Lane, Basingstoke RG21 4AF <i>reception@ageconcernbasingstoke.freemove.co.uk</i>	423 874
B/STOKE ASTRONOMICAL SOC	<i>www.basingstokeas.org.uk</i>	
HILL & DALE	Jean Frost (Editor) <i>hillanddaleeditor@gmail.com</i> Ben Maunder (Distributor)	327 859
VILLAGE ARCHIVE	<i>www.cliddesden-archive.uk</i> David Brown <i>dave@cliddesden-archive.uk</i>	
VILLAGE NEWSLETTER	Editor: David Brown Copy date 20th preceding month to: <i>bootofthedailybeast@gmail.com</i>	
CLIDDESSEN CHAT	<i>www.facebook.com/groups/cliddesdenchat</i>	