

### In This Issue

Village hall news.....	1	Parish council pages .....	4
The Women's Institute .....	1	St Leonard's village quiz night.....	6
Horticultural society.....	2	Women's Institute Christmas Workshop .....	6
St Leonard's service times.....	3	Farleigh parish playgroup.....	6
Southleigh Trick or Treat .....	3	Children's singing group .....	6
World Sight Day.....	3	Film club.....	7
100 Club winners.....	3	Village directory .....	8
Coffee morning.....	3		

#### Village Hall News

[cliddesdenhall.org.uk](http://cliddesdenhall.org.uk)  
[facebook.com/CliddesdenVillageHall](https://facebook.com/CliddesdenVillageHall)



#### Chairman's Report October 2024

As the nights draw in and the bookings for certain events reduce, it is good to note that the hall has done well in hosting weddings during this year. In this regard it is always pleasing to receive positive feedback from event organisers, which we have done recently. This complimented the Hall's facilities, grounds, and our ever-helpful support team. The testimonial also advised that attendees were also impressed with the venue and were likely to be the source of future bookings. This augers well, as word of mouth is one of the best forms of advertising.

Work to upgrade the existing Fire Alarm System in the hall is scheduled to start at the end of this month and will upgrade the installation to meet the latest Regulations. We are extremely grateful to Cliddesden Parish Council who have agreed to pay for the cost of these works out of their Community Infrastructure Levy Pot. This contribution will allow the management team to plan further upgrade works to the existing facilities and is much appreciated.

Finally, I have been asked by our ever-creative Cliddesden Players to seek your assistance in helping them create their unique stage sets for each production. Apparently, wallpaper is a major commodity for this exercise. So, if you have overestimated the number of rolls you needed for that job you have just finished, the players would be pleased to take them out of your hands!

Roll on the Panto.

Les Smith, 20<sup>th</sup> September 2024  
 Hall Management Committee  
[www.cliddesdenhall.org.uk](http://www.cliddesdenhall.org.uk)  
[facebook.com/CliddesdenVillageHall](https://facebook.com/CliddesdenVillageHall)  
[LJSChairVH@outlook.com](mailto:LJSChairVH@outlook.com)



Cliddesden WI celebrated their 102<sup>nd</sup> anniversary this September with a wonderful afternoon tea with plenty of sandwiches and cake. Doreen Isley joined in 1968, making her our longest serving member.



The ladies played a game to guess the member from photographs taken before their 10<sup>th</sup> birthday. Diane Rampton was the winner, guessing 9 out of 11 members correctly.

Suzanne, Treasurer reported back that the Crafty Lunchers event held on 27<sup>th</sup> August was enjoyed by members although only raised a small amount for Cliddesden WI after costs.

The Christmas wreath making workshop was a great success in 2023 and we plan to run the event again on Saturday 30<sup>th</sup> November at 10am. An instructor and refreshments will be provided but we ask attendees to bring along their own choice of base (advice available on request), greenery from their garden as we all like to share to ensure a good variety plus any extras eg ribbon etc although there is usually someone happy to share. The cost will be £10 each, you do not need to be a WI member to attend but space is limited. If you would like to add your name to the list please contact Julia Ross at [cliddesdensc@hampshirewi.org.uk](mailto:cliddesdensc@hampshirewi.org.uk).

Thank you

Julia Ross

## Cliddesden, Farleigh Wallop & Ellisfield Horticultural Society

### The three villages Gardening Club

Chairman: Steve Bowcutt, tel: 324707, email: [stephen.bowcut@btinternet.com](mailto:stephen.bowcut@btinternet.com)  
 Secretary: Marilyn Smith, tel: 462584, email: [willow.ms@btinternet.com](mailto:willow.ms@btinternet.com)



Hello from Claire!

Bonfires and golden leaves, hot chocolate and darker evenings. Good excuse to snuggle up and watch a movie?

Not a hope! Before we can rest and relax for the winter we should take advantage of every fine moment to get the garden tidied and sorted. Watch out for hedgehogs heading for hibernation under the cut back vegetation, especially if that vegetation is going to be burnt. With any luck we'll have a few decent frosts this winter to knock back the slugs and bad bugs, saving our young plants from the munching in spring.

The herb for this month, well is it a herb? Or a bulb? Or a vegetable? Widely used in cookery, with other varieties that look stunning, and very useful for keeping pests at bay, garlic is a 'love is or hate it' plant. And while I don't think its benefits as a vampire deterrent will be put to much use, read on for how to keep the greenfly off your roses!

**Garlic:** Botanical name: *Allium sativum*: Family: Alliaceae



So, let's talk varieties.

The culinary garlic you can buy from any grocer can be roasted whole, crushed, chopped, minced, added to sauces, mince, mushrooms.....it's so versatile!

However, when you buy a bulb of garlic you aren't just getting the ingredients for a meal – you're gaining the next seasons bulbs as well.

Separate the individual cloves, use what you need in the kitchen, and plant the

remainder in the garden close to your roses. As companion plants both benefit – the garlic keeps aphids and greenfly at bay, enhances the scent of the rose and keeps it healthy, while the rose provides a good windbreak that protects the garlic.

If you aren't a fan of eating garlic there are the more decorative *Allium* with multicoloured globe heads. These are relatively easy to grown, and come in a range of sizes and colours.

For those who are interested in foraging then late winter/early spring is the time to look out for wild garlic, *Allium ursinum*, whose distinctive smell will lead you unerringly to the shady spots it favours. Both flowers and leaves are edible and make a welcome addition to salads.

There are downsides to garlic, the lingering 'death-breath' being the most well known. It can also cause heartburn, diarrhoea, and gas. However, on the plus side, it can help lower blood pressure and cholesterol, contains vitamins C and B6, and allicin a type of antioxidant. I also have a very good friend who swears by chewing raw garlic when he has a cold. Ok, he washes it down with vodka from the freezer, so I'm not sure which helps more, but he's generally cold-free so I won't argue.

And don't overdo the garlic if you have diabetes or any cardiovascular issues, or even a romantic evening with a partner who ISN'T eating it 😊 .

### What's been happening?

#### Thursday 26th September – Cliddesden Millenium Hall 1930 for 1945 start

*Tim Woodland* – Planting and Growing Winter Bulbs

A return visit from Tim, this time for our winter bulbs instead of summer.

If the last talk was anything to go by, Tim is enthusiastic and well-informed, the bulbs are of good quality and reasonable priced. All in all, well worth coming along.

Due to editorial timings a full report will be in the next issue.

### What's coming up?

#### Thursday 28th November – Cliddesden Millenium Hall 1930 for 1945 start

*AGM and Social Evening*

The year's update, food, wine and quiz.

Need I say more 😊 .

### Would you like to join us?

Keen gardeners, new planters, or 'haven't got a clue!' everyone will receive a warm welcome.

Come along and make new friends, get ideas for your own patch of heaven, and have fun.

Email Seumas Foster at [Seumas@cropfosters.co.uk](mailto:Seumas@cropfosters.co.uk)

Or come along to one of our meetings as a guest, and chat to any of the committee about joining.

See you soon  
Happy gardening!

Claire

**SERVICE TIMES  
AT  
ST. LEONARD'S  
CLIDDESSEN**

SUN 6 <sup>TH</sup> OCT	9.45AM	MORNING PRAYER
SUN 13 <sup>TH</sup> OCT	11.15AM	FAMILY COMMUNION
SUN 20 <sup>TH</sup> OCT	11.15AM	FAMILY SERVICE

# Southlea Trick or Treat!

Thursday, 31<sup>st</sup> October  
6-7pm

Children from the village are invited for Trick or Treating along Southlea.

Please only knock on the houses with a pumpkin outside!



## WORLD SIGHT DAY



# 1.2 billion people need YOUR glasses!



Take your old specs to the

## Basingstoke Lions

Thursday 10th October  
Central Square, Basingstoke --- 9am-3pm  
or to

## Morrisons

7th - 13<sup>th</sup> October



**We can find a home for them!**

**100 Club**



Hello members

The draw for September was called at the yoga class held at the Hall on 19th September 2024. Here are the lucky winners:

1 <sup>st</sup>	Carrie O’Herlihy	288
2 <sup>nd</sup>	Greg Mendelsohn	178
3 <sup>rd</sup>	Diane Rampton	138

Congratulations.

Next Coffee Morning 14th October - come along for coffee, cake and company. Try your hand at table tennis - all equipment provided.

Rose Beevers Tel: 475944  
100club@cliddesdenhall.org.uk



Yes, we now have table tennis available at Coffee Mornings at Cliddesden Millennium Village Hall.

Please come along to have a natter and make new friends, browse the second-hand book stall, select some pretty stationery from Penny our stallholder, and of course enjoy a good cuppa and a slice of cake!

The 100 club is also drawn here each month.

And, if you fancy, have a turn at table tennis. We have all the equipment you will need.

We meet on the second Monday morning of each month, from 10.30 – 12 noon.

Our next date is 15<sup>th</sup> October 2024.

**Hope to see you there, all ages are welcome.**  
Gill (01256 359413)



To further express concerns re the new NPPF proposals, email our MP  
[alex.brewer.mp@parliament.uk](mailto:alex.brewer.mp@parliament.uk)

**NEXT PARISH COUNCIL MEETING**  
 Tues 05 November, 7.30pm Village Hall

## NOTES FROM PARISH COUNCIL MEETING 27 AUGUST

Update from Cllr Paul Harvey (Council Leader) and Cllr Andy Konieczko (Portfolio holder for Strategic Planning and infrastructure) on the Local Plan preparation and the proposed new NPPF and housing figures

- 1 We received 7K responses to the Local Plan Update Regulation 18 consultation – on the policy framework and on individual sites – including from developers, their barristers and planning consultants.  
 The officer team has been working through a huge amount of detail; looking to shape development delivery for the better; had managed to remove further greenfield sites from the Plan including Popham, much by reworking what can be done in Basingstoke town centre without disadvantaging urban communities. Bringing a university to Basingstoke will happen, will put us on the international market for STEM subjects. All was looking positive to reach the final Reg 19 draft plan consultation.
- 2 Then there was the General election. Government now looking to an increase in housing numbers in England of 1.5M over five years.  
 The housing figure for BDBC was 828 dwellings per annum; the intention was to build 700 per annum for the first five years and then re-evaluating upwards to potentially 900 per annum after that. Our housing figure is now 1,194 homes per annum; to achieve that figure over the Plan period would take more than all the sites put forward.
- 3 In addition, the Government proposes in its NPPF consultation to reintroduce the mandatory requirement for a five-year supply of deliverable housing land.
- 4 The officers are talking to KCs; seeking to find a way to continue to examination with our present Plan. The new NPPF proposals do allow Plans at Reg 19 with a shortfall of less than 200 per annum from their new number to continue. If could achieve this... our number would still be 994 instead of 700 per year over the first five years. We have a Plan ready to go as is; will make every effort to challenge the proposals.
- 5 Some LPAs are even more drastically affected; Rushmore's housing figure has tripled and the New Forest's doubled. Though where all the skilled labour will come from to build these numbers?
- 6 Many smaller and medium sized developers are being taken over. The state of the construction industry and investment is the problem; not realistic to think the industry can delivery all these extra houses.
- 7 Developers and land owners won't build out if the result is falling prices. Land with planning consent is being held back; Government is not putting measures in place to address the issues surrounding delivery. Need financial incentives for developers to build out, eg some requirement to pay Council tax on land with planning consent.
- 8 Infrastructure was a problem before; water companies and County Councils are struggling financially. Planning consent can require Grampian clauses as conditions which aim to prevent development going ahead without the required infrastructure.  
 BDBC will be pushing not to take further increases in housing figures without commitment for a new hospital.
- 9 The Government going ahead as presently proposed in the NPPF will lead to a developer free-for-all, a worst outcome for BDBC would be to go back to a situation of not having the required land supply, if five years is again made mandatory.

There is so much that's positive for the borough which should be top of the conversation, rather than all being dominated by the new housing figures. Noting there are positive aspects to the NPPF proposals including Government's ambition to enable more social rented housing.

## PARISH COUNCIL RESPONSE TO NEW NPPF PROPOSALS

The PC response included positive comment but also OPPOSITION to:  
 (Q6) Strengthening the presumption in favour of development;  
 (Q7) reintroducing mandatory five year housing land supply requirements  
 (Q9) reintroducing the 5% buffer  
 (Q16-19) the concept and application of an affordability uplift  
 (Q82) removing the footnote text:  
 "The availability of agricultural land used for food production should be considered, alongside other policies in this Framework, when deciding what sites are most appropriate for development"  
 (Q103) transitional arrangements preventing Reg 18 and most Reg 19 Plans proceeding to examination under current NPPF and housing numbers.

### PARISH PLANNING APPLICATIONS

**24/01881/GPDMA** (Pending 15 Aug) Bluett House. Manor Farm. Application for prior approval of change of use from building used as Class E office to three dwellinghouses within Class C3 use. [Note, application to confirm permitted development criteria is met, not for consultation.]

**24/01500/RET** (Pending 02 August) 21 Southlea. Retrospective change of use of studio to mixed Class C3 residential & Air BnB accommodation.

**24/01393/TDC** (Pending 24 June) Little Acre, Woods Lane. Application for Technical Details Consent for the erection of four new dwellings with associated parking, access and landscaping, in accordance with Permission in Principle 21/01591/PIP.

**24/00617/RET** (Pending 17 June) 1A Millars Cottages, Station Road. Revised parking arrangements and associated landscaping ref 20/00390/FUL (retrospective).

### PARISH TREE APPLICATIONS

**T/00424/24/TCA** (02 Sept) Hill View Farleigh Road. T1 Conifer: Reduce branches overhanging garden back from garden by approximately 3m. T2 Sycamore: Raise canopy over roof to clear back from roof by approx 3m.

### PLANNING APPEALS IN PROGRESS

**APP/H1705/W/24/3350216** (start date 29 Sept) Greenlands Nursery. New dwelling to replace storage /workshop.  
**APP/H1705/W/24/3337500** The Jolly Farmer. A new four-bedroom dwelling.  
**APP/H1705/W/23/3333310** Land South of Myhaven. Erection of 28 new dwellings, demolition Newland Lodge.

## COUNTY COUNCILS NETWORK response to the new NPPF consultation

[www.countycouncilsnetwork.org.uk](http://www.countycouncilsnetwork.org.uk)

Published 27 September 2024

‘Councils which cover county and rural areas warn that their communities face a developer “free for all” and could be left at the mercy of speculative housing development under the Government’s flagship plans to reform the planning system.

‘A new survey from the County Councils Network (CCN) shows that the vast majority of County and Unitary councils do support nationally set targets.

‘However, nine in 10 local authorities surveyed believe these new targets for their areas are excessive. New analysis from the CCN reveals that county and rural areas will see a dramatic increase in the number of houses built under the new mandatory targets. On average, those local authority areas will see a 56% rise in the number of new homes required per year – over 64,000 properties. This is far higher than any other part of the country, and over three times the percentage increase for councils in England’s major cities.

‘County and Unitary councils say they have a chronic lack of infrastructure to cope with a dramatic increase in housing. They are warning that pressure on their local roads, health services, schools and amenities has worsened over the last five years with little guarantee at the moment that the system will be improved to help deliver more infrastructure.

‘With the Government’s proposals effectively watering down the power of Local Plans, nine in 10 councils say they will be at the mercy of speculative development in unsuitable and unpopular places, running the risk of the new system becoming one which “drives a bulldozer through locally-led planning decisions”.

The CCN argues that Government’s proposals are being done in the wrong manner, and ministers should introduce strategic planning before implementing new housebuilding targets, as this would allow councils to better plan for housing and infrastructure in their areas.

‘Cllr Richard Clewer, Housing and Planning Spokesperson for the County Councils Network, said:

*“The County Councils Network’s survey is clear: Councils in rural and county areas are not anti-housing and the vast majority support the principle of nationally set targets. But these targets are excessive... without any commitment to essential road networks, school places, and GP surgeries that will be required.*

*“We don’t have enough infrastructure to cope now, let alone after building a quarter of a million extra homes over the course of this Parliament. We also must remember much of this development in county areas will be in the places with limited or no public transport, compared to the benefits of building in or around cities where there is already good infrastructure.*

*“Worse still, Government’s proposal to re-introduce a five-year land supply drives a bulldozer through locally-agreed housing decisions in our Local Plans and empowers developers. If implemented alongside these dramatic new housing targets, we will see a developer free for all in many county and rural areas, weakening democracy and leading to development in unsuitable locations, regardless of local views.”*

## THE YOUTH COMMISSION – HAVE YOUR SAY

<https://survey.alchemer.eu/s3/90712447/Youth-Commission-Big-Conversation-2024>



The Youth Commission is a diverse group from across Hampshire and the IOW – aged 18-25 – who provide a voice for young people. They gather and present their views at a number of local and national strategic level meetings, attend events, create youth-led campaigns and projects, and help to shape Policing in the area.

**Each year they hold The Big Conversation Survey and then present recommendations to the Police & Crime Commissioner, Hampshire Constabulary and other partners, to support positive change for young people.**

If you are aged 14-25, or are a parent, carer, or work with, or support someone in this age range, please do encourage them to give their views.

## ELECTRIC VEHICLE CHARGING SURVEYS

**BDBC’s EV Charging Strategy Consultation** is open to 5pm on Mon 04 November. Views are being sought on:

- The target to achieve at least one electric vehicle charge point in every ward of the borough
- BDBC’s role in providing EV chargers, including working with the County Council as local highways authority, and with private charging companies
- Gaps in provision in the borough and how best these can be filled, including specific locations.

<https://basp.basingstoke.gov.uk/electric-vehicle-charging-strategy-consultation>

or email [transport@basingstoke.gov.uk](mailto:transport@basingstoke.gov.uk)

**Hampshire County Council** as Local Highway Authority has responsibility for the majority of roads, pavements and streetlights. HCC is beginning a programme to deliver charging infrastructure to support residents who do not have a driveway or garage, and are seeking views on locations that would benefit from a charging point.

[www.hants.gov.uk/transport/electric-vehicles/survey](http://www.hants.gov.uk/transport/electric-vehicles/survey)

## GOVERNMENT’S ‘NEW HOMES ACCELERATOR PROGRAMME’

[www.gov.uk/government/news/new-homes-accelerator-to-unblock-thousands-of-new-homes](http://www.gov.uk/government/news/new-homes-accelerator-to-unblock-thousands-of-new-homes)

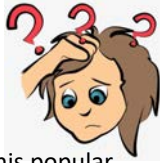
According to a press release issued on 29 August from the Ministry of Housing, Communities and Local Government ‘a new expert group will speed up delivery of stalled housing sites...’.

The focus it seems will be on individual larger sites and on the Planning System:

‘An experienced team from the Ministry of Housing and Homes England will work across government and with local councils to accelerate buildout of housing schemes delayed by planning and red tape to drive economic growth across every part of the country.’

Interestingly the article quotes only David O’Leary, Executive Director of the Home Builders Federation.

## VILLAGE QUIZ NIGHT!



Once again, we shall be hosting this popular fundraising event on **Saturday, 9<sup>th</sup> November, at 7.00 pm.**

It will be held at Cliddesden Millennium Village Hall, for teams of up to 6 people, with all proceeds going to St. Leonard's Church, Cliddesden.

Tickets, priced £15 per person, to include a hot meal and one glass of wine, beer or a soft drink from the licensed bar, will be limited and only on sale until

**Saturday, 2<sup>nd</sup> November** - available from:

Ben Maunder (01256 327859)  
and Val Gofton-Salmond  
(01256 474425 or 07901 674531)



As ever, there will be 6 question rounds, plus table quizzes, and the opportunity to double your points on your favoured round using your Joker ... what's not to like?

**Hope to see you there again!**

## Farleigh Parish Playgroup



Cliddesden Millennium Village Hall

Friday Mornings 11am-12noon Term Time

4<sup>th</sup>, 11<sup>th</sup>, 18<sup>th</sup> & 25<sup>th</sup> October (then half term break)  
8<sup>th</sup>, 15<sup>th</sup>, 22<sup>nd</sup> and 29<sup>th</sup> November

0 - 4 year old and their grown-ups. A warm welcome awaits you and we look forward to you joining us for a fun and happy time

Cost: £3 donation per family

Contact:

**Melanie** Qualified in early years (07833 528040)

**Claire** Qualified teacher (07757 498653)



## Cliddesden WI

Space is limited

But you don't need to be a member

£10



## Christmas Workshop

Come and join our expert to make a wreath or table decoration

**Saturday 30<sup>th</sup> November at 10am to 1pm**  
**At Cliddesden Millennium Hall**

Bring along:

- Your choice of base
- Lots of greenery (to share)
- Your choice of added decorations
- Scissors & Secateurs

We will provide

- Tutor
- Refreshments

Please email

[cliddesdensec@hampshirewi.org.uk](mailto:cliddesdensec@hampshirewi.org.uk)

## CHILDREN'S SINGING GROUP



Join the fun!

Come along, meet new friends, and learn new songs

We meet every Friday during term time starting 7<sup>th</sup> September

3.45pm snack, 4-4.30pm singing

**ST LEONARD'S CHURCH, CLIDDSDEN**

**Social and Entertainment Club**

**Cliddesden Millennium Village Hall**

*'You'll be sure of a warm welcome and a great evening'*

The bar opens at 7.30pm and we start at 8pm. There is an intermission half way through during which ice creams and the bar are available. Admission is only £2 per person.



Thursday 3<sup>rd</sup> October  
**Allelujah**  
 2022, 99 minutes  
 Certificate 12

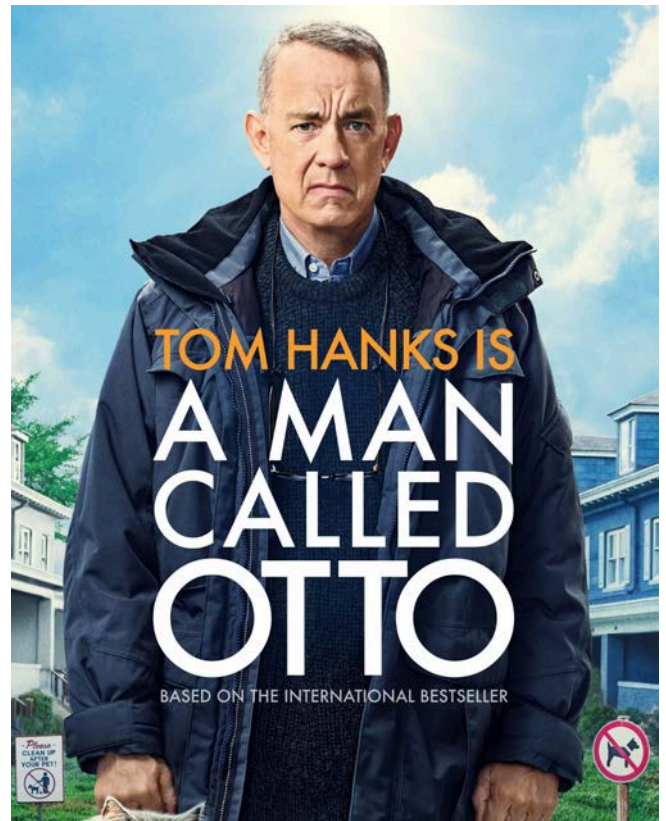
**Allelujah**

The story of a geriatric ward in a small Yorkshire hospital threatened with closure.

Allelujah, the latest film by Richard Eyre, features a who's who of British acting talent.

Starring Jennifer Saunders, Judi Dench and Bally Gill, the comedy-drama, based on the 2018 play of the same name by Alan Bennett, is set in the geriatric ward at The Bethlehem, a small hospital in Wakefield, Yorkshire.

Please come along no matter where you live, bring as many friends and neighbours as you like.



Thursday 7<sup>th</sup> November  
**A Man Called Otto**  
 2022, 126 minutes  
 Certificate 15

**A Man Called Otto**

A Man Called Otto is a 2022 American comedy-drama film directed by Marc Forster starring Tom Hanks.

It is a remake of the 2015 Swedish film A Man Called Ove.

The film stars Tom Hanks in the title role.

Hope to see you there.

*Ted Dowson*  
 edward.dowson@btinternet.com

# VILLAGE DIRECTORY

<b>POLICE</b>	PCSO Andy Jones (Basingstoke Rural South) <i>andrew.jones.13301@hampshire.pnn.police.uk</i>	07775 542 021
<b>NEIGHBOURHOOD WATCH</b>	Simon Barker <i>sibarksy@hotmail.com</i>	07732 100 990
<b>PARISH COUNCIL</b>	<i>www.cliddesdenparishcouncil.info</i> Susan Turner (clerk) <i>clerk.cliddesden@gmail.com</i> Alan Tyler (chairman) <i>alanbtyler19@btinternet.com</i> Bob Randall <i>rarandall9@aol.com</i> Mark Gifford <i>m.gifford1@outlook.com</i> Alison Mosson <i>alison@abe.co.uk</i> Dave Rudge <i>hugh.rudge@gmail.com</i>	07515 777 060 460 425 359 579 07504 104 621 07721 046 146 07813 070 261
<b>TREE WARDEN</b>	Alison Mosson <i>alison@abe.co.uk</i>	07721 046 146
<b>WARD COUNCILLORS</b>	Onnalee Cubitt <i>cllr.onnalee.cubitt@basingstoke.gov.uk</i> Kate Tuck <i>cllr.kate.tuck@basingstoke.gov.uk</i> Sheena Grassi <i>cllr.sheena.grassi@basingstoke.gov.uk</i>	07762 067 411 07762 067 411 07561 060 596
<b>COUNTY COUNCILLOR MEMBER OF PARLIAMENT</b>	Juliet Henderson <i>juliet.henderson@hants.gov.uk</i> Alex Brewer MP <i>alex.brewer.mp@parliament.uk</i> House of Commons, London SW1 AOM	07738 289 849
<b>MILLENNIUM VILLAGE HALL</b>	<i>www.cliddesdenhall.org.uk</i> Leslie Smith (Chairman) 3 <sup>rd</sup> alarm contact Angie Fewster (Vice Chair) 2 <sup>nd</sup> alarm contact Ken Rampton (Caretaker) 1 <sup>st</sup> contact if alarm goes off Pat Rampton (Lettings Secretary) <i>bookings@cliddesdenhall.org.uk</i> Jo Capehorn (Secretary) Julie James (Treasurer)	07973 922 560 475 848 461 034 461 034 07528 856 157 363 753
<b>NEIGHBOURHOOD PLAN</b>	<i>www.cliddesdennp.wixsite.com/cliddesdennp</i>	
<b>CLIDDESSEN COMMUNITY CONSERVATION GROUP</b>	<i>cliddesdenconservation.org</i> Alison Mosson (Chairman) <i>alison@abe.co.uk</i> Angie Fewster (Secretary) <i>angie@fewster.me.uk</i>	07721 046 146 475 848
<b>JOLLY FARMER</b>	<i>thejollyfarmercliddesden.co.uk</i> <i>theJollythai@gmail.com</i>	358 288
<b>CLIDDESSEN PRIMARY SCHOOL</b>	<i>www.cliddesden.hants.sch.uk</i> Kenneth Davies (Headteacher)	321 571
<b>BROWNIES</b>	Sian Banks	333 151
<b>FARLEIGH PLAYGROUP</b>	Claire Nunn Melanie Gill	477 197 07833 528 040
<b>ST LEONARD'S DISTRICT CHURCH COUNCIL</b>	<i>www.farleighcandoverandwield.org.uk</i> Rectory: Vacancy Peter Raine (Church Warden) <i>peter.c.w.raine@btinternet.com</i> Val Gofton-Salmond Julian Nunn	381 221 474 425 477 197
<b>FILM CLUB</b>	Ted Dowson <i>edward.dowson@btinternet.com</i>	817 238
<b>HORTICULTURAL SOCIETY</b>	<i>www.ellisfield.org.uk/hortsoc.html</i> Marilyn Smith	462 584
<b>WOMEN'S INSTITUTE</b>	Janet Fagg (President) <i>jkfagg@gmail.com</i> Pat Rampton (Vice President) Julia Ross (Secretary) <i>jrsidhat@gmail.com</i>	461 034
<b>CLIDDESSEN &amp; FARLEIGH WALLOP EDUCATIONAL TRUST</b>	Vicky Tibble (Secretary & Treasurer) <i>Vicky.tibble@outlook.com</i> By text to: <i>admin@portsmouthstates.co.uk</i>	07552 927 692
<b>AGE CONCERN</b>	The Orchard, White Hart Lane, Basingstoke RG21 4AF <i>reception@ageconcernbasingstoke.freeserve.co.uk</i>	423 874
<b>B/STOKE ASTRONOMICAL SOC</b>	<i>www.basingstokeas.org.uk</i>	
<b>HILL &amp; DALE</b>	Jean Frost (Editor) <i>hillanddaleeditor@gmail.com</i> Ben Maunder (Distributor)	327 859
<b>VILLAGE ARCHIVE</b>	<i>www.cliddesden-archive.uk</i> David Brown <i>dave@cliddesden-archive.uk</i>	
<b>VILLAGE NEWSLETTER</b>	Editor: David Brown Copy date 20th preceding month to: <i>bootofthedailybeast@gmail.com</i>	
<b>CLIDDESSEN CHAT</b>	<i>www.facebook.com/groups/cliddesdenchat</i>	