

In This Issue

The Cliddesden Players summer production	1	Teddy bear's picnic	4
Coffee morning	1	Youth group at St. Leonard's church	4
Village hall news	2	Film club	5
100 Club	2	Parish council pages	6
Service times at St. Leonard's	2	Cliddesden primary school	8
Horticultural society	3	Farleigh parish playgroup	9
The Women's Institute	3	Children's singing group	9
Wine walk	4	Camrose, Gilles, Hackwood & Beggarwood PPG	10
Primary school summer fête	4	Village directory	11



The Cliddesden Players' 2025 Summer Production "Dirty Business"



A comedy written by Emily Golborn

Cliddesden Village Hall – Friday 13th & Saturday 14th June 8pm

Cassandra's laundrette is struggling but she will not talk to her sister Melissa who could help. Fortunately, her cousin Izzy who works there has an idea to help but will it lead to the sisters making up? Cassandra is having a bad day as unexplained accidents keep occurring in the laundrette and customers are not who they seem but she finally learns a family secret that changes everything.

Richard is also having a bad start to his wedding day, he never thought it would involve sitting in a laundrette with his best man. How will he explain events to his bride-to-be? Her rude, posh, stuck-up sister tracks them down and isn't very polite about the premises or understanding about the lads' predicament. Will it all end happily?

Tickets £10

Advance payment is required for Play or BBQ – via cash, cheque or BACS (preferred option) with details given at time of booking.

(Please advise if wheelchair user or mobility difficulties)

Saturday 14th BBQ 6.00 – 7.15pm (burger or hot dog + salads) **£5 per serving.** BBQ token to be issued at check-in desk.

Please state on booking if vegetarian option required. Unfortunately, we cannot offer options to cater for allergies, please advise if there are any concerns. Special requests cannot be made on the day.

Contact: Angie on 01256 475848 or email events@cliddesdenhall.org.uk.

Licensed Premises. We prefer to operate a CASH bar and refreshment service to limit card payment transaction fees.

Refreshments.....Prosecco.....ice creams!

If you can help, even for an hour, with stage set-up the previous weekend 7th-8th June, then please get in contact.

We need further volunteers to cover all the jobs that creating the set involves!

New faces would be most welcome and appreciated.



Please note that due to other village hall requirements it will be necessary to *cancel coffee morning* on these dates:

Monday 9th June

Monday 12th August

Dates remaining in 2025
July 14 th
September 8 th
October 13 th
November 10 th
December 8 th

Please come along to have a natter and make new friends, browse the second-hand book stall, and of course enjoy a good cuppa and a slice of cake!

We meet on the second Monday morning of each month, from 10.30 – 12 noon.

We will meet as usual in July. Hope to see you there!



Gill (01256 359413)

Village Hall News

cliddesdenhall.org.uk

facebook.com/CliddesdenVillageHall



I hope you are all enjoying the fabulous weather we have had over the last 2 months.

Let us hope it continues throughout the summer months, during which we can look forward to this year's Summer Play (13th/14th June), Horticultural Society Summer Show (3rd August) and the Local Art Exhibition (16th August) all hosted at the Hall.

During the last month, the Hall has continued with its maintenance and upgrade work, which includes the installation of a new motorised shutter over the bar servery. This replaced the failing, mechanically operated unit.

Tests have been conducted by Andy Fewster, using alternative LED lighting sources for the Hall. These have proved to be satisfactory. It is therefore proposed to retrofit the new lighting to the Hall during the summer months. This will not only improve running costs but, more significantly, reduce lamp replacement, which is currently very onerous.

Those of you that are attending the Summer Play will, I hope, notice the new skirting around the stage. This is

easy to install and improves the aesthetics of the installation. Thanks go to Darren Capehorn and Chris Sandle for their work on this upgrade and on the fabrication of the storage facility for the new staging.

The new landscaping to the area to the right of the entrance area has commenced, thanks to Marilyn Smith's efforts. This already looks very nice with final planting to be undertaken in the autumn. New curbing around this area is due to take place shortly and this will deliver a symmetrical entrance to the Hall.

On a slightly disappointing note, it is with reluctance that the proposed event on 2nd August to celebrate the Hall's 25 years of operation, is cancelled. This is due to resources beyond our control. It is hoped that a suitable replacement event will take place later in the year.

Leslie J. Smith, 17th May 2025

Hall Management Committee

www.cliddesdenhall.org.uk

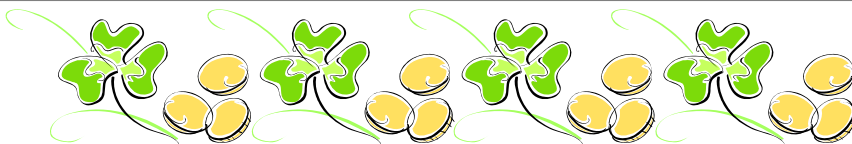
facebook.com/CliddesdenVillageHall

LJSChairVH@outlook.com

facebook



100 Club



Hello members

A big thank you to all who have continued with their membership and welcome to new members. The draw was called at the Coffee Morning held at the Village Hall on 12th May 2025. Here are the lucky winners:

April

1 st	Pat Rampton	76
2 nd	Thomas Barden	84
3 rd	Shelagh Trown	80

May

1 st	Kym Doel	27
2 nd	Vlad Stolojan	155
3 rd	Annie Tuberfield	375

NEW MEMBERS are always welcome – contact me using the details below. Thanks again for everyone's support of the village hall. Next Coffee Morning 14th July – do come along.



Rose Beevers Tel: 475944
100club@cliddesdenhall.org.uk

**SERVICE TIMES
AT
ST. LEONARD'S
CLIDDESSEN**

FOR UP TO DATE SERVICE TIMES, PLEASE SEE:

WWW.FARLEIGHCANDOVERANDWIELD.ORG.UK

Cliddesden, Farleigh Wallop & Ellisfield Horticultural Society

The three villages Gardening Club

Chairman: Seumas Foster tel: 07768443658 email: seumas@cropfosters.co.uk
 Secretary: Marilyn Smith tel: 462584 email: willow.ms@btinternet.com



Everything is growing so quickly now, there isn't enough time to do all the jobs that need to be done, but we have had good weather with lots of sunny days. The lack of rain is a problem and may become an even bigger problem as water butts run out.

Our **Plant Sale** went very well, there were lots of plants and seedlings donated to give visitors plenty of choice. A huge thanks to everyone who helped, bought plants, donated and made this event a success.

Our **'Stretching for Gardeners' with Jacqui Matthews** on May 20th is eagerly anticipated! Jacqui is well known to all of us for her Yoga classes.

Our next meeting is on **May 29th** when **Mark Hinsley is talking about 'Trees in the Garden'**, and his talk will be based around questions

about trees from the audience, so if you want to know which trees he recommends, or how to prune your trees, or any other questions you have bring them along.

Mark is an Arboriculturist providing advice about trees to, for example, gardeners and planners. Trees are a massive part of our heritage and history. Understanding an individual tree's place is important for the Arboriculturist if our historic landscapes are to be recognised and protected.

Garden Visit in June

On June 12th we are visiting the Japanese garden that Gordon Bowyer has created at his home in Fleet. (Details /directions to follow.) Gordon spoke to us last year, so this meeting is our follow up to see the garden he told us so enthusiastically about last year.

Guests, as ever, are welcome so do bring a friend or neighbour if you know someone who would be interested.

RHS Membership

The Society has membership of the RHS so we have a membership card which can be used by members, so if you are planning to visit Wisley, Kew or any of the many gardens linked to the RHS you can use the card to get a discount, such as 2 for 1 entry.

Ask our Secretary Marilyn for details at willow.ms@btinternet.com

P.S. As a 'heads up' for our **July meeting**, the title is **'Dry Gardening and Herbs'** which could give us plenty to think about for our plant choices next year. Details to follow.

Seumas Foster

theWI
INSPIRING WOMEN

CLIDDESSEN

It was with great sadness that we began our meeting with a minute's silence for our friend and longest serving member Doreen Isley, who has sadly passed away. Our thoughts go to her family.

April and May meetings have focussed upon our future, with dwindling membership it was thought that we might not continue but we are very pleased to welcome new members Monica, Caroline, Jenny and Lisa.

We have a packed program for the coming year including an afternoon tea in September to celebrate

our 103rd birthday. Cliddesden WI being one of the oldest Wis in the UK. The WI was formed in 1915. We continue to welcome new members.

We have a speaker, Alan Jones for our next meeting on Monday 16th June at 10:30 who will entertain us with Tales of a Roving BBC reporter.

Julia Ross

ST LEONARD'S CLIDDESSEN:**WINE****WALK**5th July 2025

IN RECOGNITION OF ALL THINGS ITALIAN
WITH WELCOMING HOSTS ACROSS THE
VILLAGE
FROM 7.30 PM UNTIL LATE (12ish)
Tickets £12 each available from:



Miche Donaldson
Nicki Barnes
Ben Maunder

475721
07889 236175
327859



In aid of church funds

FRIENDS OF CLIDDESSEN PRIMARY

**£1 ADULTS
KIDS GO FREE**

Summer fete

12PM - 3PM

**SATURDAY
5TH JULY**

**TRADITIONAL FETE GAMES
BBQ & BEER STALLS
RAFFLE
TOMBOLA
2ND HAND UNIFORM
AND MUCH MORE!**

**CLIDDESSEN PRIMARY SCHOOL
RG25 2QU**

FRIENDSOFCLIDDESSEN@GMAIL.COM

Teddy Bear's Picnic

Friday 13th June, 11am-12.00pm
St Leonard's Church, Cliddesden



Join us in the beautiful churchyard for craft, songs and cake.
Bring your own picnic and don't forget your Teddy Bear!



YOUTH GROUP

YEARS 5-8 (AGES 9-13)

**RUNS 2ND SUNDAY OF THE MONTH
12-1.30PM
ST LEONARD'S CHURCH, CLIDDESSEN**

Next session 8th June

Kids can enjoy a variety of activities
such as den-building, drama productions,
games and sporty challenges.

**Contact:
Claire Nunn, 07757 498653**

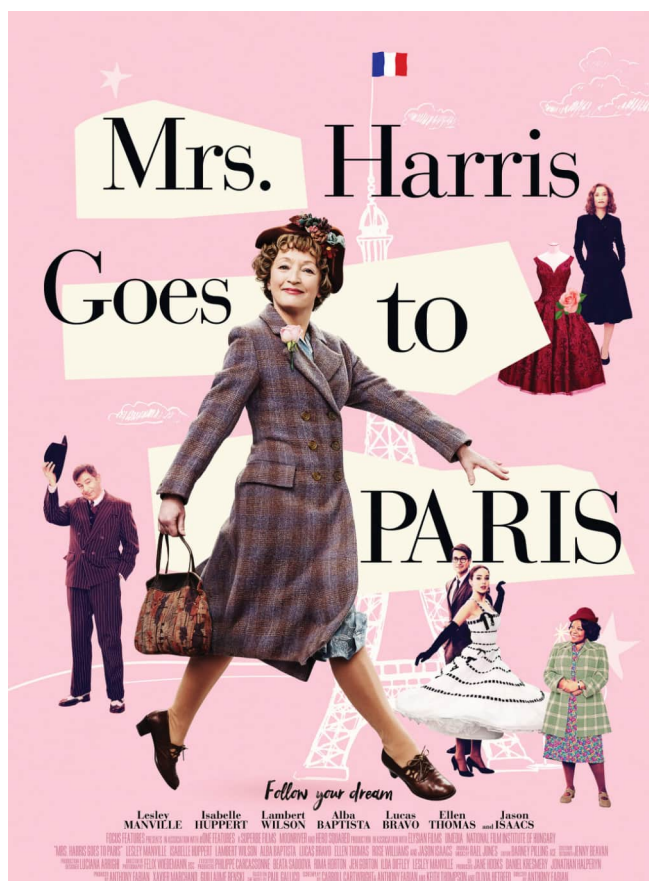
Social and Entertainment Club

Cliddesden Millennium Village Hall

'You'll be sure of a warm welcome and a great evening'

The bar opens at 7.30pm and we start at 8pm. There is an intermission half way through during which refreshments and drinks at the bar are available at very low prices.

Admission is only £2 per person. Please note we work on a cash only basis.



Thursday 5th June

Mrs Harris Goes To Paris

2022, 115 minutes

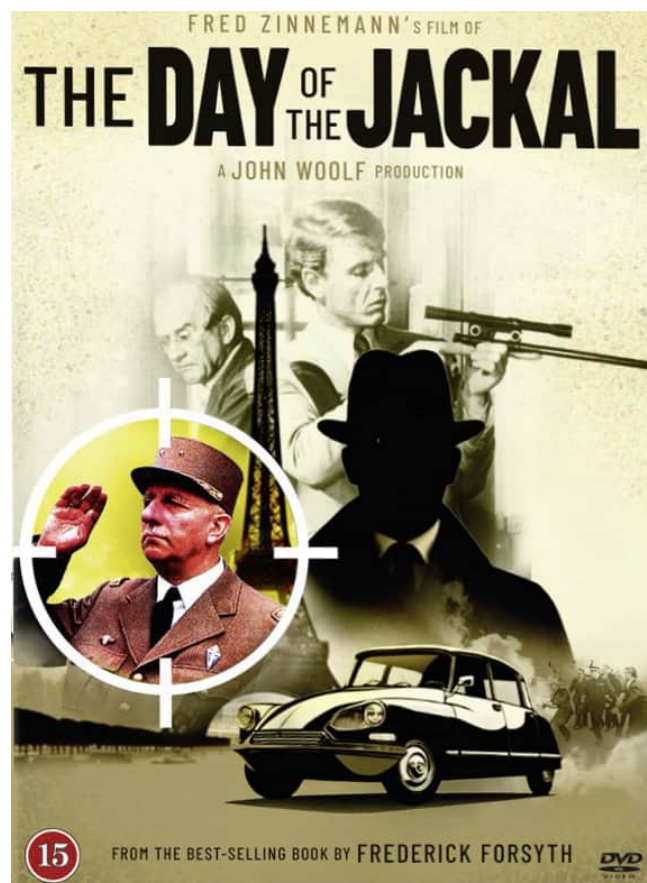
Certificate PG

In 1950's London a widowed cleaning lady falls madly in love with a couture Dior dress, deciding she must have one. She embarks on an adventure to Paris that will change not only her own outlook – but the very future of the House of Dior.

Starring Lesley Manville, Isabelle Hubbert, Lambert Wilson, Alba Baptista, Lucas Bravo, Ellen Thomas and Jason Isaacs

In June we will celebrate 20 years of running the Film Club in Cliddesden. Originally started by Shirley Maunder and Godfrey Thomas, who are sadly no longer with us, it has endured and still brings a lot of pleasure to the regular attendees. Please feel free to come along no matter where you live, bring as many friends and neighbours as you like. You will be most welcome.

We hope to see you there.



Thursday 3rd July

The Day Of The Jackal

1973, 137 minutes

Certificate 15

Based on a Frederick Forsyth best selling novel it tells the story of the plot to kill General Charles de Gaulle by a British assassin hired by the French OAS.

Starring Edward Fox, Michael Lonsdale, Olga George-Picot, Delphine Seyrig, Adien Cayla-Legrand and Michael Auclair.



THE NEXT PARISH COUNCIL MEETING WILL BE ON TUESDAY 24 JUNE

a week earlier than the usual date
7.30pm in the Village Hall meeting room.

NOTES FROM THE MAY PARISH COUNCIL AGM

Present – Parish councillors and clerk; Village Hall chairman, Ward Cllrs Onnalee Cubitt and Sheena Grassi; five members of public.

Chairman Alan Tyler re-elected as chairman for the coming year.

The Parish Council continues with Cllrs Alan Tyler, Mark Gifford, Alison Mosson, Bob Randall, Dave Rudge.

Thank to all the above for their work throughout the preceding year.

Finance – Accounts and audit forms agreed and signed. Year End 2024/25 balance of £45,017.88 comprises £14,917.03 Parish Council funds and £30,100.85 of CIL (community infrastructure levy) funding

Devolution – Public consultation on devolution – Cllr Cubitt termed this a ‘nonsultation’; Government is going ahead anyway. Power will be vested in the mayor of ‘Hants & Solent’ for all strategic decision-making.

Local Government Reorganisation will be picked up in detail by Council Leader, Cllr Paul Harvey, at the Parish Assembly. Onnalee noted that HCC are keen to see one ultra-large unitary encompassing the majority of the present county council area – ie swallowing all borough council

resources. Which would be catastrophic for us.

Re NPPF and housing numbers

Point raised regarding reality gap between the planning numbers and provision of – or lack of – infrastructure, particularly water supply and foul water disposal.

Onnalee noted the new housing figure equates to over 21K by 2042 (with ‘buffers’ / penalties, the figure looks more like 23K). To talk on this further at the Parish Assembly.

This is why, Onnalee says, she is so obsessed with water infrastructure; raw sewage is now being pumped into the Loddon for an average of 2.5 hours per day, c 11% of the time.

Planning – BDBC enforcement

officer has confirmed that The Firs on Hackwood Lane (just inside the Winslade boundary) will shortly be submitting a retrospective planning application for recent development on agricultural land.

Moto MSA, new proposal for J6 The Parish Council will continue to add its voice to the many objection responses.

Parish Assembly – all residents of Cliddesden and of neighbouring parishes are encouraged to attend.

PARISH PLANNING APPLICATIONS

25/01215/PIP (Validated 19 May) Land North Of Woods. Application for Permission in Principle for the erection of 4 detached single dwellings and associated access

25/01198/HSE (Validated 14 May) Crockley House Farleigh Road. Proposed rear extension to garage (part retrospective).

25/00808/HSE (Validated 31 March) Netherfield, Farleigh Road. Re-construction of side extension, change of external materials, new roof dormer, new car-port, widening driveway and alterations to doors and windows. Repairs to render, external redecoration and change of colour of windows.

25/00501/LBC (Grant 07 May) Manor Farmhouse. Replacement of four windows to South elevation.

24/02778/FUL (Pending 03 Dec) Land South Of Farleigh Road. Change of use of agricultural land to use for exercising of dogs, including perimeter fence, pathway, shelter and vehicle access and parking.

24/02689/RET (Pending 25 Nov) Appleyard, Woods Lane. Variation of Con 1 (plans) of 20/01098/FUL (four new dwellings with associated parking and access) to amend the approved width of the access road.

24/02430/RET (Pending 12 Nov) 1 Chapel Walk. Change of use from garage to ancillary accommodation and external works (retrospective).

24/01393/TDC (Scheduled DC 11 June) Little Acre, Woods Lane. Technical Details Consent for four new dwellings with parking, access and landscaping, in accordance with Permission in Principle 21/01591/PIP.

24/00617/RET (Pending 17 June) 1A Millars Cottages, Station Road. Revised parking arrangements and associated landscaping ref 20/00390/FUL (retrospective).

PARISH TREE APPLICATIONS

T/00250/25/TPO (Validated 14 May) The Black Barn. T1 Horse Chestnut – 15% canopy thin and localised reduction by up to 2m of SW aspect.

T/00203/25/TCA (Approve 15 May) St Leonards Church. Two Yew trees: crown lift to no more than 4m. One Sycamore: reduce to hedge height.

LOCAL GOVERNMENT REORGANISATION (LGR) – UNITARY COUNCIL PROPOSALS

Hampshire councils submitted a joint ‘Interim Submission’ to Government for its 21 March deadline for initial proposals on Unitary organisation.

Governments’s response to this Interim Submission, dated 07 May, is now posted on the Hampshire County Council website

www.hants.gov.uk/aboutthecouncil/governmentinhampshire/future-hampshire-solent/local-government-reorganisation

The response refuses the request for a time extension to November for submitted proposals. It says that...

‘For the final proposals, each council can submit a single proposal for which there must be a clear single option and geography and, as set out in the guidance, we expect this to be for the area as a whole...’

BDBC continues to be clear on its preferred option for four mainland unitaries, with a ‘Northern Hampshire’ Unitary comprising BDBC, Hart District Council and Rushmoor Borough Council.

Timescales

- 26th September 2025 for full proposals on Unitary organisation across the area of ‘Hampshire & the Solent Combined County Authority’.
- May 2027 – Shadow elections for new Unitary Councils.
- May 2028 – New Unitary Councils take over.

RIGHTS OF OUR RIVERS (CHALK STREAMS)

Extracts from Motion to Full Council of 15 May from Ward Cllr Kate Tuck.

'Our globally rare and ecologically fragile chalk streams are exceptionally vulnerable to over-abstraction and habitat degradation, given numerous pressures from unabated pollution and accelerating urbanisation.

'There is broad consensus among nature NGOs including The Wildlife Trusts and the World Wildlife Fund that the rarity and ecological significance of these streams should earn them a special protected status.

'With only 14% of UK rivers in good ecological health and 0% in good chemical health, it is clear that our environmental laws and regulations need urgent revision.

'Consultation with residents of the Borough has revealed significant concern about the increasing pressures of over-abstraction, wastewater pollution and road-runoff which degrade local rivers.

'While degradation of these waterways continues, there is hope in an emerging global movement of governments recognising Rights of Nature, in particular Rights of Rivers.

'The Universal Declaration of River Rights establishes that all rivers shall possess, at minimum, the following fundamental rights:

- 1 The right to flow,
- 2 The right to perform essential functions within the river's ecosystem
- 3 The right to be free from pollution
- 4 The right to feed and be fed by sustainable aquifers
- 5 The right to native biodiversity
- 6 The right to regeneration and restoration.'

Cllr David Conquest from Kingsclere seconded the motion... 'Over abstraction from increased development and excessive water use is reducing water levels, pollution is killing our rivers, endangered habitats are being lost... It might seem idealistic to give a river rights or to call it alive. But to consider the alternative... it's all too easy to picture a dead river, no fish, birds or other wildlife...no plants to filter or clean it... if we can call a river dead then we can call it alive too, and if it's alive then surely it has rights.'

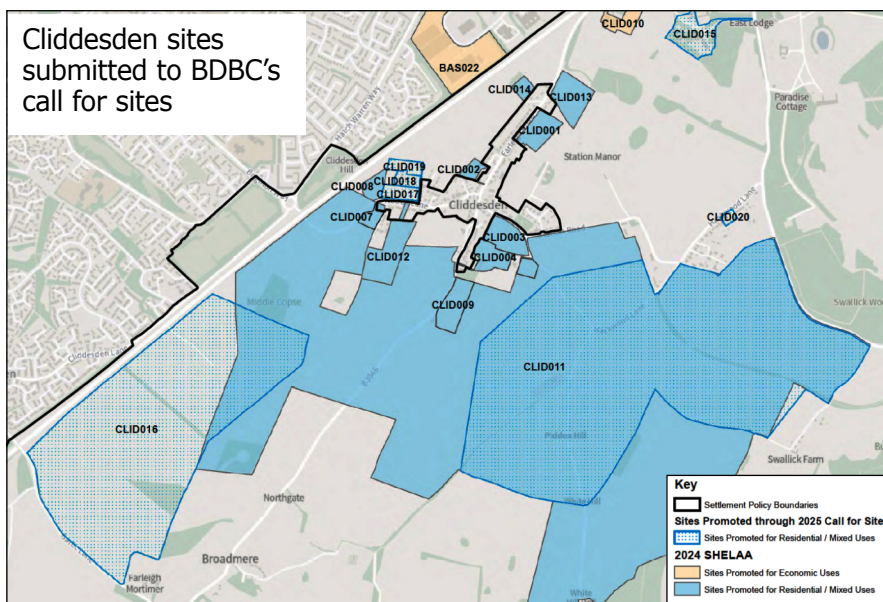
The motion detailed recommendations to Cabinet and was supported unanimously bar one abstention. See <https://democracy.basingstoke.gov.uk> or view Council meeting on YouTube

BDBC CALL FOR SITES

Following Government's December NPPF (National Planning Policy Framework) and the imposed increase in housing numbers, BDBC issued a new 'call for sites'. A full list of submitted sites is now published on the BDBC website – including those previously published and new sites added.

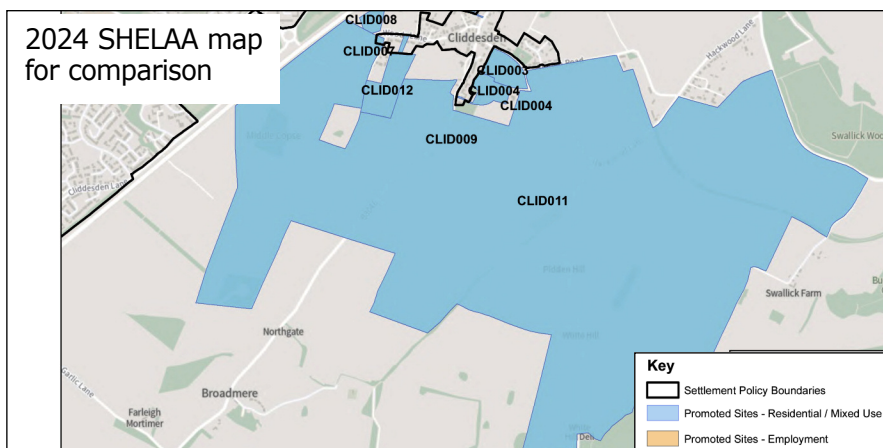
www.basingstoke.gov.uk/cfs-2025-publication

All sites will be evaluated by officers and considered by Cabinet as to whether they will be included in the new Reg 18 Consultation in Autumn.



Note the new boundary line of the re-promoted CLID011 Upper Swallick, and addition of CLID016 Land South of Hatch Warren

CLID001	Land east of Farleigh Road	2.02	Residential	SHELAA 2024
CLID002	Land to the rear of the Mount	0.68	Residential	SHELAA 2024
CLID003	Land at Church Lane	2.33	Residential	SHELAA 2024
CLID004	Land to rear of Manor Farm	2.48	Residential	SHELAA 2024
CLID007	Land south of Woods Lane	0.65	Residential	SHELAA 2024
CLID008	Land north of Woods Lane	1.08	Residential	SHELAA 2024
CLID009	Land south of Manor Farm	2.44	Residential	SHELAA 2024
CLID010	Pensdell Farm	1.52	Employment	SHELAA 2024
CLID011	Upper Swallick	131.06	Residential (including mixed uses)	Re-promotion
CLID012	Land to the South of Myhaven	3.98	Residential	SHELAA 2024
CLID013	Land north of Bramble Bank	2.87	Residential	SHELAA 2024
CLID014	Land off Southlea	0.62	Residential	SHELAA 2024
CLID015	Land at Audleys Wood	3.36	Residential (including mixed uses)	New promotion
CLID016	Land South of Hatch Warren	79.37	Residential (including mixed uses)	New promotion
CLID017	Land north of Woods Lane (site 1)	1.03	Residential	New promotion
CLID018	Hillfield, Woods Lane	0.76	Residential	New promotion
CLID019	Land north of Woods Lane (site 3)	0.96	Residential	New promotion
CLID020	Land Adj to 14 Hackwood Lane	0.32	Residential	New promotion



Maps: Crown copy and database rights 2025 Ordnance Survey Licence No 100019356

Cliddesden Primary School



Year 3/4 Football Update...

Our Year 3 and 4 football team were jubilant on Friday 2nd May when they had another match against St Marks. This time they were victors after losing against the same team in March. It was a tight game with St Mark's scoring the first goal. Cliddesden equalised soon after and scored another through a penalty. St Mark's equalised but in the last few minutes Cliddesden made it 3-2. The whole team played really well and well done to Franco who scored a hat-trick.

Rugby League Update...

The final meeting of the Norman League began with only two points separating St John's in first place and Kempshott in last place. Cliddesden won their game against St John's but lost to North Waltham and Kempshott. With a couple of key players missing we knew it was going to be challenging. The biggest surprise was Kempshott winning all 3 of their games and being crowned league winners. The two top teams finished on the same points but with Kempshott scoring more tries in the competition. We gained the same points as St John's but finished below them on tries scored. Despite finishing bottom, the effort was there from all the squad and they did the school proud as ever.



To make sure we made the week as supportive and as pleasant as possible for the children, we started each day with a special breakfast and ended the week with a fun trip out. The weather was kind and we began the afternoon at Knights Realm Adventure Golf. In four groups, the children navigated the course overcoming the obstacles in the way to complete it. This was followed by a picnic in the park and then onto Hollywood Bowl.



We had a lovely day commemorating **VE Day**. The children dressed in red, white and blue and learned about why we mark this day as a nation and also about how people celebrated the end of WWII. In the afternoon the children played nostalgic games on the field and enjoyed delicious scones and jam. We were thrilled to be joined by lots of family and friends.

Well done to our Year 6 children for completing their SATs. They all worked incredibly hard and focused well.



The children were a credit to their school and they demonstrated our school ethos and values throughout the week.

On Wednesday 14th May Chestnut Class travelled to Sea City Museum, Southampton as part of our Titanic History work. Our tour guide Immy, shared many stories from the Titanic and the links to Southampton. After the tour, the children split into four groups and completed activities in a workshop. Firstly, they looked at artefacts to decide what and how they were used, then decoded morse code messages sent from the Titanic, next they decided who should a space in a lifeboat and why. Lastly, they investigated how the water tight doors on the

Titanic failed using an ice cube tray. After a quick lunch the children were given a worksheet and went back into the museum to find different items and who they belonged to. A fantastic trip to support the children's learning.



Please visit our website: Cliddesden.hants.sch.uk to find out more about our school.

Paula Lavender

Farleigh Parish Playgroup



Cliddesden Millennium Village Hall

Friday Mornings 11am-12noon Term Time

6th, 13th (Teddy Bear's picnic at St Leonard's) & 27th June.
4th & 11th July. Sorry, we will be closed on 20th June.

0 - 4 year old and their grown-ups. A warm welcome awaits you and we look forward to you joining us for a fun and happy time

Cost: £3 donation per family

Contact:

Melanie Qualified in early years (07833 528040)

Claire Qualified teacher (07757 498653)



CHILDREN'S SINGING GROUP



Come along, meet new friends, and learn new Songs

We meet every Friday during term time
3.45pm snack, 4-4.30pm singing

ST LEONARD'S CHURCH, CLIDDESSEN



The PPG Website www.cghppg.weebly.com has the online version of this news with more information and web links. There is also a 'Self Help A-Z' of Health and Wellbeing, fast track treatment options, support signposting and local contacts. Our Email is: cghb.surgeryppg@btinternet.com

May 2025 Newsletter

Phone and Continuity of Care Improvements

From Monday 12th May 2025, the practice is improving their phone system to cut waiting times and improve continuity of care. When phoning the practice on the CGH or Beggarwood phone numbers, you will be able to choose options to reach the right team. Every patient will be contacted by through Medical Apps, text or a letter and be told who their named GP is and which team they work in. Please make a note this. Use this information to select the option for your personal admin team when you next call the practice. Where possible appointments will be made with your named GP or one of their team. Patients have the right to ask for an appointment with a specific GP, but it is likely to be quicker accepting an available appointment within the team.

You will hear 8 options when you call:

1. Prescription queries
 2. Medical referrals
 3. Medical reports
 4. To let us know a patient has passed away
 5. St Andrews / Yellow Team
 6. Essex House / Orange Team
 7. Beggarwood / Pink Team
 8. Gillies / Blue, Green, or Purple Team
- For options 5–8 (appointments), you'll then choose
- Press 1 – Urgent appointment
 - Press 2 – Routine appointment
 - Press 3 – General enquiries

Don't worry if you make a mistake which is likely to happen as we all get used to the new system. The person you speak to will help get you to the right team

Detecting Bowel Cancer early can save your life!

Dr Christine Glew, who works at Gillies Health Centre and also for the Wessex Cancer Alliance says:

"I'm working on a new project to help people access their bowel screening kits. Did you know if you have bowel cancer and it is picked up at screening, it is much more likely to be at the earlier stages and therefore more easily treated with much better outcomes and survival rates."

If you are aged between 50 and 74 you'll be invited to take part in bowel cancer screening every 2 years. Test Kits are sent to your home, for you to provide a small sample of your poo for testing. If you have not returned a sample or think your test is due and haven't received a kit simply ring **0800 707 6060** to request that a new kit is sent to you.

Disability Awareness Day

Basingstoke & Disability Forum will be hosting **Disability Awareness Day (DAD) on 27th June 2025, between 9am to 4pm at The Malls Shopping Centre, Basingstoke.**

Information, support and advice on disability related subjects will be available from local organisations, businesses and government departments.

Come along to find out about services and opportunities for people affected by any type of disability, and how you can get involved.

Volunteers needed for Viables Memory Club.

Fridays 10am - 12:30 or 12:30-3pm at the Viables Community Centre.

The memory club is looking for volunteers to assist in helping members engage in and access planned activities. All members have memory loss, dementia or other cognitive impairment so the volunteer will need to be patient, able to communicate clearly and effectively and treat others with compassion and kindness. For more information please email beth@viables.org.uk

REGISTERED GPs AND TEAMS

All patients have a 'named responsible GP' at the practice who work within a team. The team of clinicians are site based. We will always try to book you in with your registered GP first to promote continuity of care.

Failing this, they will book you in with another GP within your registered team. You are still able to request to see another GP if you would like.

Green Team:

Dr J Dixon
Dr R Gray
Dr R Walker
Dr C Glew

Blue Team:

Dr G Franklin
Dr A Carnegie
Dr K Webster
Dr B Budhathoki

Purple Team:

Dr S Longley
Dr A Robertson
Dr N Lizinde
Dr L Carney
Dr J Mukadam

Orange Team:

Dr G Ambrose
Dr F Berkelaar
Dr R Radhakrishnan
Dr N Evans

Pink Team:

Dr M Longley
Dr J Hubbard
Dr V Radha
Dr A Amin
Dr M Sudhakar

Yellow Team:

Dr S Scammell
Dr N Ezech
Dr R Parker
Dr L Wilson
Dr S St George

Carers Support

There will be an unpaid carers support 'drop in' at St Andrews Surgery between 10am and 2 pm, on Tuesday 24th June 25.

It is open to all and some patients will also receive text invites from the practice. PPG advisors and Princess Royal Trust for Carers staff will be present to provide information and discuss individual issues.

The Practice complaints process

See the practice website or send a letter to The Manager at Gillies Health Centre or email: hiowicb-hsi.cghpartnership.complaints@nhs.net

VILLAGE DIRECTORY

POLICE	PCSO Andy Jones (Basingstoke Rural South) <i>andrew.jones.13301@hampshire.pnn.police.uk</i>	07775 542 021
NEIGHBOURHOOD WATCH	Simon Barker <i>sibarksy@hotmail.com</i>	07732 100 990
PARISH COUNCIL	<i>www.cliddesdenparishcouncil.gov.uk</i> Susan Turner (clerk) <i>clerk.cliddesden@gmail.com</i> Alan Tyler (chairman) <i>alanbtyler19@btinternet.com</i> Bob Randall <i>rarandall9@aol.com</i> Mark Gifford <i>m.gifford1@outlook.com</i> Alison Mosson <i>alison@abe.co.uk</i> Dave Rudge <i>hugh.rudge@gmail.com</i>	07515 777 060 460 425 359 579 07504 104 621 07721 046 146 07813 070 261
TREE WARDEN	Alison Mosson <i>alison@abe.co.uk</i>	07721 046 146
WARD COUNCILLORS	Onnalee Cubitt <i>cllr.onnalee.cubitt@basingstoke.gov.uk</i> Kate Tuck <i>cllr.kate.tuck@basingstoke.gov.uk</i> Sheena Grassi <i>cllr.sheena.grassi@basingstoke.gov.uk</i>	07762 067 411 07762 067 411 07561 060 596
COUNTY COUNCILLOR MEMBER OF PARLIAMENT	Juliet Henderson <i>juliet.henderson@hants.gov.uk</i> Alex Brewer MP <i>alex.brewer.mp@parliament.uk</i> House of Commons, London SW1 AOM	07738 289 849
MILLENNIUM VILLAGE HALL	<i>www.cliddesdenhall.org.uk</i> Leslie Smith (Chairman) 3 rd alarm contact Angie Fewster (Vice Chair) 2 nd alarm contact Ken Rampton (Caretaker) 1 st contact if alarm goes off Pat Rampton (Lettings Secretary) <i>bookings@cliddesdenhall.org.uk</i> Jo Capehorn (Secretary) Julie James (Treasurer)	07973 922 560 475 848 461 034 461 034 07528 856 157 363 753
NEIGHBOURHOOD PLAN	<i>www.cliddesdennp.wixsite.com/cliddesdennp</i>	
CLIDDESSEN COMMUNITY CONSERVATION GROUP	<i>cliddesdenconservation.org</i> Alison Mosson (Chairman) <i>alison@abe.co.uk</i> Angie Fewster (Secretary) <i>angie@fewster.me.uk</i>	07721 046 146 475 848
JOLLY FARMER	<i>thejollyfarmercliddesden.co.uk</i> <i>theJollythai@gmail.com</i>	358 288
CLIDDESSEN PRIMARY SCHOOL	<i>www.cliddesden.hants.sch.uk</i> Kenneth Davies (Headteacher)	321 571
BROWNIES	Sian Banks	333 151
FARLEIGH PLAYGROUP	Claire Nunn Melanie Gill	477 197 07833 528 040
ST LEONARD'S DISTRICT CHURCH COUNCIL	<i>www.farleighcandoverandwield.org.uk</i> Rectory: Vacancy Peter Raine (Church Warden) <i>peter.c.w.raine@btinternet.com</i> Val Gofton-Salmond Julian Nunn	381 221 474 425 477 197
FILM CLUB	Diane Rampton <i>dianerampton@btinternet.com</i>	467 533
HORTICULTURAL SOCIETY	<i>www.ellisfield.org.uk/hortsoc.html</i> Marilyn Smith	462 584
WOMEN'S INSTITUTE	Janet Fagg (President) <i>jkfagg@gmail.com</i> Pat Rampton (Vice President) Julia Ross (Secretary) <i>cliddesdenssec@hampshirewi.org.uk</i>	461 034
CLIDDESSEN & FARLEIGH WALLOP EDUCATIONAL TRUST	Vicky Tibble (Secretary & Treasurer) <i>Vicky.tibble@outlook.com</i> By text to: <i>admin@portsmouthstates.co.uk</i>	07552 927 692
AGE CONCERN	The Orchard, White Hart Lane, Basingstoke RG21 4AF <i>reception@ageconcernbasingstoke.freemove.co.uk</i>	423 874
B/STOKE ASTRONOMICAL SOC	<i>www.basingstokeas.org.uk</i>	
HILL & DALE	Jean Frost (Editor) <i>hillanddaleeditor@gmail.com</i> Ben Maunder (Distributor)	327 859
VILLAGE ARCHIVE	<i>www.cliddesden-archive.uk</i> David Brown <i>dave@cliddesden-archive.uk</i>	
VILLAGE NEWSLETTER	Editor: David Brown Copy date 20th preceding month to: <i>bootofthedailybeast@gmail.com</i>	
CLIDDESSEN CHAT	<i>www.facebook.com/groups/cliddesdenchat</i>	

The Cliddesden Players Present

Tickets
£10



DIRTY BUSINESS

Comedy written by
Emily Golborn

Fri 13 & Sat 14 June 8.00pm

Cliddesden Village Hall

Sat 14 June, BBQ from 6pm - 7.15pm, £5 per serving

Licensed Premises • Cash Bar • Refreshments

For tickets call Angie on 01256 475848 or email events@cliddesdenhall.org.uk