

In This Issue

North Hampshire repair café.....	1
Village quiz night	1
Service times at St. Leonard's Cliddesden	1
Coffee morning.....	1
Village hall birthday party	2
Village hall news	3
100 Club	3
The Women's Institute	4
Film club	5
Parish council pages	6
Cliddesden primary school.....	8
World sight day in October.....	10
Youth group.....	11
Harvest family service	11
Farleigh parish playgroup	11
Children's singing group	11
Village directory	12

Saturday, 8th November - Save The Date!

St Leonard's Church Village Quiz Night

Cliddesden Millennium Village Hall



+



This is just a short "heads-up" about the annual "heads-down" event for teams of up to 6. Full details in the next Cliddesden Village Newsletter and Hill & Dale.

North Hampshire Repair Cafe



Coming to:
Cliddesden Village Hall
25th October: 10am till 1pm

We repair most household stuff, including:

- Electrical products
- Computers
- Furniture, indoor and garden
- Sewing, clothing and textiles
- Teddies and toys
- Knives and garden tools sharpening
- Jewellery, necklaces, etc
- Bicycles

For more information and booking see:
- our Website - www.NHRC.uk
- Facebook.com/northhampshirerepaircafe

Part of the RepairCafe.org global network.
Supported by HCC, BDBC, Hart Rotary & others

SERVICE TIMES AT ST. LEONARD'S CLIDDESSEN

SUN 7 TH SEP	9.45AM	MORNING PRAYER
SUN 14 TH SEP	11.15AM	FAMILY COMMUNION & BAPTISM
SUN 21 ST SEP	11.15AM	HARVEST FESTIVAL



September 8 th
October 13 th
November 10 th
December 8 th

Please come along to have a natter and make new friends, browse the second-hand book stall, and of course enjoy a good cuppa and a slice of cake!

The 100 club is also drawn here each month.

We have table tennis available and all the equipment you will need if you fancy a game.

We meet on the second Monday morning of each month, from 10.30 – 12 noon.

Hope to see you there, all ages are welcome.

Gill (01256 359413)





Come and join
CLIDDSDEN VILLAGE HALL

for their

25th BIRTHDAY PARTY

Tickets
£10
includes a free
drink & cake

Saturday 4 October
8pm Doors and
bar 7.30pm

With live music from
sound intentions

Contact
Jo on **07528 856157** or
events@cliddesdenhall.org.uk

Church Lane, Cliddesden,
Basingstoke, RG25 2JQ

The poster features a purple background with colorful confetti and musical notes. On the left, a hand holds a glass of red wine. On the right, a hand holds a large chocolate cake decorated with pink frosting, white swirls, blue oval candies, and red cherries. Five lit candles are on top of the cake. The Cliddesden Village Hall logo, featuring a tree and a building, is at the top center.

Village Hall News

cliddesdenhall.org.uk

facebook.com/CliddesdenVillageHall



The Hall reopened on Saturday 16th August after a two week shut down for refurbishment work.

The opening coincided with the commencement of the two day Hampshire Open Studios Local Art Exhibition and the formal opening of Mary Thomas's formal garden, by her sons Dominic and Alistair. Both events were very well attended, and were a reflection of the special community spirit in the village.

At the time of writing the refurbishment works have just been completed, which comprised of remedial works to the Hall and Meeting Room Floor, new fit out works to the Ladies and Gents Toilets and revarnishing of the Annex elevations.

I am pleased to say that all of the works have been favourably received by attendees to the above events, and that the upgrades demonstrate the Trustees commitment to maintain one of our exceptional assets

to the highest possible standard.

Special thanks are due, in particular, to the Parish Council who have paid for the floor refurbishment works and to Neil Egginton and his superb installation team. They have worked so hard to achieve what was always going to be a very tight programme, which involved very long hours on site to deliver a high quality installation. They have been an absolute pleasure to work with.

If you haven't seen the upgrades yet I would like to invite you to attend a Hall's 25th Birthday Celebrations on Saturday 4th October, (see below) and we hope to see you there.

Leslie J. Smith, 20th August 2025
Hall Management Committee
www.cliddesdenhall.org.uk
facebook.com/CliddesdenVillageHall
LJChairVH@outlook.com



Cliddesden Village Hall's 25th Birthday Celebration!

We hope you can join us on Saturday 4th October to dance the night away to a live band and drink a toast to our wonderful Village Hall reaching the grand age of 25 years!

The Hall was built on the site of disused allotments with the land kindly donated by the Earl of Portsmouth and the Trustees of the Portsmouth Settled Estate.

It was a Millennium Project supported by funds from the National Lottery with partnership funding from Hampshire County Council, B & D Borough Council and Cliddesden Parish Council.

The access road from Church Lane was dug out in 1998, the land was cleared and footings and foundations were

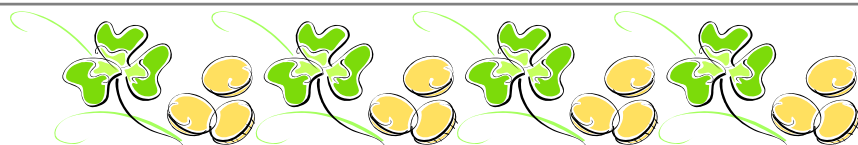
begun that year. On 13th June 1999 the Grand Opening took place and gradually the Hall has grown over the years to support a busy and vibrant community facility.

We have groups, classes, social activities and private hires nearly every day of the week which keeps the Trustees, volunteers and staff extremely busy making sure that the Hall is kept clean and well maintained.

So come and celebrate with us and toast to the next 25 years of Cliddesden Village Hall!

Trustees of Cliddesden Village Hall

100 Club



Hello members

As Cliddesden Village Hall is closed for refurbishment the draw for August was called at the Yoga Class held at Ellisfield Village Hall on 7th August 2025.

Here are the winners:

1 st	Robert McGregor	407
2 nd	Sarina Smith	373
3 rd	Don Vernon	2

Congratulations.

Next Coffee Morning 8th September - come along for good coffee, cakes and company.

Rose Beevers Tel: 475944
100club@cliddesdenhall.org.uk



CLIDDESSEN

In **July** we welcomed Susan Waldron who came along to tell us about her jewellery making, which she had been doing for the last 23 years.

She started by explaining what equipment is required to begin working with beads. There are 10 basic tools required: 3 different types of pliers, a cutter, scissors, stoppers, wire/elastic, beading mat and a teaspoon for collecting up all the dropped beads. Which there are many!

Sue explained that she buys her beads mostly on-line although another good place to get them is from charity shops, where she buys necklaces and dismantles them to get the beads to reuse.

After Sue had finished her talk members were able to have a go and make a bracelet or a pair of earrings.

Members enjoyed making their items, many saying "it was nice to mingle around the tables looking for beads and having a good chat."

Our next meeting is on **Tuesday 16th September, 2pm** and it is our Birthday! Our speaker is Johnathan Woodhouse - Saxophonist and stories as an Army Musician.

Caroline Poulter

As **August** is usually a quiet meeting, we decided to take the opportunity to try a 'Jigsaws and Snacks' morning. Tables were set up with a puzzle box in the middle and members were invited to work together and see how far they could get. There was lively discussion about the best way to begin - straight sides and corners were the most popular starting point, with other members sorting the remaining pieces into colour groups. We managed to complete some sides and small sections of the middle of the puzzles, but maybe 500 pieces was too much of a challenge with 3-4 people working on each one, for an hour and a half. The chatter was accompanied by the smell of sausage and cheese rolls cooking in the kitchen. These also proved a delicious distraction from concentrating on the puzzles!

The idea of having a meeting where members could have a relaxed chat was very successful.

Suzanne



Social and Entertainment Club

Cliddesden Millennium Village Hall

'You'll be sure of a warm welcome and a great evening'

The bar opens at 7.30pm and we start at 8pm. There is an intermission half way through during which refreshments and drinks at the bar are available at very low prices.

Admission is only £2 per person. Please note we work on a cash only basis.



Thursday 4th September
The Great Escaper
 2023, 92 minutes
 Certificate 12

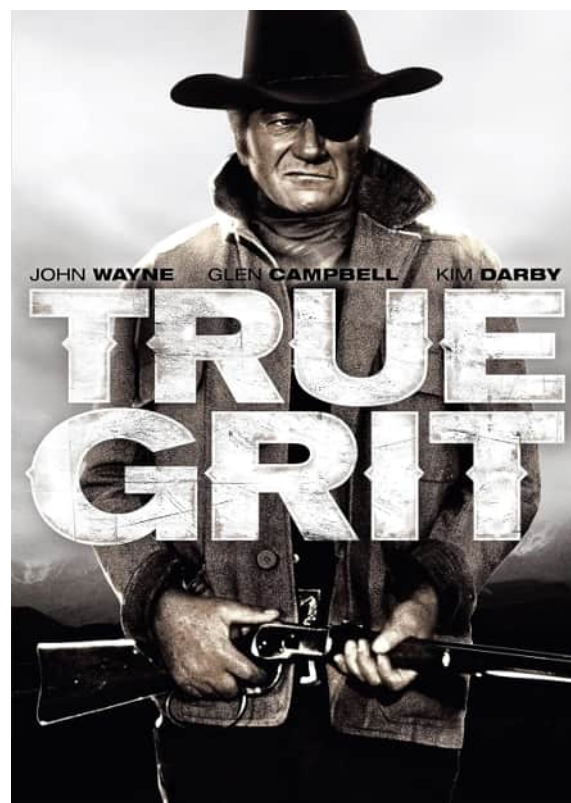
In the summer of 2014, Bernard Jordan (Michael Caine) made global headlines. He had staged a 'great escape' from his care home to join fellow war veterans on a beach in Normandy, commemorating their fallen comrades at the D-Day Landings 70th anniversary.

It is a story that captured the imagination of the world as Bernie embodied the defiant, "can-do" spirit of a generation that was fast disappearing. But, of course, it wasn't the whole story. It was an inspirational but sanitised retelling of one man's need to come to terms with the lasting trauma of war.

Starring Michael Caine, Glenda Jackson, John Standing, Laura Marcus, Jackie Clune and Wolf Kahler.

Please note we work on a cash only basis.

Everybody welcome from wherever you live. We hope to see you there.



Thursday 2nd October
True Grit
 1969, 123 minutes
 Certificate PG

Farm girl Mattie Ross sets out to capture the man who murdered her father, Tom Chaney. She hires tough US Marshall 'Rooster' Cogburn. They are joined by Texas Ranger La Boeuf who wants to find the killer for his own purposes.

Starring John Wayne, Glen Campbell, Kim Darby, Robert Duvall, Dennis Hopper and Jeff Corey.

Diane Rampton
dianerampton@btinternet.com



NEXT PARISH COUNCIL MEETING TUESDAY 02 SEPTEMBER 7.30pm

Village Hall meeting room
everyone welcome

NOTES FROM JULY'S PARISH COUNCIL MEETING

Meeting date 29 July (rescheduled).

Present Parish Councillors, Clerk and 12 members of the public.

New housing Most people attending because of concerns regarding Upper Swallick – following comments from BDBC Councillors at the May Parish Assembly that due to increase housing numbers all sites are now back on the table.

The Chairman said major development won't go unopposed. STaNHd has long been compiling evidence and data relating to environment and infrastructure. In any eventuality it will be a long time before Upper Swallick can achieve the planning consents and infrastructure needed.

Plus our Neighbourhood Plan is a valuable tool which gives some elements of control over development. Aim has to be to minimise impact on the Village.

Yes, at the moment, the lack of five-year land supply makes opposing unsuitable housing more challenging; as does in some cases the outstanding Policy SS5 allocation; yes, every landowner thinks it's the best time to apply; but landscape and heritage policies also still apply; BDBC (and Inspectors) are still refusing some applications.

The Firs, Winslade Discussion and comments – 'Strongly opposed to the strategy of developing first and applying for retrospective planning permission only when required to do so... Bypassing scrutiny and public engagement... The people who are doing this have lawyers who have done this before – and in some cases successfully... Development continues despite BDBC requirement to stop – as with widening the entrance and installing new gates... In Planning terms BDBC does have a shortfall in provision for traveller site; but there are Planning arguments against this site... The Planning process won't be a quick one... Only minimal information so far submitted.'

Bob Randall Although a Parish Councillor for only a short time, Bob was an important member of the team and will be greatly missed

Review of Parish Assembly A successful event with c75 people

including from neighbouring Parishes. This however a sign of local disquiet – concerns regarding the returning potential for major development. Council leaders spoke well; best we can do at present is make provision for people to be kept informed

Local Government reorganisation

As featured in the August *Newsletter* it is for everyone to respond to Consultations [now ended]. Each one of the 15 first and second tier Councils involved has to submit – to Government by 26 September – a proposal for Unitary Councils for all Hampshire (ie the area within the new Hampshire and the Solent Combined County Authority). BDBC has an 'Extraordinary' Full Council meeting on 25 September.

Planning A recent influx of planning applications – responses submitted to all applications where concerns raised, or if for new development.

Speed indicator Device (SID) data for the six months to June reveal that not much has changed; this time not really a trend one way or another. Data for the previous six months to December 2024 indicated gradual overall increases in speed. There are the same occasional 70mph driver(s) in Farleigh Road. To continue to send SID data to Hampshire Police and Crime Commissioner Donna Jones.

Parish Council meetings Government to amend legislation to allow remote and hybrid meetings; no timescales.

MP surgery recently held by Alex Brewer in the Jolly Farmer was well received. Reported that she spoke well and it was appreciated she made the effort to come. However the online information link said by appointment and then that the meeting full; but 12 people attended including two from Winslade.

Alex Brewer MP can be contacted via email and will respond.

alex.brewer.mp@parliament.uk

PARISH COUNCILLOR VACANCY

Cliddesden Parish Council is allocated five Parish Councillors and has one vacancy.

Expressions of interest please to clerk.cliddesden@gmail.com, or contact any parish councillor.

PARISH PLANNING APPLICATIONS

25/01995/LDEU (Validated 13 Aug) 14A Hackwood Lane. Certificate of lawfulness for the existing use as a Class C3 dwelling.

25/01468/FUL (Validated 06 August) Land At Station Road. Erection of replacement mechanic workshop (B2 Industrial Use).

25/01597/HSE (Pending 10 July) Three Horseshoes, Woods Lane. Replace render on exterior walls with render insulation system; remove chimney stack; replace windows & doors; replace tarmac driveway with resin driveway.

25/01544/PIP (Refused 08 August) Land South Of Woods. Application for Permission in Principle for the erection of up to four dwellings.

25/01476/OUT (Pending 13 June) Land West Of Millars, Station Road. Outline application for four dwellings with some matters reserved (appearance and landscaping).

25/01313/OUT (Pending 27 May) Land North of Bramble Bank. Farleigh Road. Outline application, with all matters reserved save for access, for up to 17 dwellings with access, parking, drainage works, open space, landscaping and associated infrastructure.

25/01198/HSE (Pending 14 May, Amended description 08 August) Crockley House, Farleigh Road. Proposed rear extension to garage garden (part retrospective) and erection of gazebo to rear garden.

cont...

LOCAL PLAN UPDATE – BDBC has published the first draft of its Spatial Strategy for the new Local Plan. The Spatial Strategy forms the bulk of the *Public Reports Pack* for consideration by the Environment & Infrastructure Committee meeting of Thurs 04 Sept. See documents for the meeting at:

<https://democracy.basingstoke.gov.uk/ieListDocuments.aspx?MIId=2756&x=1>

PARISH PLANNING**APPLICATIONS** *continued...*

25/00808/HSE (Pending 31 March)
Netherfield, Farleigh Road. Re-construction of side extension, new external materials, new roof dormer, new car-port, widening driveway, alterations to doors, windows. Repairs to render, external redecoration and change colour of windows.

24/02778/FUL (Pending 03 Dec)
Land South of Farleigh Rd. Change of use of agricultural land to use for exercising dogs, including perimeter fence, pathway, shelter, vehicle access and parking.

24/02689/RET (Pending 25 Nov)
Appleyard, Woods Lane. Variation of Condition 1 (plans) of 20/01098/FUL (four new dwellings with associated parking and access) to amend the approved width of the access road.

24/00617/RET (Pending 17 June)
1A Millars Cottages, Station Road. Revised parking arrangements and associated landscaping, ref 20/00390/FUL (retrospective).

APPEAL IN PROGRESS

APP/H1705/W/25/3371018 (Start date 18 August) Land North of Woods. Application for Permission in Principle for the erection of four detached single dwellings and associated access

WINSLADE APPLICATIONS

25/01235/FUL (Pending 01 July)
The Firs, Alton Road. Material Change of Use of Land to a use of Gypsy/Traveller site comprising two pitches with the siting of one Mobile Home, one Touring Caravan, and one Dayroom per pitch, and alteration of access onto the A339 (part Retrospective).

25/00200/LBC (Pending 06 Feb) and **25/00199/FUL** (Pending 28 May)
Hackwood Park. Conversion from residential use to hotel and ancillary hotel use.

ELECTORAL REGISTER www.basingstoke.gov.uk/canvass

A guide to the household canvass for 2025

From August to November, BDBC conducts its annual canvass of properties within the borough.

This is to ensure the Electoral Register is accurate and up to date. A revised register will be published on 01 December 2025.

The Electoral Registration Officer (ERO) is required to follow the process as set out in law.

How the process works...**STEP 1 DATA MATCHING**

In July, the Electoral Register was sent to the Department for Work and Pensions (DWP) to be matched against their records. The name and address of each elector is verified against National Insurance databases and information held by DWP. The ERO has the discretion to use local data (such as Council Tax) to perform a matching exercise.

If all the registered electors at a property can be matched, the property will be assigned to 'Route 1' canvass.

If there are any electors at a property who cannot be matched, or the property is empty, the property will be assigned to 'Route 2' canvass.

('Route 3' canvass is for care homes, nursing homes and other properties with a duty manager.)

STEP 2 CONTACTING YOU**'Route 1' Canvass**

For Route 1, if you've registered an email address with BDBC Electoral Services, on 19 August you will have received an email with a link to your property details on the 'household response' website.

The email will include two security codes, needed along with your postcode, to access the site. You can

respond online up to 10 September to confirm or change the details BDBC hold for the property. But if you add a new person to the property, they must complete their own registration. They can register to vote online at the Government website or call BDBC, 01256 845467.

If you have received an email but not responded online by 10 Sept, a paper form will be automatically generated. If BDBC doesn't hold your email address, they will as a matter of course send a paper form with the current elector details listed. All paper forms for Route 1 will be dispatched on 22 September.

If the information on the hard copy form is correct, you don't need to do anything more. To make changes, use the security codes on the form to access the household response website (as procedure outlined above for email contact) – or complete the paper form and return it to Electoral Services, Civic Offices, London Road, Basingstoke RG21 4AH.

STEP 2: CONTACTING YOU**'Route 2' Canvass**

For those on the 'Route 2' canvass there isn't an option to receive the form via email. You'll receive a form in the post – dispatched by BDBC on 27 August – with steps to follow as for Route 1 above.

Again you can respond online at www.householdresponse.com/basingstoke or complete and return the paper form. To note, the return envelopes will be addressed to BDBC partners Civic Election Services, London, N81 1ER.

For 'Route 2' canvass you need to respond even if there are no changes. If you've not submitted a response by 22 September, a reminder letter and form will be sent on 30 September. You then have until 15 October to reply.

For any forms still outstanding, BDBC 'Canvassers' will visit at some time between 17 October and 28 November – they will have a clear Basingstoke & Deane ID badge. There is then the option to respond online or directly to the Canvasser.

It is a legal requirement for properties in Route 2 to respond to the annual canvass.

HAMPSHIRE COUNTY COUNCIL – reporting Highway problems

www.hants.gov.uk/transport/roadmaintenance/roadproblems/potholes
www.hants.gov.uk/transport/roadmaintenance/roadproblems/treehedge
www.hants.gov.uk/transport/roadmaintenance/roadproblems/flooding
www.hants.gov.uk/transport/roadmaintenance/roadproblems/paving
www.hants.gov.uk/landplanningandenvironment/rightsofway/reportaproblem

On reporting an issue, you'll receive a confirmation email with a reference number. If you could also forward this to the Parish Council, it helps keep us in the loop, and we can follow up (via County Cllr Juliet Henderson) where that might help. clerk.cliddesden@gmail.com

Cliddesden Primary School



As always, it was a busy end of year for the children at school:

Oak Class enjoyed a fascinating trip to the Mayflower Theatre in Southampton. We were met by Silve and Holly who were our guides for the morning.

We enjoyed listening to the history of the theatre, which was built in 1928 and was originally named The Empire Theatre. It was bought in 1950 and re-named The Gaumont. Southampton County Council bought the theatre in 1986 and there was a public enquiry to prevent it becoming a bingo hall. It re-opened as The Mayflower Theatre in 1987. We also learnt that the theatre could seat 2,271 people in the auditorium and present productions including musicals, dance, opera, ballet and comedy.

Our backstage tour included the wardrobe and the laundry area. We were amazed to find out that each costume has to be washed and ironed after every show. Sometimes there is only 1.5 hours to achieve this before the next show starts. Imagine how many costumes that is for the large productions!



We moved on to the wings where the performers congregate before they are due on stage. This is also where all the microphones are managed from including sound checks. Although it was a sizeable space, we tried to imagine what it would be like if a large show was running and performers were on and off stage and having costume changes. This area was also the loading bay where travelling productions would drop off all the staging and costumes for their shows. The Lion King had 22 trucks!

We moved onto the main stage where we looked out to the auditorium in awe. It seemed enormous and could only imagine how the performers feel when the seats are full.

We were fortunate to be able to go into a large dressing room where we found out that the performers need bright lighting in this area to mirror the bright lights on

stage. Performers would wear very heavy make up to be seen and so not to look washed out by the lighting.

The fly rig is the highest point in the theatre and this is where a crew of 'fliers' control the backdrops. Each is controlled by a manual lever which has a sticker on to tell the fliers how far down to drop the scenery.

It was incredible to think of all the things going on in the wings and up on the fly rig during a performance. How quiet, fast and focused everyone need to be from performers to backstage staff.

Our interesting tour came to an end and we moved on to our workshop with Silve and Jess. After a warm up with Jess, we had fun mimicking animal noises and movements. This led to us learning our own moves to 'I like to Move It' from Madagascar.



Willow and Beech Classes went to Birdworld on their educational visit.

All the children had an amazing day, learning lots of new facts about birds. They enjoyed seeing the birds they had been finding out facts about up close.

Our highlights were the Humboldt penguins feeding. They were so fast under the water and even beat a cheeky wild grey heron to their favourite silverfish. We were also the first visitors to see a penguin chick which was only 3 weeks old.

We also loved the pelicans. They were fantastic at catching fish in their pouches. We could see the fish in the pouch and watch the pelican tip it down its beak! The Australian pelicans were amazing at gliding across the water. They looked like they were skiing on water.

The flamingos were so pink! We learnt all about them and their knobbly backwards knees - which are actually their ankles! The children listened so well and learnt so much during our visit.

Our visit showed how many different and colourful birds there are in the world and how we can help them thrive in their habitats.

Children, family and friends all had a huge amount of fun at our Sports Day.



Once again, we were blessed with fine weather to make all the events and spectating more fun. We thank Dan Du-Heaume and Brighton Hill Community School for the use of their premises, their sports leaders and helping us organise the event. All the children competed their best and congratulations to our winners: Farleigh House.

- 1st** Farleigh House
- 2nd** Hackwood House
- 3rd** Winslade House
- 4th** Ellisfield House



Our Boys Football Team played in The South Basingstoke Schools League Tournament. The competition was tough but our team played really well and finished in 3rd place. We lost our first two games against Chalk Ridge and St John's, both by a single goal. We then went on to beat Fairfields 2-1 and finished with a 0-0 draw with old rivals North Waltham. Well done to all the boys in the team.



Our field was transformed into a vibrant hub of laughter, games, and community spirit for our annual Summer Fete.

From the moment the gates opened, excitement was in the air as children and their family and friends explored the different stalls and enjoyed the BBQ and coffee shop.

An incredible £1450 raised to benefit the pupils at school.



Our two Rock 2 the Beat bands: The Slightly Awkward Potatoes performed Stand by me and Metallica 2.0 entertained us with Shotgun. Watching their performance skills progress and their self confidence grow has been a real treat.

Oak Class treated us to a performance of, 'Robin and the Sherwood Hoodies', a very amusing tale based the legend of Robin Hood. All the children performed brilliantly and the audience thoroughly enjoyed the show. Well done Oak Class for giving a truly entertaining end of year production.



Our Year 6 pupils left us to continue their onward journey to secondary school We gave them a good send-off including a very special graduation assembly where we celebrated the children's individual achievements as well as those they achieved as a class. We all wish them well for the next step in education.

To find out more about our school please visit our website: Cliddesden.hants.sch.uk.

Paula Lavender

WORLD SIGHT DAY


1.2 billion people
need YOUR glasses!


Take your old specs
to the
Basingstoke Lions
Thursday 9th October
Central Square, Basingstoke --- 9am-3pm
or to

Morrisons
6th - 12th October


We can find a home for them!

Over 2 million people in the UK are living with sight loss
43 million people in the world are blind

1.2 billion people need glasses to see better

World Sight Day, now in its 13th consecutive year, comes once again to a stand in Central Square, Basingstoke – between Primark and Costa - on **Thursday, 9th October**, courtesy of **The Basingstoke Lions Club** and featuring a collection point for redundant spectacles of any description, together with a display of information regarding sight loss and small items of equipment to help the visually impaired with some of the practical aspects of daily living.

The unwanted spectacles find new life in some form, e.g. 'gold' rims melted down and vintage/designer pairs sold on. The remainder are then sent to Medico France in Le Havre where they are cleaned and graded, ready for use in eye camps in Africa, India and Eastern Europe.

In addition, a spectacle collection point will be available in **Morrisons Supermarket** from **Monday 6th - Sunday 12th October**, for those who might find that more convenient.

Spectacles are the most common and least expensive method of correcting refractive errors, the largest cause of vision loss. But globally, more than half of those requiring, for example, near-vision spectacles cannot access them due to factors such as poverty, isolation, poor availability, poor access to eye health facilities and lack of awareness.

On a global scale, the aim of this day, on which Lions Clubs around the world conduct various sight-related projects, is to focus attention on the universal issue of avoidable blindness and visual impairment and thus raise awareness about the importance of eye health and the need for quality eye care services for all.

Basingstoke Lions Club is delighted to be able to offer this service once more to the community. **Your spectacles need not languish in a drawer – please, bring them to us!**

Contact: av@mypostoffice.co.uk



YOUTH GROUP

YEARS 5-8 (AGES 9-13)

RUNS 2ND SUNDAY OF THE MONTH
12-1.30PM
ST LEONARD'S CHURCH, CLIDDESSEN

New term starts 14th September!

Kids can enjoy a variety of activities such as den-building, drama productions, games and sporty challenges.

Contact:
Claire Nunn, 07757 498653

Harvest Family Service

21st September at 11.15am
St Leonard's Church, Cliddesden



Donations of non-perishables for the Basingstoke Food Bank would be very gratefully received. After the service there will be refreshments as part of our harvest celebration.

Farleigh Parish Playgroup



Cliddesden Millennium Village Hall

Friday Mornings 11am-12noon Term Time

Welcome back to playgroup!

12th, 19th and 26th (Macmillan coffee morning) September
3rd, 10th, 17th and 24th October (closed on 31st for half term)

0 - 4 year old and their grown-ups. A warm welcome awaits you and we look forward to you joining us for a fun and happy time

Cost: £3 donation per family

Contact:

Melanie: Qualified in early years (07833 528040)

Claire: Qualified teacher (07757 498653)



CHILDREN'S SINGING GROUP



The start of the school year is a great time to try something new!
Come along this September, we will be learning new songs.

We meet every Friday during term time
3.45pm snack, 4-4.30pm singing

ST LEONARD'S CHURCH, CLIDDESSEN

VILLAGE DIRECTORY

POLICE	PCSO Andy Jones (Basingstoke Rural South) <i>andrew.jones.13301@hampshire.pnn.police.uk</i>	07775 542 021
NEIGHBOURHOOD WATCH	Simon Barker <i>sibarksy@hotmail.com</i>	07732 100 990
PARISH COUNCIL	<i>www.cliddesdenparishcouncil.info</i> Susan Turner (clerk) <i>clerk.cliddesden@gmail.com</i> Alan Tyler (chairman) <i>alanbtyler19@btinternet.com</i> Mark Gifford <i>m.gifford1@outlook.com</i> Alison Mosson <i>alison@abe.co.uk</i> Dave Rudge <i>hugh.rudge@gmail.com</i>	07515 777 060 460 425 07504 104 621 07721 046 146 07813 070 261
TREE WARDEN	Alison Mosson <i>alison@abe.co.uk</i>	07721 046 146
WARD COUNCILLORS	Onnalee Cubitt <i>cllr.onnalee.cubitt@basingstoke.gov.uk</i> Kate Tuck <i>cllr.kate.tuck@basingstoke.gov.uk</i> Sheena Grassi <i>cllr.sheena.grassi@basingstoke.gov.uk</i>	07762 067 411 07762 067 411 07561 060 596
COUNTY COUNCILLOR MEMBER OF PARLIAMENT	Juliet Henderson <i>juliet.henderson@hants.gov.uk</i> Alex Brewer MP <i>alex.brewer.mp@parliament.uk</i> House of Commons, London SW1 AOM	07738 289 849
MILLENNIUM VILLAGE HALL	<i>www.cliddesdenhall.org.uk</i> Leslie Smith (Chairman) 3 rd alarm contact Angie Fewster (Vice Chair) 2 nd alarm contact Ken Rampton (Caretaker) 1 st contact if alarm goes off Pat Rampton (Lettings Secretary) <i>bookings@cliddesdenhall.org.uk</i> Jo Capehorn (Secretary) Julie James (Treasurer)	07973 922 560 475 848 461 034 461 034 07528 856 157 363 753
NEIGHBOURHOOD PLAN	<i>www.cliddesdennp.wixsite.com/cliddesdennp</i>	
CLIDDESSEN COMMUNITY CONSERVATION GROUP	<i>cliddesdenconservation.org</i> Alison Mosson (Chairman) <i>alison@abe.co.uk</i> Angie Fewster (Secretary) <i>angie@fewster.me.uk</i>	07721 046 146 475 848
JOLLY FARMER	<i>thejollyfarmercliddesden.co.uk</i> <i>theJollythai@gmail.com</i>	358 288
CLIDDESSEN PRIMARY SCHOOL	<i>www.cliddesden.hants.sch.uk</i> Kenneth Davies (Headteacher)	321 571
BROWNIES	Sian Banks	333 151
FARLEIGH PLAYGROUP	Claire Nunn Melanie Gill	477 197 07833 528 040
ST LEONARD'S DISTRICT CHURCH COUNCIL	<i>www.farleighcandoverandwield.org.uk</i> Rectory: Vacancy Peter Raine (Church Warden) <i>peter.c.w.raine@btinternet.com</i> Val Gofton-Salmond Julian Nunn	381 221 474 425 477 197
FILM CLUB	Diane Rampton <i>dianerampton@btinternet.com</i>	467 533
HORTICULTURAL SOCIETY	<i>www.ellisfield.org.uk/hortsoc.html</i> Marilyn Smith	462 584
WOMEN'S INSTITUTE	Janet Fagg (President) <i>jkfagg@gmail.com</i> Pat Rampton (Vice President) Julia Ross (Secretary) <i>cliddesdenssec@hampshirewi.org.uk</i>	461 034
CLIDDESSEN & FARLEIGH WALLOP EDUCATIONAL TRUST	Vicky Tibble (Secretary & Treasurer) <i>Vicky.tibble@outlook.com</i> By text to: <i>admin@portsmouthestates.co.uk</i>	07552 927 692
AGE CONCERN	The Orchard, White Hart Lane, Basingstoke RG21 4AF <i>reception@ageconcernbasingstoke.freemove.co.uk</i>	423 874
B/STOKE ASTRONOMICAL SOC	<i>www.basingstokeas.org.uk</i>	
HILL & DALE	Jean Frost (Editor) <i>hillanddaleeditor@gmail.com</i> Ben Maunder (Distributor)	327 859
VILLAGE ARCHIVE	<i>www.cliddesden-archive.uk</i> David Brown <i>dave@cliddesden-archive.uk</i>	
VILLAGE NEWSLETTER	Editor: David Brown Copy date 20th preceding month to: <i>bootofthedailybeast@gmail.com</i>	
CLIDDESSEN CHAT	<i>www.facebook.com/groups/cliddesdenchat</i>	