

### In This Issue

Village hall news.....	1	Film club .....	5
St Leonard's village quiz night .....	1	St Leonard's service times.....	5
100 Club winners.....	1	Parish council pages.....	6
Horticultural society.....	2	Cliddesden Primary School.....	8
Camelot The Panto.....	3	Farleigh parish playgroup.....	9
St Leonard's Community Thank You.....	3	Children's singing group.....	9
Coffee morning.....	3	Remembrance Sunday Service .....	9
The Women's Institute .....	4	Camrose, Gilles, Hackwood & Beggarwood PPG .....	10
Christmas Fayre .....	4	Village directory .....	11

### Village Hall News

[cliddesdenhall.org.uk](http://cliddesdenhall.org.uk)  
[facebook.com/CliddesdenVillageHall](https://facebook.com/CliddesdenVillageHall)



### Chairman's Report November 2024

I am pleased to report that the Trustees have agreed to install a defibrillator in the village hall to provide additional first aid support to that already provided by the Hall at its organised events. The defibrillator will also be available for use by other parties using the hall. This facility has been arranged by Julia Ross and has been part funded by the Hall and by our Local Councillors, Onnalee Cubitt, Kate Tuck, and Sheena Grassi via the current year's Councillors Community Grant Scheme. Our thanks go to all of the above who have made this possible.

The month has seen the delivery of additional demountable staging which will first be used at this year's Pantomime. This should greatly simplify the construction and dismantling of the stage and make its use more accessible for letting events.

Many of you, attending the hall, may have noticed the transmitter trailer and radio antenna installed in the car park. This is a temporary arrangement with Messrs. Bauer Media. The installation provides the transmission of Greatest Hits Radio to the Basingstoke area and will remain in place until a permanent site in the area is complete. I am pleased to advise that Bauer are making a financial contribution to the hall as part of this arrangement, which will assist future funding of improvements.

A positive month in many respects.

Les Smith, 21<sup>st</sup> October 2024

Hall Management Committee

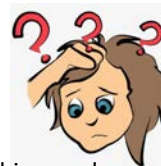
[www.cliddesdenhall.org.uk](http://www.cliddesdenhall.org.uk)

[facebook.com/CliddesdenVillageHall](https://facebook.com/CliddesdenVillageHall)

[LJChairVH@outlook.com](mailto:LJChairVH@outlook.com)



## VILLAGE QUIZ NIGHT!



Once again, we shall be hosting this popular fundraising event on

**Saturday, 9<sup>th</sup> November, at 7.00 pm.**

It will be held at Cliddesden Millennium Village Hall, for teams of up to 6 people, with all proceeds going to St. Leonard's Church, Cliddesden.

Tickets, priced £15 per person, to include a hot meal and one glass of wine, beer or a soft drink from the licensed bar, will be limited and only on sale until

**Saturday, 2<sup>nd</sup> November** - available from:

Ben Maunder (01256 327859)

and Val Gofton-Salmond

(01256 474425 or 07901 674531)



As ever, there will be 6 question rounds, plus table quizzes, and the opportunity to double your points on your favoured round using your Joker ... what's not to like?

**Hope to see you there again!**

### 100 Club



Hello members

The draw for October was called at the coffee morning held at the Village Hall on 14<sup>th</sup> October 2024. Here are the lucky winners:

1 <sup>st</sup>	Katie James	445
2 <sup>nd</sup>	Annie Tuberfield	375
3 <sup>rd</sup>	Gina Oxe	220

Congratulations.

The next Coffee Morning is on 11<sup>th</sup> November – all welcome.

Rose Beevers Tel: 475944  
[100club@cliddesdenhall.org.uk](mailto:100club@cliddesdenhall.org.uk)

## Cliddesden, Farleigh Wallop & Ellisfield Horticultural Society

### The three villages Gardening Club

Chairman: Steve Bowcutt, tel: 324707, email: [stephen.bowcut@btinternet.com](mailto:stephen.bowcut@btinternet.com)  
 Secretary: Marilyn Smith, tel: 462584, email: [willow.ms@btinternet.com](mailto:willow.ms@btinternet.com)



Hello from Claire!

And farewell. After 6yrs it is time for someone else to bring you the news and titbits for the Horticultural Society. Thank-you for reading, and hopefully enjoying all the random things that have filled the spaces.

Who will taking over? I don't know; it will be decided at the AGM. So, if you are a budding scribe, enjoying finding out about all sorts of things to do with plants, gardens and how to help them grow, come along to the AGM, wave your hand in the air and cry 'ME ME ME!!!' As with all things to do with the society, it is voluntary and it is fun.

So, for my final offering, covering November and December, let's tuck the fleece around our less hardy shrubs, pop the pots of delicacies into the greenhouse, lament about clearing the leaves (again, and again, and again), grab the planner and work out what marvels we can bring about in the Spring.

I have chosen a more unusual herb for this month, planted in knot gardens in Tudor times, and taken by the Pilgrim Fathers to America where it became naturalised. Native to the Mediterranean region, used to flavour wines and taken as a tonic tea, please bid welcome to Salad Burnett.



Botanical name:  
Poterium sanguisorba  
Family: Rosaceae

A low-growing plant, the flower stems reach only 30cm/12" high, with coarsely toothed leaflets, despite its rather delicate appearance is a hardy perennial and will remain green through milder winters.

The leaves have a mild cucumber taste, and the small round red flowers will appear for around 3 months during the summer.

Grown only from seed, plant during late Spring or early Autumn in good soil, Salad Burnett will readily self-sow if the flowers are left on. However, for a plentiful supply of leaves, remove the flowers and plant fresh each year as the young leaves are more tender.

Chop the freshly picked leaves into salads, use liberally in place of parsley, or mix with raw vegetables.

It will also add a fresh flavour to creamy sauces, egg dishes and white meats.

Make Burnett vinegar for French dressing, and mix with cream cheese for dips.

For medicinal uses make an infusion of the leaves to

drink warm to reduce fever and stimulate kidney activity.

To cleanse and refine the skin make an infusion of the leaves, or pop the leaves in a muslin bag and treat yourself to a wonderful refreshing bath.

### What's been happening?

**Thursday 26<sup>th</sup> September – Cliddesden Millenium Hall 1930 for 1945 start**

*Tim Woodland* – Planting and Growing Winter Bulbs

A return visit from Tim, this time for our winter bulbs instead of summer.

And we weren't disappointed! A well attending evening despite the weather, Tim's passion for his craft is obvious with the huge variety of bulbs he describes, and the accumulated knowledge he has about them all. Bulbs were purchased, questions answered, and hopefully everyone went home having gained something from the evening.

Thank you to everyone who came.

### What's coming up?

**Thursday 28<sup>th</sup> November – Cliddesden Millenium Hall 1930 for 1945 start**

AGM and Social Evening

The years update, food, wine, and quiz.

Need I say more 😊

Well, yes, this time I must.

The Horticultural Society exists for the benefit of everyone, young and old, novice or expert.

Whether you are like Winnie-The-Pooh with 100 acres and a wood, or just pop a few things in pots to see what will happen. Even if everything you plant turns up its roots and goes to plant heaven!

Do you have a penchant for flower arranging, cookery or handicrafts?

Or do you have children who you would like to get out in the garden more?

Come along to one of the meetings, or visit the Spring or Summer show.

Email Seumas Foster on [Seumas@cropfosters.co.uk](mailto:Seumas@cropfosters.co.uk) for full details, or have a chat with any of the committee.

The programme of meetings for next year will soon be announced – pop the dates in your diary and have an evening out with us.

Here's wishing you all a very Happy Christmas, a restful and blessed New Year, and may your gardens always bring you joy.

Thanks for putting up with me 😊

Claire



## THE 2024 CLIDDESSEN PANTOMIME

# "Camelot The Panto" by Ben Crocker



**Friday 13<sup>th</sup> & Saturday 14<sup>th</sup> December 8.00pm**  
**Saturday 1.30pm Matinee** Note new Matinee start time!

Doors open 30mins before the performance begins

Come and enjoy a traditional pantomime featuring the talented cast of the Cliddesden Players! Suitable for children and adults alike, in fact anyone with a sense of humour who is looking forward to a lot of laughs, a chance to boo and hiss at the baddies, whistle at the gorgeous Dames and enjoy a magical start to the festive season.

You will be whisked off to Camelot Castle, Merlin's laboratory, a haunted hotel and a shrieking bog – our scene changes are legendary! Meet the black-hearted Queen of the Night, Valerin the Vicious (and his Mum), Princess Guinevere, Prince Arthur, Merlin, Connie Clatterbottom the royal nurse and Teddy, a sweet natured bear, amongst a cast of ..... well, I lost count!

Will nasty Valerin manage to steal Guinevere away from Arthur? How will we know where Garlon the Invisible Knight is? Can Merlin conjure up a love potion to ensure a happy ending?

You will just have to buy a ticket to find out!

**Box Office:** Adults £10 Children (2-16) £5\*

**\* In order to maintain emergency escape compliance at all times, no mats or sitting on the floor will be allowed in front of the stage.**

**At the Matinee the front rows of seating will comprise of "children only" seats to ensure that their view of the production is not compromised. The next rows of seating shall be allocated to their accompanying adults.**

**At evening performances all children must be seated with adults.**

**Contact:** Jo Capehorn on 07528856157 or email: [events@cliddesdenhall.org.uk](mailto:events@cliddesdenhall.org.uk)

Please advise if there are mobility difficulties or if a wheelchair user.

Information on how to pay will be given when tickets are ordered. Please note that no seats can be reserved without payment.

**Note:** Licensed Premises. To limit transaction charges, we prefer to operate a CASH bar and refreshment service. So please bring some real money with you!

For your convenience, we have a card payment machine available for larger transactions.

If you can help with stage set-up the previous weekend, then please get in contact. There are lots of different jobs to do (carpentry, making props, painting, creating the sets) and a couple of hours help would be most welcome and appreciated.

## Thank You!

To our amazing St Leonard's Community for their hard work and generosity this month.

**The Harvest Festival** donations of dried food raised the equivalent of **118 meals** for the **Basingstoke Food Bank**

The cycling team raised **£100** in the **Ride and Stride** sponsored cycle for **Hampshire Historic Churches Trust**

**Farleigh Parish Playgroup** raised **£87.32** at their **MacMillan Coffee Morning** for the cancer charity.

A huge thank you to you all.

**Come and get involved, there is lots going on at your local church for all ages!**



Yes, we now have table tennis available at Coffee Mornings at Cliddesden Millennium Village Hall.

Please come along to have a natter and make new friends, browse the second-hand book stall, select some pretty stationery from Penny our stallholder, and of course enjoy a good cuppa and a slice of cake!

The 100 club is also drawn here each month, and, if you fancy, have a turn at table tennis. We have all the equipment you will need.

We meet on the second Monday morning of each month, from 10.30 – 12 noon. Our next date is 11<sup>th</sup> November 2024.

**Hope to see you there, all ages are welcome.**

**Gill (01256 359413)**







## CLIDDESSEN

At our October meeting we enjoyed a talk from Joyce Meader on the History of Knitting from the 1800s to 1945.



Joyce presented knitted garments and patterns, this included a knitted corset cover, designed to protect valuable dresses from the stays of a corset. There were finely knitted garments for women, men and children including socks, shawls with knitted lace edging jumpers, underwear, swimsuits and dresses for babies. All beautifully knitted with very fine yarn and needles.

She also explained that a ladies maid would be expected to knit new lace at night to embellish their mistress' dresses.

The members remembered wearing swimming costumes which sagged and became very revealing when wet, this was common until the 1950s.

Joyce also explained that old patterns were designed for women of the time who were much smaller and when she reproduces garments she often has to make several versions to fit the modern woman.

We also discussed plans for our Christmas meetings including the planned wreath making workshop on 30<sup>th</sup> November.



Our next meeting is on Monday 18<sup>th</sup> November, we have invited a speaker on being a boy evacuee.

If you would like to join us for a taster meeting or the wreath making workshop, please do contact me at [cliddesdenssec@hampshirewi.org.uk](mailto:cliddesdenssec@hampshirewi.org.uk). *Julia Ross*

## Cliddesden WI

Space is limited

But you don't need to be a member

£10



## Christmas Workshop

Come and join our expert to make a wreath or table decoration

**Saturday 30<sup>th</sup> November at 10am to 1pm**  
**At Cliddesden Millennium Hall**

### Bring along:

Your choice of base  
Lots of greenery (to share)  
Your choice of added decorations  
Scissors & Secateurs

### We will provide

Tutor  
Refreshments

### Please email

[cliddesdenssec@hampshirewi.org.uk](mailto:cliddesdenssec@hampshirewi.org.uk)

## RAISING MONEY FOR CLIDDESSEN MILLENNIUM HALL

## Christmas Fayre



MANY STALLS | TEA AND CAKE | GRAND RAFFLE

SUNDAY NOVEMBER 24<sup>TH</sup>  
**11AM-3PM**

CLIDDESSEN MILLENNIUM HALL  
**FREE ENTRY**

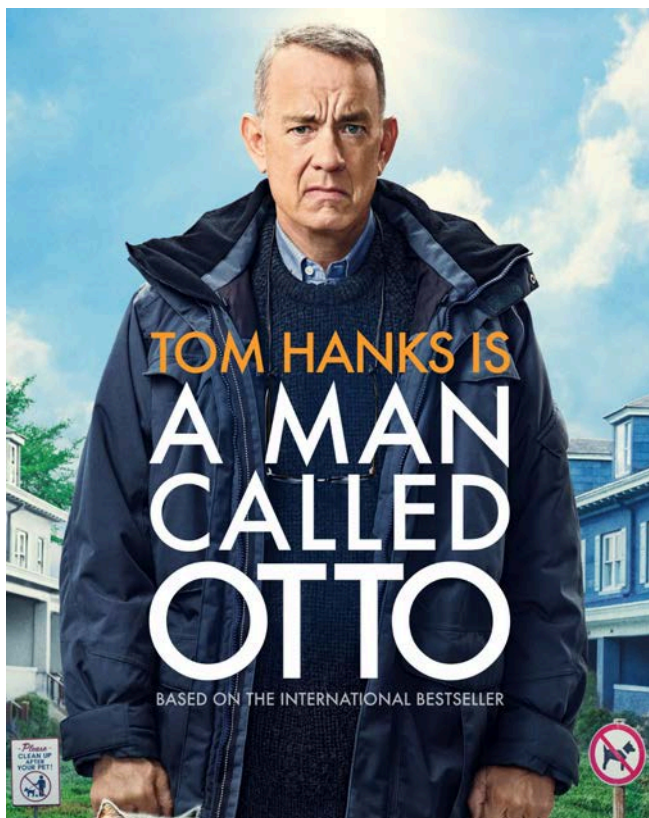
TO BOOK A STALL, PLEASE CONTACT  
ALISON HOOD ON 07919 418551

## Social and Entertainment Club

### Cliddesden Millennium Village Hall

*'You'll be sure of a warm welcome and a great evening'*

The bar opens at 7.30pm and we start at 8pm. There is an intermission half way through during which ice creams and the bar are available. Admission is only £2 per person.



Thursday 7<sup>th</sup> November  
**A Man Called Otto**  
 2022, 126 minutes  
 Certificate 15

**A Man Called Otto** is a 2022 American comedy-drama film directed by Marc Forster starring Tom Hanks.

It is a remake of the 2015 Swedish film *A Man Called Ove*.

The film stars Tom Hanks in the title role.

**Paddington 2** stars Hugh Bonneville, Sally Hawkins, Brendan Gleeson, Julie Walters.



Thursday 5<sup>th</sup> December  
**Paddington 2**  
 2017, 104 minutes  
 Certificate PG

Directed by Paul King and written by King and Simon Farnaby. It is based on the stories of the character Paddington Bear, created by Michael Bond. It is the sequel to the 2014 movie *Paddington* and has equally glowing reviews.

Please come along no matter where you live, bring as many friends and neighbours as you like. Hope to see you there.

*Ted Dowson*

*edward.dowson@btinternet.com*

**SERVICE TIMES  
 AT  
 ST. LEONARD'S  
 CLIDDESSEN**

**SUN 3<sup>RD</sup> NOV**

**9.45AM**

**MORNING PRAYER**

**SUN 10<sup>TH</sup> NOV**

**10.30AM**

**FAMILY REMEMBRANCE  
 SERVICE**

**SUN 17<sup>TH</sup> NOV**

**11.15AM**

**FAMILY SERVICE**





### NEXT PARISH COUNCIL MEETING

Tues 05 November, 7.30pm in the Village Hall meeting room. Everyone welcome.

## OAKDOWN FARM, DUMMER

**Warehousing application** 23/03120/FUL (Validated 19 Dec 2023)  
Land At Oakdown Farm, Winchester Road, Dummer [off Junction 7]  
Demolition of three dwellings, outbuildings and related structures and construction of storage and distribution units (use class B8) with ancillary offices and gatehouses, associated infrastructure works (including parking and landscaping), and full details of site levels, access, drainage, tree retention and diversion of underground pipeline. (Phased and delivered across separate and self-contained plots.)



There is very strong opposition to this application from local Parish Councils, local Councillors and Community Groups, plus 344 public objections.

Other statutory consultees are now presenting little outright objection: Historic Environment (Conservation) continue to express concerns; Landscape, Biodiversity, Tree officers, Urban Design, Environmental Health, Hampshire Highways, National Highways – all indicate that issues raised have been in the main addressed or can be dealt with via condition.

The application is scheduled for decision by Development Control Committee of Wednesday 06 November.



## MANYDOWN DEAL SIGNED *From BDBC News release 10568, published 21 Oct 2024*

*'A landmark deal that will kick-start work to create new communities at Manydown has been signed by Basingstoke & Deane Borough Council and Hampshire County Council'*

The Borough and County Councils took out a long lease on Manydown in 1996, with an option to purchase the freehold. They agreed to the principal terms of purchase in October 2023.

**The legal and financial documents to complete the purchase have now been signed by both Councils and the Manydown Company Ltd.**

The Councils are in partnership with Urban & Civic, a leading master developer in the UK and part of the global charitable foundation The Wellcome Trust.

Cabinet Member for Major Projects and Regeneration, Cllr Onnalee Cubitt, said: 'This is a key and exciting new development that will combine the best features from Hampshire villages and towns, with contemporary sustainable design, supported by well-planned infrastructure and facilities.'

Urban & Civic can now begin preparation works for construction access, roads and utilities.

**The site has outline planning permission** for a new community of up to 3,520 new homes, a 250-acre countryside park, two primary schools with land reserved for a potential secondary school and other mixed uses including businesses, shops and community facilities.

**17/00818/OUT** (Granted 21 December 2021) Manydown, Land off Roman Road and Worting Road.

*Residential development of approximately 3,200 homes (up to a maximum of 3,520 homes); local centres; two primary schools; land for one secondary school; open spaces including a Country Park with related ancillary facilities, Neighbourhood Parks, natural green spaces, allotments, outdoor sports facilities and associated amenities, play provision, informal open space and landscaping; indoor sports facilities; primary means of vehicular access from the surrounding highway network; a central street (The Main Street) through the Site; associated secondary means of access, parking, footpaths, cycle links and related transport facilities; provision of five permanent gypsy and traveller pitches and infrastructure works to provide drainage, utilities and associated services.*

*All matters are reserved except the primary means of vehicular access onto the A339, B3400 and Roman Road.*

The Manydown Partnership has been progressing the work needed to begin submitting the further detailed planning applications needed for the development as a whole and the initial phase of design and site access arrangements.

Preliminary site survey work started in March 2021 to better understand the site, including the precise location of utility supplies, archaeological trenching, drainage tests and further detailed ground investigations.

In April 2023, planning permission was granted for two temporary construction access junctions, a first step in supporting the permissions and access needed to start work on site.

**23/00032/FUL** and **23/00033/FUL** (Granted 09 April 2023) Creation of temporary construction accesses from Roman Way and Roman Road in connection with the Manydown development site.

For more information, please see [www.basingstoke.gov.uk/Manydown](http://www.basingstoke.gov.uk/Manydown)

## PARISH PLANNING APPLICATIONS

**24/02388/PIP** (Validated 22 October)  
Land North of Woods Lane. Application for Permission in Principle for erection of four detached single dwellings.

**24/01881/GPDMA** Bluett House. Manor Farm. (Answered 07 October) Confirmed permitted development. Prior approval not required for change of use from Class E office to three dwellinghouses within Class C3 use.

**24/01500/RET** (Pending 02 August) 21 Southlea. Retrospective change of use of studio to mixed Class C3 residential & Air BnB accommodation. (Scheduled for decision by Development Control Committee of 20 November.)

**24/01393/TDC** (Pending 24 June) Little Acre, Woods Lane. Application for Technical Details Consent for the erection of four new dwellings with associated parking, access and landscaping, in accordance with Permission in Principle 21/01591/PIP.

**24/00617/RET** (Pending 17 June) 1A Millars Cottages, Station Road. Revised parking arrangements and associated landscaping ref 20/00390/FUL (retrospective).

## PARISH PLANNING APPEALS

### Appeals dismissed

APP/H1705/W/24/3337500 (Dismissed 25 October) The Jolly Farmer. Erection of new four-bedroom dwelling.

APP/H1705/W/23/3333310 (Dismissed 25 October) Land South of Myhaven. Erection of 28 new dwellings following demolition of Newland Lodge.

### Appeal in progress

APP/H1705/W/24/3350216 Greenlands Nursery. New dwelling to replace storage /workshop.

## PARISH TREE APPLICATIONS

**T/00527/24/TPO** (Validated 22 Oct) Station House. T1 Large Chestnut tree: over-hanging road side: fell. T2 Medium sized Chestnut tree: fell.

**T/00424/24/TCA** (Approve 10 October) Hill View, Farleigh Road. T1 Conifer: Reduce branches overhanging garden back from garden by approx 3m. T2 Sycamore: Raise canopy over roof to clear back from roof by approx 3m.

## LOCAL PLAN UPDATE

[www.basingstoke.gov.uk/LDS](http://www.basingstoke.gov.uk/LDS)

'September 2024 update...

Government's recent consultation on draft changes to the National Planning Policy Framework (NPPF) could have a considerable impact on the borough, including a significant increase in the housing need figure, if the NPPF is published as per the consultation version. The Council is considering the potential impact of the changes upon the plan-making process and an update position will be published here once the new NPPF has been published.'



## HEDGES FOR WILDLIFE

The RSPB recommends late winter cuts for berry bearing hedgerows in order to allow wildlife to consume what is a vital food resource for them. Also... rather than cut all sides of the hedge each year, cutting on a rotation scheme to suit the hedge in question is a much preferred option

for wildlife as it provides a richer crop of fruit which helps them through the autumn and winter and provide better nesting habitat.

The RSPB book *Gardening for Wildlife* (Adrian Thomas) says: 'Many hedges, bushes and trees will be harbouring insects and their eggs throughout the winter, or will bear all kinds of fruit. These can mean the difference between life and death for many resident birds and winter visitors.'

'Even some berries like Firethorn, which are less popular with the birds, will be used as late as February, once the more sought-after berries have been taken. If you can wait until late winter to do the pruning, when plants are dormant anyway, you can give your garden wildlife the best chance at making the most of all that good food before things start coming to life again in the spring.'

See also [www.rspb.org.uk/birds-and-wildlife/advice/gardening-for-wildlife/](http://www.rspb.org.uk/birds-and-wildlife/advice/gardening-for-wildlife/)



Why is leaf litter so important for wildlife?

PHOTO from the Wildlife Trust website

**FALLEN LEAVES** – The epitome of autumn – carpets of colour underfoot and maybe the precursor for hours spent raking and clearing. If left to itself leaf litter provides warm, safe places to shelter from the elements, supporting a whole range of species, as diverse as butterflies, toads, maybe frogs – and hedgehogs – through the winter.

Hedgehogs use leaf litter to build their nests. They will spend the winter hibernating, surviving off their fat reserves. A few quiet spots in the garden for leaves and log piles can help nature support itself. Birds such as robins and sparrows will be encouraged to visit to forage for worms and bugs in the leaf layer. The RSPB says that: 'where you put the logs and leaves will affect the wildlife that uses it. Try different spots in your garden, with different sized and shaped piles.'

On hedgehog boxes, the Wildlife Trust says they 'can help increase suitable nesting spaces, but natural is always best' and 'research has shown that homemade boxes are preferred by hedgehogs to shop-bought ones' and 'if you do have a hedgehog box in your garden ensure you are providing suitable bedding, ideally fallen leaves'.

**By Common Law**, fallen leaves belong to whoever owns the land they fall on... It is unlawful to 'return' fallen leaves to someone else's land without their permission, including Highway land. It is unlawful to blow leaves from private land onto the Highway.

## HAMPSHIRE COUNTY COUNCIL – Reporting Highway problems

[www.hants.gov.uk/transport/roadmaintenance/roadproblems/potholes](http://www.hants.gov.uk/transport/roadmaintenance/roadproblems/potholes)  
[www.hants.gov.uk/transport/roadmaintenance/roadproblems/treehedge](http://www.hants.gov.uk/transport/roadmaintenance/roadproblems/treehedge)  
[www.hants.gov.uk/transport/roadmaintenance/roadproblems/flooding](http://www.hants.gov.uk/transport/roadmaintenance/roadproblems/flooding)  
[www.hants.gov.uk/transport/roadmaintenance/roadproblems/paving](http://www.hants.gov.uk/transport/roadmaintenance/roadproblems/paving)  
[www.hants.gov.uk/landplanningandenvironment/rightsofway/reportaproblem](http://www.hants.gov.uk/landplanningandenvironment/rightsofway/reportaproblem)

On reporting an issue, you'll receive a confirmation email with a reference number. If you wouldn't mind also forwarding this to the Parish Council, it would help keep us in the loop, and we can follow up (via County Cllr Juliet Henderson) where that might help. [clerk.cliddesden@gmail.com](mailto:clerk.cliddesden@gmail.com)



# Cliddesden Primary School



It was so lovely to see the children again at the start of September and to welcome our new foundation stage children and parents.



Congratulations to Kian, Joseph, Charlotte and Elsie in Year 6 who are our new Junior Leadership Team. They were selected after a written application and interview and competition was high. The duties of our Junior Leadership Team are to be ambassadors for the school, to be good role models to others and to support the Headteacher in school procedures where appropriate.

Some of our other Year 6 roles of responsibility in school are:

Our House Captains who have the responsibility to tally up house points each week and present in our weekly achievement assembly. With their house staff member they hold house assemblies once a half term. They also lead their houses in intra-school sports events including our annual sports day.



Our Year 6 Sports Leaders this year are Joseph, Charlotte, Kian, Taylor, Sarah and James. They all now have their special sports leader tops and they have been taking turns helping our specialist PE teacher, Debs, in Friday PE lessons giving the younger children support with their lessons.



You may, on a couple of occasions, have seen children from Cliddesden around the village.



In September, our Year 6 children took part in Bikeability. This is a cycling proficiency course that we book every year. The children began by cycling in the playground where they learned how to check that their bikes are safe and how to stop, practice how to look for traffic and the rules of the road. They then

progressed onto the roads in the village and learned how to ride safely, who has priority at junctions and on the road and what the different road signs and markings mean. The sun shone all week and the children thoroughly enjoyed their time outside and learning how to be proficient cyclists.



At the beginning of October, Year 1 and Year 2 ventured through the village as part of their Geography learning adventure.

Along the way, they paused to observe and discuss the human and physical features around them, noticing things like houses, a church, roads, lanes, fields and a pond. They also thought about the village's history, considering why certain things have changed over the years and how these changes have shaped the village today.



For our Harvest Sale, we collected 79kg of tinned and packet foods which were delivered to Basingstoke Food bank. In our cake, bread, fruit and vegetable sale we raised a fantastic amount of £170 that we will send to Children in Need.



Our Year 6 helpers were amazing helping to set up and price the goods. Year 5 children supported our youngest children with their purchases.

This is a great opportunity for the children to learn some independence by



choosing and paying for their goods.  
Everyone thoroughly enjoyed the sale.

To find out more about our school  
please visit the school website:  
[Cliddesden.hants.sch.uk](http://Cliddesden.hants.sch.uk)

Paula Lavender



## Farleigh Parish Playgroup



Cliddesden Millennium Village Hall

Friday Mornings 11am-12noon Term Time

8<sup>th</sup>, 15<sup>th</sup>, 22<sup>nd</sup> and 29<sup>th</sup> November  
6<sup>th</sup> and 13<sup>th</sup> December (Our Christmas party with a visit from FC)

0 - 4 year old and their grown-ups. A warm welcome awaits  
you and we look forward to you joining us for a fun and  
happy time

Cost: £3 donation per family

Contact:

**Melanie** Qualified in early years (07833 528040)

**Claire** Qualified teacher (07757 498653)



## CHILDREN'S SINGING GROUP



Join the fun!

Come along, meet new friends,  
and learn new songs

We meet every Friday during term time  
3.45pm snack, 4-4.30pm singing

We are now learning **CHRISTMAS SONGS!**

**ST LEONARD'S CHURCH, CLIDDESSEN**



## Family Remembrance Service

Sunday 10th November

10.30am at St Leonard's Church, Cliddesden

All ages welcome





## Camrose, Gilles, Hackwood & Beggarwood News from the Patient Participation Group

Website: <https://cghppg.weebly.com> Email: [cghb.surgeryppg@btinternet.com](mailto:cghb.surgeryppg@btinternet.com)

At the last meeting with the surgery, it was reported that three new salaried GPs were due to start, a receptionist is due to start in November and two started in September. The practice was almost at full complement for doctors, about 4 weekly sessions away (60 appointments). Adverts were out for a practice nurse, a receptionist, a care co-ordinator and two admin people. The practice has two Social Prescribers with one being based at Beggarwood. There have been two internal changes; Dr. Sarah Longley is now managing the Clinical Leads team and there is a new nurse lead for St. Andrews and Essex House. The practice had their bid for Covid and Flu vaccinations accepted, and they will take place for the whole of October. Eighteen women had attended a recent Menopause Evening led by Dr. Scammell.

At our next meeting with the practice, we intend to focus on appointment and telephone wait times which have not improved despite the new GPs. **We know the surgery is working hard to improve on both these areas but so that we can gauge your reactions and fully represent your views about this sensitive topic, we'd like to invite you to tell us your views (good and bad) via our email address above. We will plan to report back to you in our next Newsletter on the outcome of the meeting.**

### Health Focus

#### Flu and Covid Vaccinations

For those eligible, you should be able to book your Covid/Flu vaccinations with a vaccination centre of your choosing either via the surgery's invitation message or via the NHS App.

#### Feeling vulnerable because of Health issues or worried about the cost of living?

People's needs change at different times of their lives. Please don't feel you are alone if you need support. Our Patient Group has put together a list of Help, Benefits, Support and More at [cghppg.weebly.com/cost-of-living-support.html](https://cghppg.weebly.com/cost-of-living-support.html)

- Basingstoke and Deane Borough Council have a new **Cost of Living Assistance** Fund for households on low income. Please apply as soon as possible. [basingstoke.gov.uk/colaf](https://basingstoke.gov.uk/colaf)
- **Vulnerability Registration Service** Register today at [vrshhs.org](https://vrshhs.org) select "call back" and choose a date and time for the Healthy Homes team to call you back at your convenience or Call 0800 151 3014 – They will listen, and register you for the relevant additional services such as Financial aid, the Priority Services Register, and support for maintaining safe, warm, and independent living. The service also covers broadband social tariffs, water-saving kits, eligibility for extra DWP benefits, home improvement grants for improved heating, and information on support for mental health, cancer, Alzheimer's, and gambling.
- Also don't forget the Basingstoke Citizens Advice Bureau [cabasingstoke.org.uk](https://cabasingstoke.org.uk) Phone 0808 2 787829, Monday to Friday, 9.00am - 5.00pm or call Relay UK if you can't hear or speak on the phone you can type what you want to say: 18001 then 0800 240 4420.

### Veterans

If you are a veteran, tell your GP surgery as soon as possible. They will record it in your medical records. This means you are more likely to receive specialist veteran care and consideration in the future, including referrals to specialist veteran health services if needed. The Patient Participation Group (PPG) has information for veterans [cghppg.weebly.com/veterans](https://cghppg.weebly.com/veterans) and the practice is running an event for veterans.

#### Veterans Afternoon

**Saturday 16th November 2024 from 2pm to 4pm**  
**St Andrews Centre Hall, Western Way**  
**South Ham, Basingstoke**

### End of Life and Palliative Care and St Michaels Hospice

The PPG has general information about End Of Life care on our Web Site here [cghppg.weebly.com/end-of-life-care](https://cghppg.weebly.com/end-of-life-care) but we'd like to highlight the work of your local Hospice in this newsletter.

St. Michael's Hospice is an independent charity based in Basingstoke, supporting people across North Hampshire who have a life-limiting illness, are facing the end-of-life or experiencing bereavement. They opened their doors in 1992 and serve a population of 300,000 across North Hampshire. St. Michael's Hospice's dedicated team of nurses, doctors, and therapists deliver free, high quality, compassionate end-of-life care and support to patients, their families and carers on its In-patient unit and in the community through its Hospice at Home team.

As well as nurses and specialty doctors, St. Michael's provides physiotherapy, occupational therapy, family support and complementary therapy.

Curious about what St. Michael's Hospice is like? Whether you're using the services or just want to learn more, you can take the virtual tour here:

[stmichaelsospice.org.uk/about-us/our-hospice/virtual-tour](https://stmichaelsospice.org.uk/about-us/our-hospice/virtual-tour)

Only 16% of the Hospice funding comes from the government, the rest is raised thanks to the generosity and kindness of our community. They provide essential end-of-life care but they need your help to keep services running. With costs rising, they are facing a £600,000 shortfall this year. Every contribution, big or small, brings the Hospice closer to closing the funding gap. You can donate to the Urgent Care appeal here:

[stmichaelsospice.org.uk/get-involved/support-us/urgent-care-appeal](https://stmichaelsospice.org.uk/get-involved/support-us/urgent-care-appeal)

### Comments, Feedback & Complaints

The surgery welcomes feedback from patients. *If you do have reason to complain about a service or anything related to the surgery this matter is completely confidential. It will not impact your relationship with the surgery.* For CGHB complaints, please visit the CGHB web site to register your dissatisfaction. The web address is :-

[cghpartnership.co.uk/about-us/comments-and-complaints](https://cghpartnership.co.uk/about-us/comments-and-complaints)

CGHB employ a full time Patient Experience Manager and so you should get a speedy response and certainly an acknowledgement within 3 working days. If you are not satisfied with the way they have dealt with your complaint, you can contact the Parliamentary and Health Service Ombudsman to review your case on 0345 015 4033 or via their website: [www.ombudsman.org.uk](https://www.ombudsman.org.uk).



# VILLAGE DIRECTORY

<b>POLICE</b>	PCSO Andy Jones (Basingstoke Rural South) <i>andrew.jones.13301@hampshire.pnn.police.uk</i>	07775 542 021
<b>NEIGHBOURHOOD WATCH</b>	Simon Barker <i>sibarksy@hotmail.com</i>	07732 100 990
<b>PARISH COUNCIL</b>	<i>www.cliddesdenparishcouncil.info</i> Susan Turner (clerk) <i>clerk.cliddesden@gmail.com</i> Alan Tyler (chairman) <i>alanbtyler19@btinternet.com</i> Bob Randall <i>rarandall9@aol.com</i> Mark Gifford <i>m.gifford1@outlook.com</i> Alison Mosson <i>alison@abe.co.uk</i> Dave Rudge <i>hugh.rudge@gmail.com</i>	07515 777 060 460 425 359 579 07504 104 621 07721 046 146 07813 070 261
<b>TREE WARDEN</b>	Alison Mosson <i>alison@abe.co.uk</i>	07721 046 146
<b>WARD COUNCILLORS</b>	Onnalee Cubitt <i>cllr.onnalee.cubitt@basingstoke.gov.uk</i> Kate Tuck <i>cllr.kate.tuck@basingstoke.gov.uk</i> Sheena Grassi <i>cllr.sheena.grassi@basingstoke.gov.uk</i>	07762 067 411 07762 067 411 07561 060 596
<b>COUNTY COUNCILLOR MEMBER OF PARLIAMENT</b>	Juliet Henderson <i>juliet.henderson@hants.gov.uk</i> Alex Brewer MP <i>alex.brewer.mp@parliament.uk</i> House of Commons, London SW1 AOM	07738 289 849
<b>MILLENNIUM VILLAGE HALL</b>	<i>www.cliddesdenhall.org.uk</i> Leslie Smith (Chairman) 3 <sup>rd</sup> alarm contact Angie Fewster (Vice Chair) 2 <sup>nd</sup> alarm contact Ken Rampton (Caretaker) 1 <sup>st</sup> contact if alarm goes off Pat Rampton (Lettings Secretary) <i>bookings@cliddesdenhall.org.uk</i> Jo Capehorn (Secretary) Julie James (Treasurer)	07973 922 560 475 848 461 034 461 034 07528 856 157 363 753
<b>NEIGHBOURHOOD PLAN</b>	<i>cliddesdennp.wixsite.com/cliddesdennp</i>	
<b>CLIDDESSEN COMMUNITY CONSERVATION GROUP</b>	<i>cliddesdenconservation.org</i> Alison Mosson (Chairman) <i>alison@abe.co.uk</i> Angie Fewster (Secretary) <i>angie@fewster.me.uk</i>	07721 046 146 475 848
<b>JOLLY FARMER</b>	<i>thejollyfarmercliddesden.co.uk</i> <i>theJollythai@gmail.com</i>	358 288
<b>CLIDDESSEN PRIMARY SCHOOL</b>	<i>www.cliddesden.hants.sch.uk</i> Kenneth Davies (Headteacher)	321 571
<b>BROWNIES</b>	Sian Banks	333 151
<b>FARLEIGH PLAYGROUP</b>	Claire Nunn Melanie Gill	477 197 07833 528 040
<b>ST LEONARD'S DISTRICT CHURCH COUNCIL</b>	<i>www.farleighcandoverandwield.org.uk</i> Rectory: Vacancy Peter Raine (Church Warden) <i>peter.c.w.raine@btinternet.com</i> Val Gofton-Salmond Julian Nunn	381 221 474 425 477 197
<b>FILM CLUB</b>	Ted Dowson <i>edward.dowson@btinternet.com</i>	817 238
<b>HORTICULTURAL SOCIETY</b>	<i>www.ellisfield.org.uk/hortsoc.html</i> Marilyn Smith	462 584
<b>WOMEN'S INSTITUTE</b>	Janet Fagg (President) <i>jkfagg@gmail.com</i> Pat Rampton (Vice President) Julia Ross (Secretary) <i>jrsidhat@gmail.com</i>	461 034
<b>CLIDDESSEN &amp; FARLEIGH WALLOP EDUCATIONAL TRUST</b>	Vicky Tibble (Secretary & Treasurer) <i>Vicky.tibble@outlook.com</i> By text to: <i>admin@portsmouthstates.co.uk</i>	07552 927 692
<b>AGE CONCERN</b>	The Orchard, White Hart Lane, Basingstoke RG21 4AF <i>reception@ageconcernbasingstoke.freemove.co.uk</i>	423 874
<b>B/STOKE ASTRONOMICAL SOC</b>	<i>www.basingstokeas.org.uk</i>	
<b>HILL &amp; DALE</b>	Jean Frost (Editor) <i>hillanddaleeditor@gmail.com</i> Ben Maunder (Distributor)	327 859
<b>VILLAGE ARCHIVE</b>	<i>www.cliddesden-archive.uk</i> David Brown <i>dave@cliddesden-archive.uk</i>	
<b>VILLAGE NEWSLETTER</b>	Editor: David Brown Copy date 20th preceding month to: <i>bootofthedailybeast@gmail.com</i>	
<b>CLIDDESSEN CHAT</b>	<i>www.facebook.com/groups/cliddesdenchat</i>	

The  
Cliddesden  
Players  
present

# Camelot

## the party

by Ben Crocker

Adults  
**£10**  
Children (2-16)  
**£5**

Cliddesden Village Hall

Friday 13th & Saturday  
14th December 8pm

Saturday Matinee 1.30pm

*Licensed premises/Cash bar & refreshments*

Contact: Jo Capehorn on **07528 856157**  
or email **events@cliddesdenhall.org.uk**

